

BURNS ESTATES

State of Alabama
County of Etowah

I, Robert L. Roberts, a registered Civil Engineer and Land Surveyor of Etowah, Alabama, hereby certify that I made a survey of the lands embraced within the foregoing plat, said lands being a portion of the SW part south of the river of Section 34, T 12 S, R 6 E, part of the NW 1/4, Sect. 3, T 13 S, R 6 E and Fraction 40th of Section 5, T 13 S, R 6 E, in Etowah County, Alabama, that the foregoing is a true and correct representation of said survey.

This the 1st day of July, 1971.

Scale: 1" = 100'

Note: Iron pins mark all corners.

We, the undersigned, Hubert Burns and wife, Frances L. Burns, and Burdette B. Coombs, a widow, being owners of the land embraced within the foregoing plat, do hereby ratify, confirm and adopt the same as being true and correct.

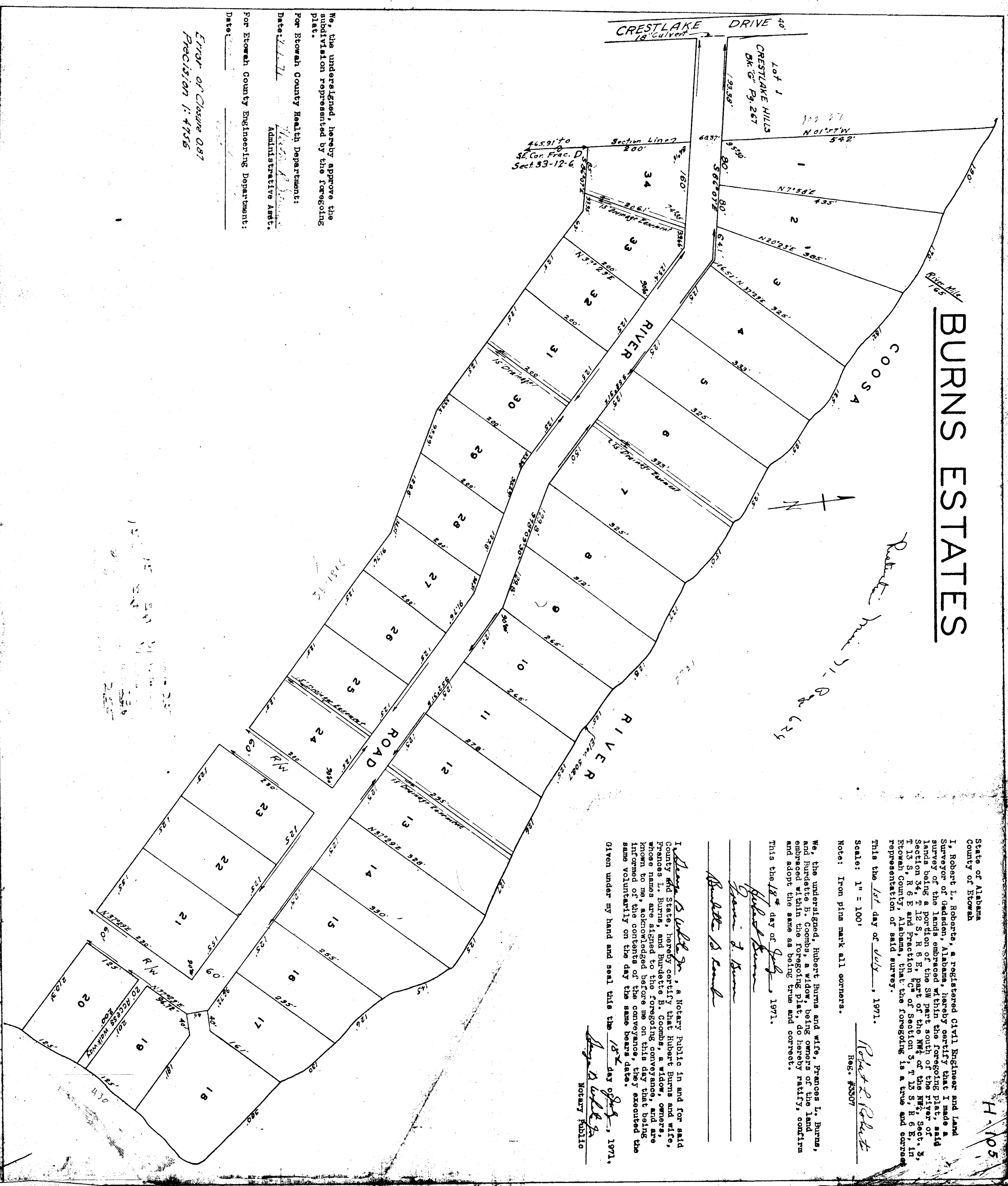
This the 12th day of July, 1971.

Hubert Burns
Frances L. Burns
Burdette B. Coombs

I, *George S. Walker, Jr.*, a Notary Public in and for said County and State, hereby certify that Hubert Burns and wife, Frances L. Burns, and Burdette B. Coombs, a widow, owners, whose names are signed to the foregoing conveyance, had in known to me, acknowledged before me on this day that the informed of the contents of the conveyance, they executed the same voluntarily on the day the same bears date.

Given under my hand and seal this the 12th day of July, 1971.

George S. Walker, Jr.
Notary Public



We, the undersigned, hereby approve the subdivision represented by the foregoing plat.

For Etowah County Health Department:
Date: 7/12/71
Administrative Asst.

For Etowah County Engineering Department:
Date: _____
Precision 1:4755