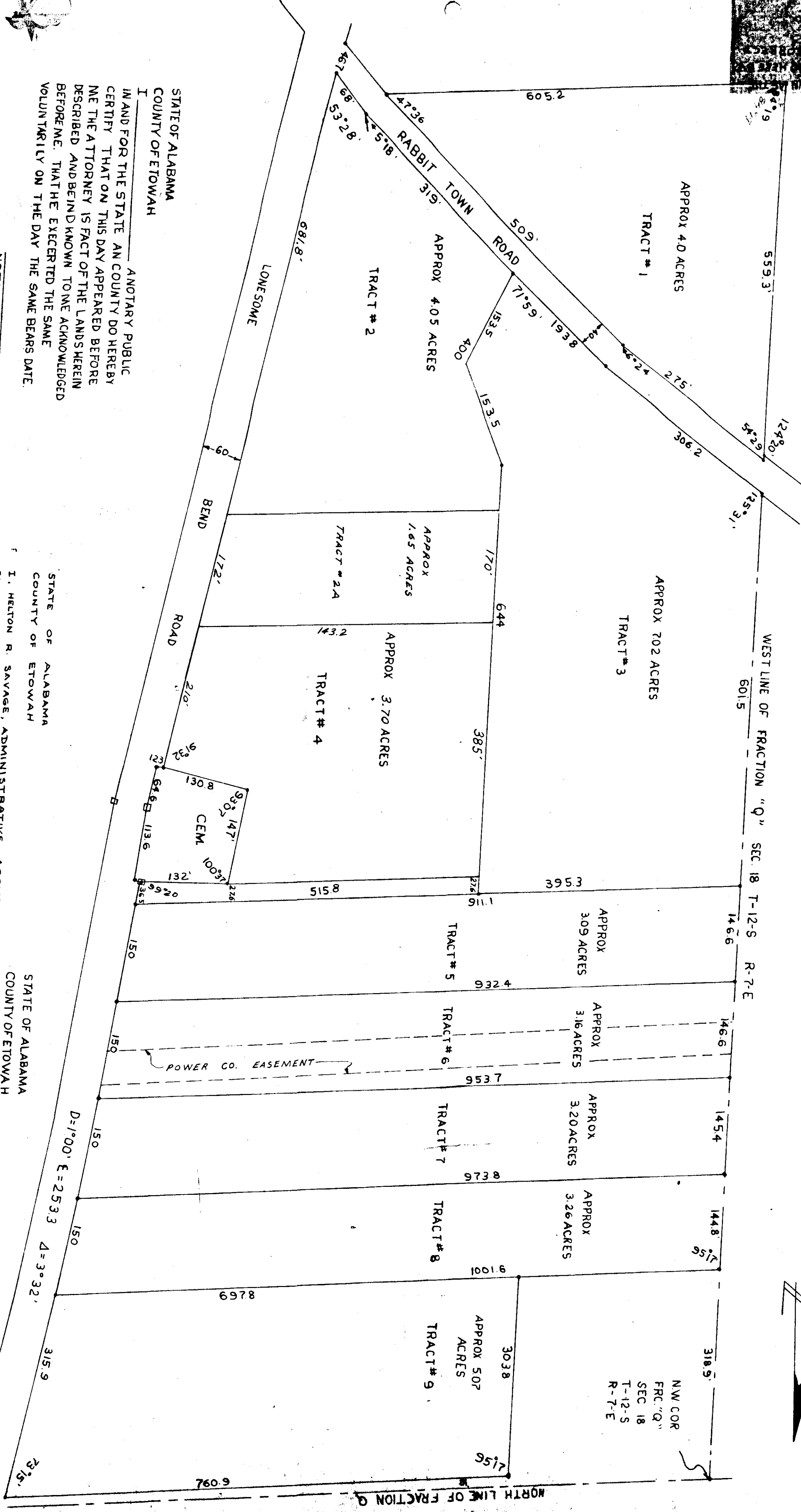


JOHN N WILLIAMS
 JOHN N WILLIAMS SR
 JOHN N WILLIAMS JR
 JOHN N WILLIAMS III
 JOHN N WILLIAMS IV
 JOHN N WILLIAMS V
 JOHN N WILLIAMS VI
 JOHN N WILLIAMS VII
 JOHN N WILLIAMS VIII
 JOHN N WILLIAMS IX
 JOHN N WILLIAMS X
 JOHN N WILLIAMS XI
 JOHN N WILLIAMS XII
 JOHN N WILLIAMS XIII
 JOHN N WILLIAMS XIV
 JOHN N WILLIAMS XV
 JOHN N WILLIAMS XVI
 JOHN N WILLIAMS XVII
 JOHN N WILLIAMS XVIII
 JOHN N WILLIAMS XIX
 JOHN N WILLIAMS XX
 JOHN N WILLIAMS XXI
 JOHN N WILLIAMS XXII
 JOHN N WILLIAMS XXIII
 JOHN N WILLIAMS XXIV
 JOHN N WILLIAMS XXV
 JOHN N WILLIAMS XXVI
 JOHN N WILLIAMS XXVII
 JOHN N WILLIAMS XXVIII
 JOHN N WILLIAMS XXIX
 JOHN N WILLIAMS XXX

SUB-DIVISION OF THE JOHN N WILLIAMS ESTATE

FOR CORRECTION OF ERROR TRACT 2-A
SEE MISC. 86 PAGE 59

1-1-78



STATE OF ALABAMA
COUNTY OF ETOWAH

I, ANOTARY PUBLIC
IN AND FOR THE STATE AN COUNTY DO HEREBY
CERTIFY THAT ON THIS DAY APPEARED BEFORE
ME THE ATTORNEY IS FACT OF THE LANDS HEREIN
DESCRIBED AND BEING KNOWN TO ME ACKNOWLEDGED
BEFOREME THAT HE EXERCISED THE SAME
VOLUNTARILY ON THE DAY THE SAME BEARS DATE

NOTARY PUBLIC

STATE OF ALABAMA
COUNTY OF ETOWAH

I, HELTON R. SAVAGE, ADMINISTRATIVE ASSISTANT,
ETOWAH COUNTY HEALTH DEPARTMENT, HEREBY APPROVE
THIS SUBDIVISION FOR INSTALLATION OF INDIVIDUAL
SEPTIC TANKS.

HELTON R. SAVAGE
ADMINISTRATIVE ASSISTANT
ETOWAH COUNTY HEALTH DEPARTMENT

STATE OF ALABAMA
COUNTY OF ETOWAH

I, W. DEAN AKIN, A REGISTERED SURVEYOR OF ALABAMA,
HEREBY CERTIFY THAT THIS IS A TRUE AND CORRECT MAP
OR PLAN OF THE LANDS CONTAINED HEREIN AS
SURVEYED BY ME
THIS THE 7TH DAY OF DECEMBER 1970

SCALE 1"=100'

REG# 8762