

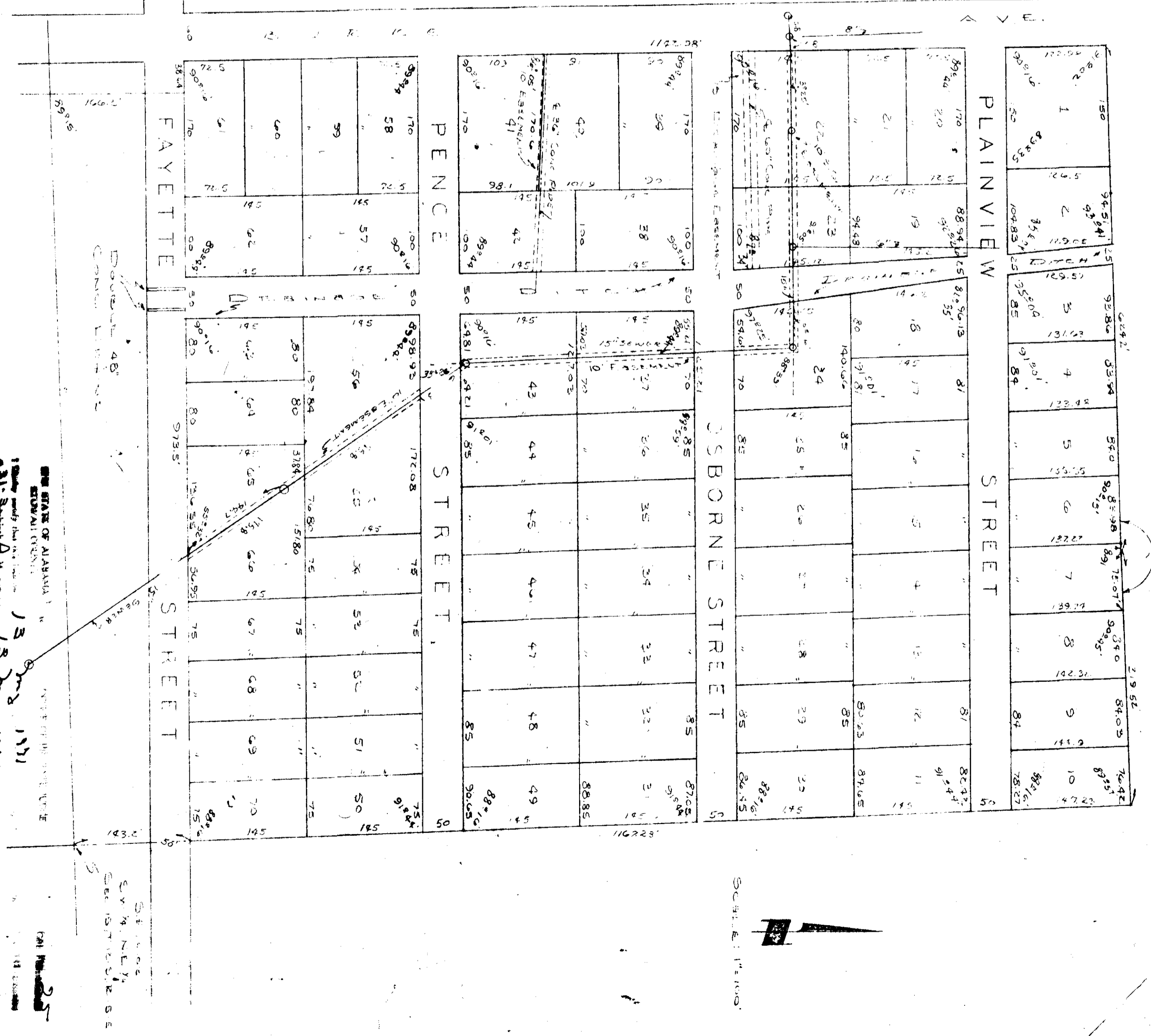
# PLAINVIEW VILLAGE

STATE OF ALABAMA  
 COUNTY OF ETOWAH:  
 I, JOEL V. OSBORN, BETTY JO OSBORN, HERBERT E. PENCE, SUE B. PENCE,  
 EMORY C. OSBORN, VIRGINIA B. OSBORN, HERBERT E. PENCE, SUE B. PENCE,  
 HEREBY RATIFY AND ADOPT THE WITHIN MAP AS BEING TRUE AND CORRECT,  
 THIS THE 16th DAY OF NOVEMBER 1970.

BY: JOEL V. OSBORN APPROVED: PLANNING COMMISSION  
 CITY OF ATLANTA  
 BY: BETTY JO OSBORN APPROVED: W. B. WILKINS, JR.  
 CITY OF ATLANTA  
 BY: HERBERT E. PENCE APPROVED: W. B. WILKINS, JR.  
 CITY OF ATLANTA  
 BY: SUE B. PENCE APPROVED: W. B. WILKINS, JR.  
 CITY OF ATLANTA  
 BY: EMORY C. OSBORN APPROVED: HEALTH DEPT.  
 BY: VIRGINIA B. OSBORN

STATE OF ALABAMA  
 COUNTY OF ETOWAH:

I, JAMES T. JONES, A REGISTERED ENGINEER AND LAND SURVEYOR  
 OF GADSDEN, ALA., HEREBY CERTIFY THAT THE FOREGOING IS A TRUE  
 AND CORRECT MAP OR PLAN OF THE LAND HEREIN SHOWN,  
 ACCORDING TO MY SURVEY THIS THE 16th DAY OF NOVEMBER 1970.  
 JAMES T. JONES, ALABAMA REG. # 2261  
 TROY E. WATFORD & ASSOCIATES, INC.



STATE OF ALABAMA  
 COUNTY OF ETOWAH:

I, JAMES T. JONES, A NOTARY PUBLIC IN AND FOR SAID  
 COUNTY AND STATE, HEREBY CERTIFY THAT JOEL V. OSBORN, BETTY  
 JO OSBORN, HERBERT E. PENCE, SUE B. PENCE, EMORY C. OSBORN, VIRGINIA B. OSBORN,  
 AND WHO ARE KNOWN TO ME, ACKNOWLEDGED BEFORE ME ON THIS DATE, THAT, BEING INFORMED  
 OF THE CONTENTS, THEY EXECUTED THE SAME VOLUNTARILY, ON THE DAY  
 THE SAME BEARS DATE.  
 WITNESS MY HAND AND SEAL THIS THE 16th DAY OF NOVEMBER 1970.

MY COMMISSION EXPIRES 11/15/71  
 NOTARY PUBLIC  
 JAMES T. JONES  
 1302 1st St. S.E.  
 GADSDEN, ALA. 36033

H-97