

STATE OF ALABAMA:
COUNTY OF STONEMAN:

I, THE UNDERSIGNED, HEREBY APPROVE THE
SUBDIVISION REPRESENTED BY THE FORE-
GOING PLAT, WITH THE EXCEPTIONS AS NOTED
IF ANY.

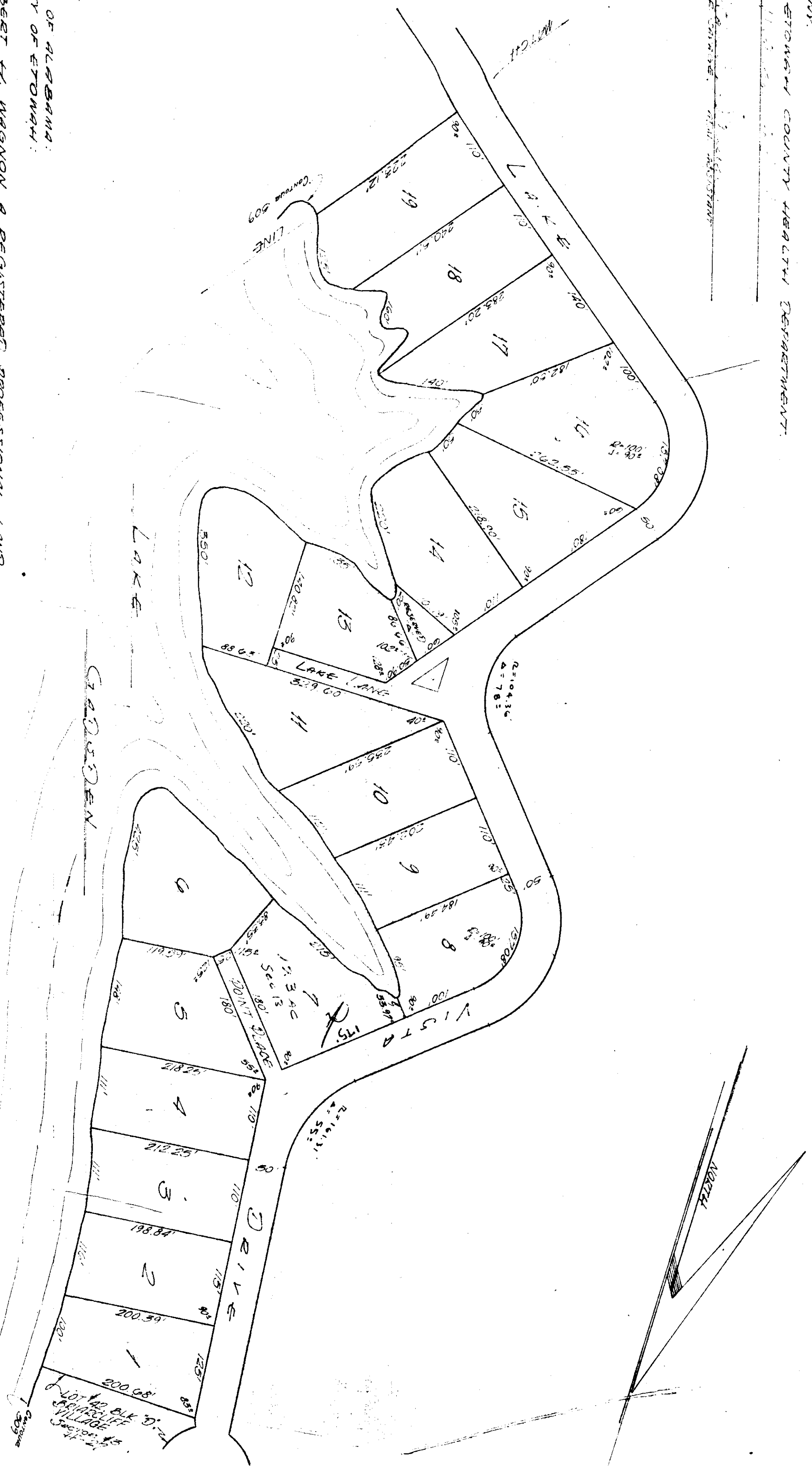
FOR STONEMAN COUNTY HEALTH DEPARTMENT.

DATE _____

SECTION 2, T. 15 N., R. 5 E., S. 1 W., STONEMAN COUNTY, ALABAMA.

LAKE VISTA ESTATES

UNIT ONE

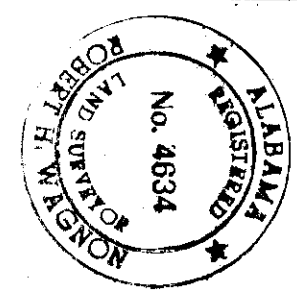


STATE OF ALABAMA:
COUNTY OF STONEMAN:

I, ROBERT H. WAGON, A REGISTERED PROFESSIONAL LAND
SURVEYOR OF GADSDEN ALABAMA, HEREBY CERTIFY THAT
THE FOREGOING PLAT IS A TRUE AND CORRECT REPRE-
SENTATION OF SURVEY AND SUBDIVISION OF PORTIONS
OF SECTIONS C & D, WEST OF COOSA RIVER, IN
SECTION 15, T. 15-S., R. 5-E., AND PORTIONS OF SECTIONAL
NORTH 1/2, WEST OF COOSA RIVER, IN SECTION 24,
T. 15-S., R. 5-E., ALL IN STONEMAN COUNTY, ALABAMA,
AS EXECUTED BY ME ON THIS THE 19TH DAY OF
MARCH, 1971.

Robert H. Wagon
REGISTERED LAND SURVEYOR No. 71033

DATE: 3/19/71
BY: RHW
FOR: Lake Vista Estates
SUBDIVISION OF PORTIONS OF SECTIONS C & D, WEST OF COOSA RIVER, IN SECTION 15, T. 15-S., R. 5-E., AND PORTIONS OF SECTIONAL NORTH 1/2, WEST OF COOSA RIVER, IN SECTION 24, T. 15-S., R. 5-E., ALL IN STONEMAN COUNTY, ALABAMA, AS EXECUTED BY ME ON THIS THE 19TH DAY OF MARCH, 1971.



ROWHEAD ASSOCIATES
SURVEYORS & LAND PLANNING CONSULTANTS
418 BOWEN THIRD FLOOR
GADSDEN, ALABAMA 36040

DATE: MARCH 19, 1971
SCALE: 1" = 100'
SURVEY BY: ROBERT H. WAGON
DRAWN BY: W. G. W.