



State of Alabama
 Etowah County
 I, W. H. Smith, Registered Land Surveyor, hereby certify that the plat shown herein is true and correct as to distances, bearings, and relation to Original Government Survey. This according to my survey of April 22, 1923.

Etowah County, Alabama
 We, the Etowah County Health Department, approve the plat of map of this subdivision as shown herein. This the 24th day of April, 1923.

Signed W. H. Smith
 (Seal)

State of Alabama
 Etowah County
 We, the owners of the lands embraced in the Conveyance of the lots in the plat of map herein do hereby adopt, ratify, and do dedicate to the public use the roads as shown on the plat of map herein, that the same is true and correct to the best of our knowledge. This the 24th day of April, 1923.

Signed W. H. Smith and wife
John H. Smith and wife

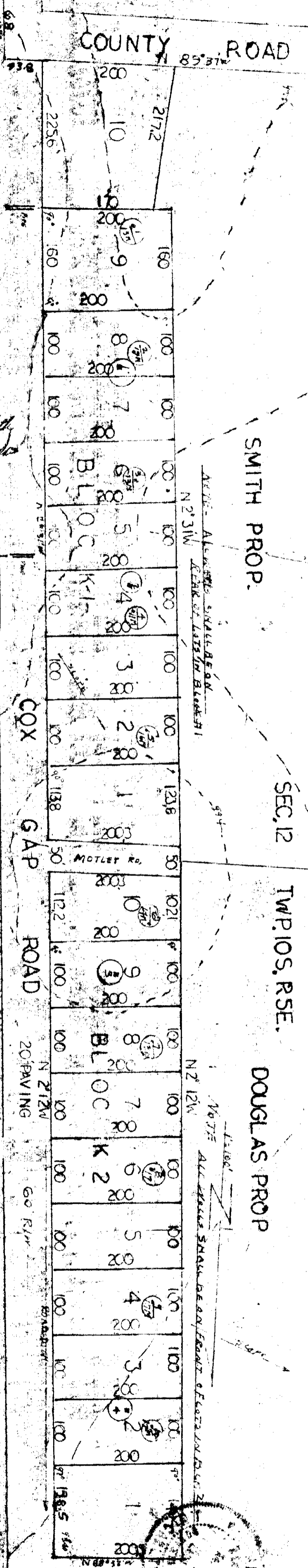
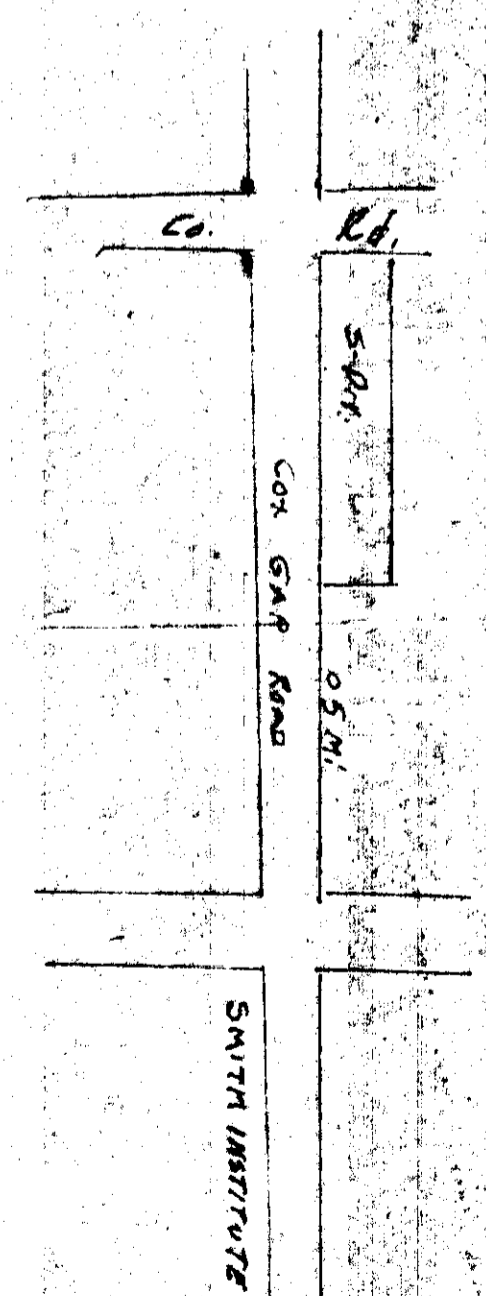
State of Alabama
 Etowah County
 I, Betty Brant, a Notary Public in and for said state do hereby certify that the names whose are signed to the foregoing conveyance are known to me and after being informed of the contents did sign same voluntarily on this 24th day of April, 1923.

My Commission Expires on 2-10-1923.

Signed Betty Brant
 Notary Public



100
 150
 180



SMITH ~ DOUGLAS SUB-DIVISION
 ETOWAH ~ COUNTY, ALABAMA



1-81