

STATE OF ALABAMA
COUNTY OF ETOWAH

I, JAMES T. JONES, REGISTERED ENGINEER AND SURVEYOR OF LAND IN ALABAMA, HEREBY CERTIFY THAT THE FOREGOING IS A TRUE AND CORRECT MAP OF THE LANDS HEREIN SHOWN.

WITNESS MY HAND AND SEAL THIS 14th DAY OF APRIL, 1970.
James T. Jones
JAMES T. JONES, No. 416 2661

STATE OF ALABAMA
COUNTY OF ETOWAH

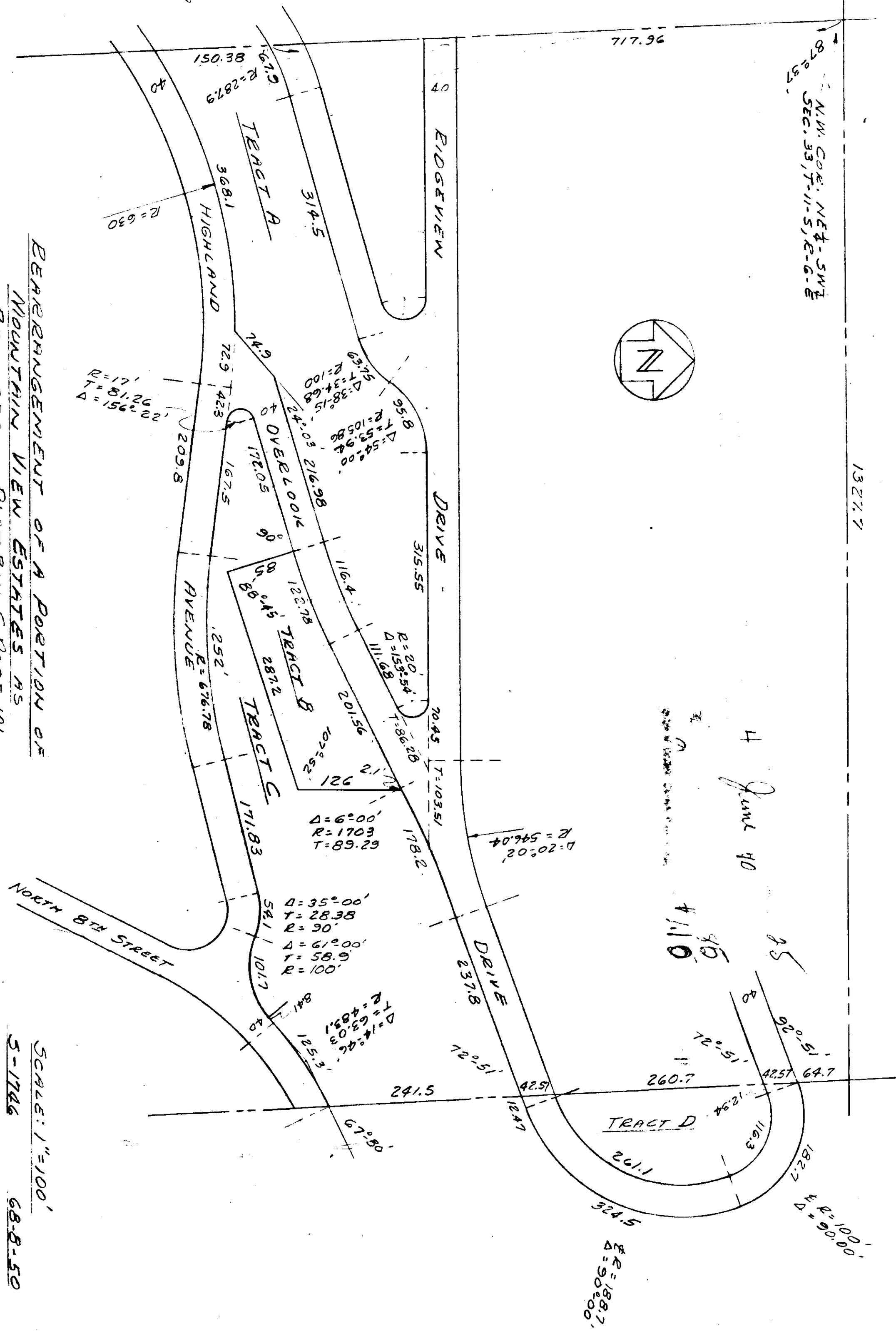
WE, ANDREW M. CHAFFIN AND WIFE ELSIE M. CHAFFIN AS OWNERS OF THE LANDS HEREIN SHOWN, DO HEREBY CERTIFY AND AGREE TO THE MAP AND CORRECT AND TRUE THIS THE 14th DAY OF MAY, 1970.

Elsie M. Chaffin
Andrew M. Chaffin
ANDREW M. CHAFFIN, BY
ELSIE M. CHAFFIN, HIS
WIFE, IN FACT

STATE OF ALABAMA
COUNTY OF ETOWAH

I, *Notary Public*, A NOTARY PUBLIC IN AND FOR THE STATE OF ALABAMA, DO HEREBY CERTIFY THAT ELSIE M. CHAFFIN, IN FACT BEFORE ME AND WIFE ANDREW M. CHAFFIN, WHO ARE THE OWNERS OF THE LANDS HEREIN SHOWN, HAVE REQUESTED ME TO PREPARE AND RECORD THIS MAP OF THE LANDS HEREIN SHOWN, AND THAT I HAVE EXECUTED THE SAME VOLUNTARILY ON THE DAY THE SAME BECAME DUE. WITNESS MY HAND AND SEAL THIS THE 14th DAY OF MAY, 1970.

MY COMMISSION EXPIRES *Notary Public*



REARRANGEMENT OF A PORTION OF
MOUNTAIN VIEW ESTATES AS
RECORDED IN PLAT BOOK PAGE 101

PREPARED BY
TROY E. WATKINS & ASSOCIATES, INC.
GADSDEN, ALABAMA

SCALE: 1"=100'
5-1746
68-8-50
68-8-37
68-8-55
68-8-7
68-8-67
68-8-6
68-8-29
68-8-43

APPROVED: *Russell Jackson* 5-24-70
CITY ENGINEER
CITY OF GADSDEN, ALABAMA

APPROVED: *White Marks & Sewer Board*
WHITE MARKS & SEWER BOARD
CITY OF GADSDEN

APPROVED: *CR* 5-20-70
PLANNING COMMISSION
CITY OF GADSDEN

APPROVED: *Watts* 6-3-70
ETOWAH COUNTY
HEALTH DEPARTMENT

FILE 67