

WILD ACRES UNIT FOUR
BLOCKS A & B

SHEET 1 OF 3

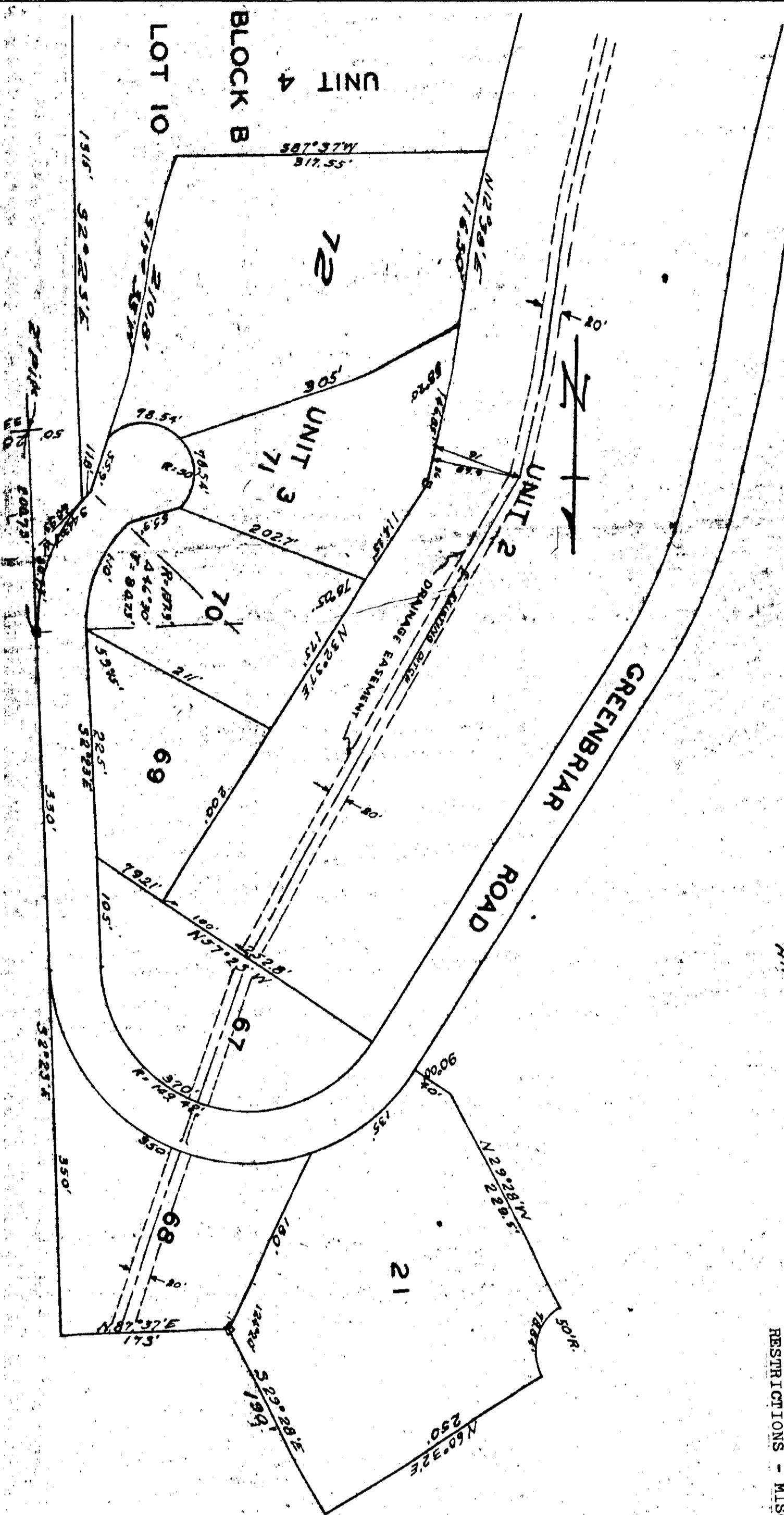
8

Scale 1" = 100'
All lot corners marked with 'C'

WILD ACRES UNIT THREE (REVISED)
AND REARRANGEMENTS OF LOTS 21 & 48 UNIT 2

RESTRICTIONS - MISC. 108 PAGE 223

APPROVED TO RESTRICTIONS-MISC. 122 PG. 912



State of Alabama
County of Etowah
The undersigned owners of revised lots in Unit No. 3 hereby
reaffirm, confirm and adopt the revisions shown hereon.

This the 31st day of 1970

By: Robert L. Roberts
Robert L. Roberts
Robert L. Roberts
Robert L. Roberts

OFFICE OF PROBATE JUDGE
COUNTY OF ALABAMA
30 APR 10 1970
Court Room
Judge
Shirley S. Williams

State of Alabama
County of Etowah
I, Robert L. Roberts, a registered land surveyor of the State of Alabama, hereby certify that I made a survey of the lands embraced within the foregoing plat; that the same is true and correct as therein represented.

This the 31st day of January, 1970.

Robert L. Roberts
Reg. #5597

State of Alabama
County of Etowah
I, Robert L. Roberts, a registered land surveyor of the State of Alabama, hereby certify that I made a survey of the lands embraced within the foregoing plat; that the same is true and correct as therein represented.

This the 31st day of January, 1970.

Robert L. Roberts
Reg. #5597

State of Alabama
County of Etowah
I, Robert L. Roberts, a registered land surveyor of the State of Alabama, hereby certify that I made a survey of the lands embraced within the foregoing plat; that the same is true and correct as therein represented.

This the 31st day of January, 1970.

Robert L. Roberts
Reg. #5597

State of Alabama
County of Etowah
I, Robert L. Roberts, a registered land surveyor of the State of Alabama, hereby certify that I made a survey of the lands embraced within the foregoing plat; that the same is true and correct as therein represented.

This the 31st day of January, 1970.

Robert L. Roberts
Reg. #5597

State of Alabama
County of Etowah
I, Robert L. Roberts, a registered land surveyor of the State of Alabama, hereby certify that I made a survey of the lands embraced within the foregoing plat; that the same is true and correct as therein represented.

This the 31st day of January, 1970.

Robert L. Roberts
Reg. #5597

State of Alabama
County of Etowah
I, Robert L. Roberts, a registered land surveyor of the State of Alabama, hereby certify that I made a survey of the lands embraced within the foregoing plat; that the same is true and correct as therein represented.

This the 31st day of January, 1970.

Robert L. Roberts
Reg. #5597