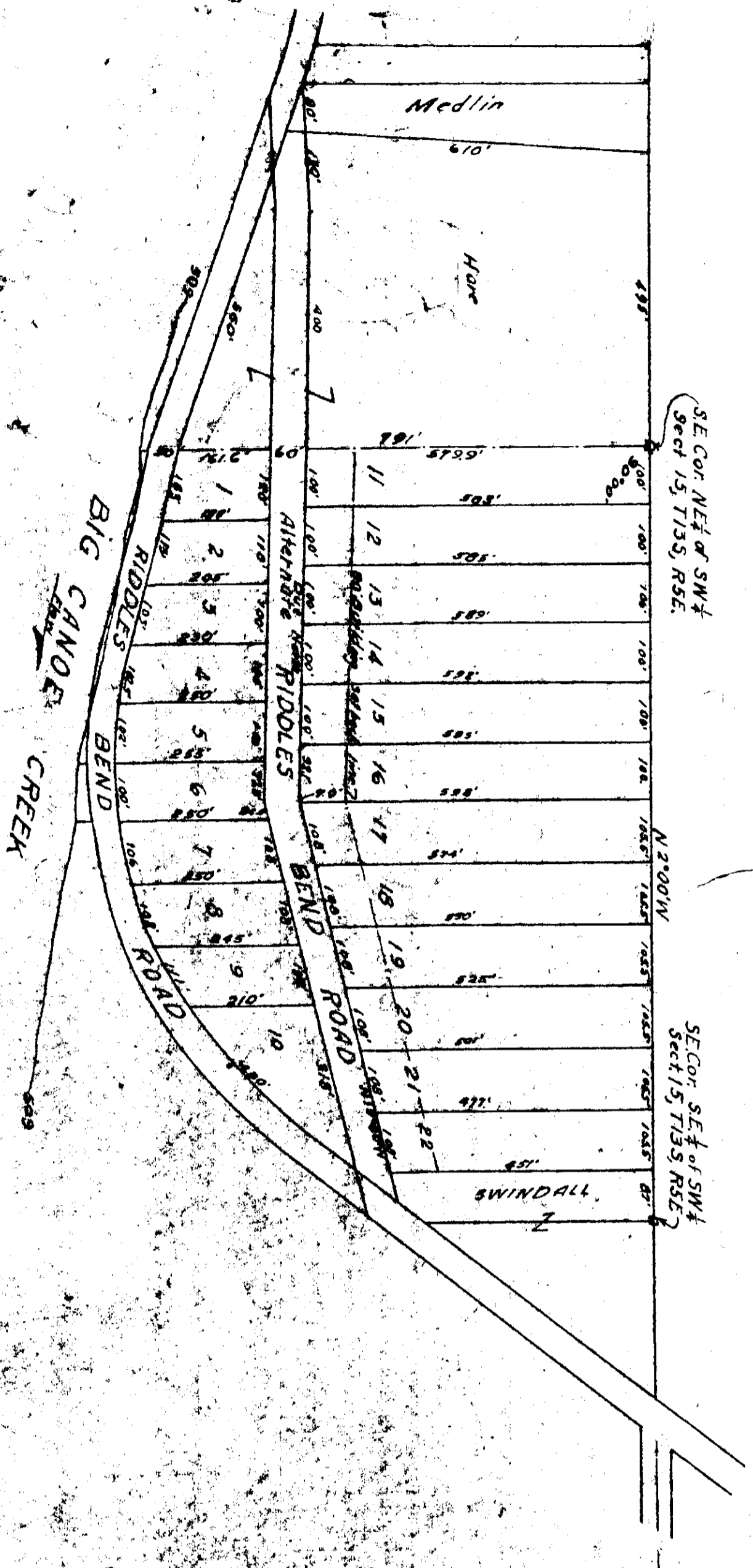


CANOE CREEK HILLS



ALL RIGHTS RESERVED
 ATTORNEY AT LAW
 OFFICE OF PROBATE JUDGE
 41
 195
 195

I, Robert L. Roberts, a registered Civil Engineer and
 Land Surveyor of Gadsden, Alabama, hereby certify that
 I made a survey of the lands embraced within the fore-
 going plat, said lands being a part of the SE 1/4 of
 Section 15, T 13 S, R 5 E of the Huntsville Meridian,
 Etowah County, Alabama, that the foregoing is a true
 and correct representation of said survey, this 18th
 day of August, 1969.

Scale: 1" = 800'
 Robert L. Roberts
 Reg. #3307

STATE OF ALABAMA
COUNTY OF ETOWAH

We, the undersigned owners of the lands embraced within
 the foregoing plat, do hereby ratify, confirm and adopt
 the same as being true and correct.

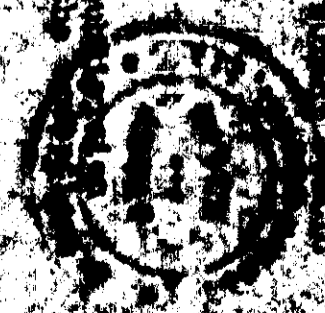
This the 30th day of August, 1969.

James J. Calhoun (L.S.)
 A. H. Mullin (L.S.)
 J. H. Hargy (L.S.)
 Andrew Swindall (L.S.)

STATE OF ALABAMA
COUNTY OF ETOWAH

I, a Notary Public in and
 for said County, and State, hereby certify that the
 above contents, form and substance of the foregoing
 instrument and the signatures of the persons named
 therein are true and correct, and that the same are
 the true and correct representation of the facts as
 stated in the foregoing plat.

Notary Public
 James J. Calhoun



For the Etowah County Health Department:
 Health Commissioner
 1969

For the Etowah County Board of Supervisors:

1969

PLAT Book A page 48