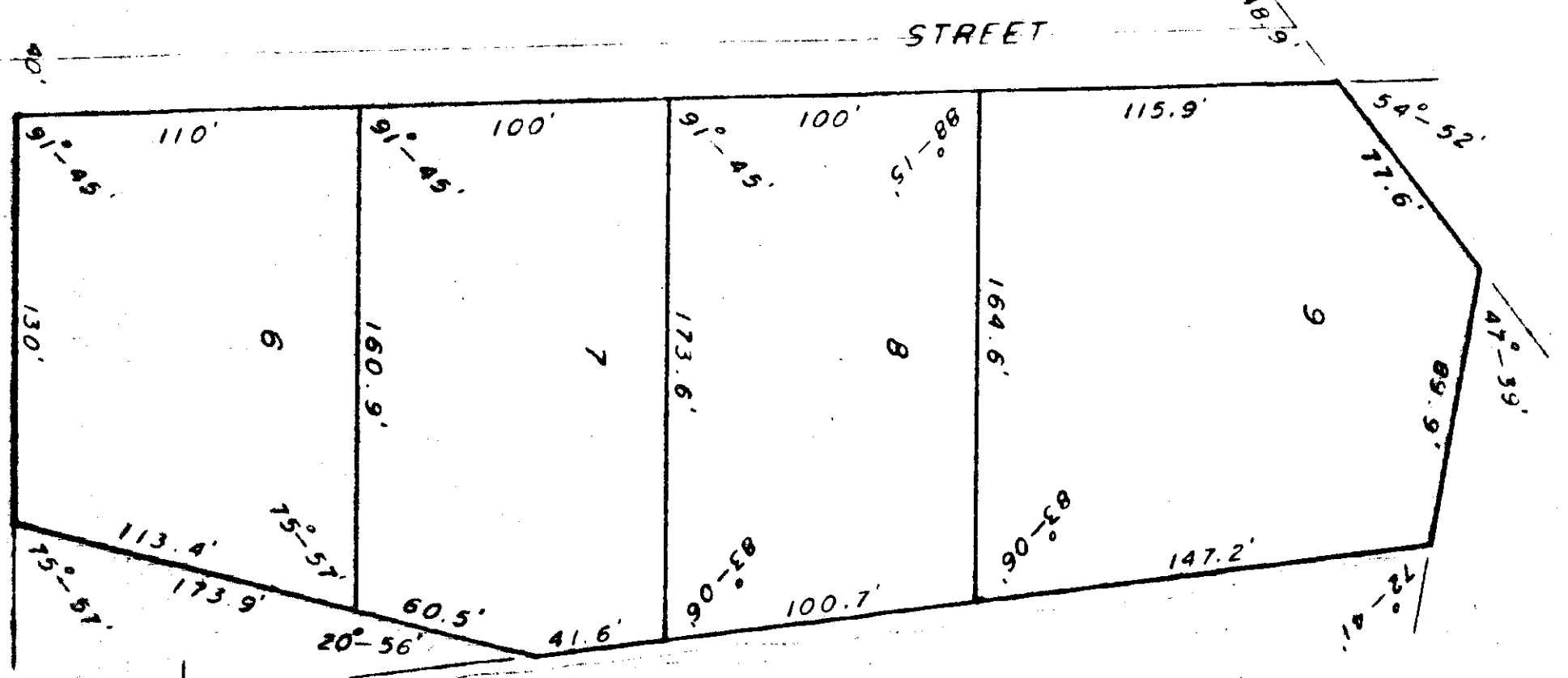
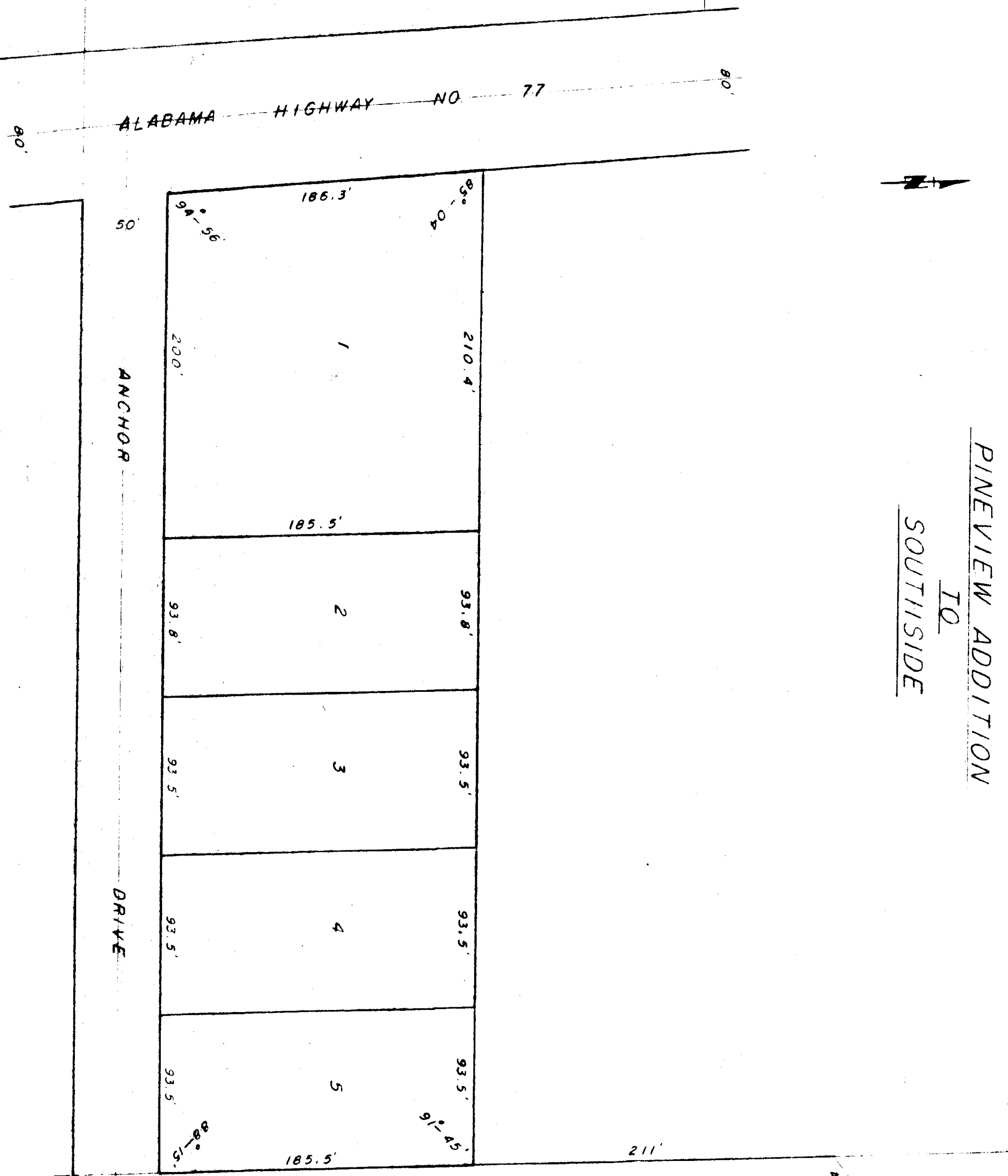


PINEVIEW ADDITION  
TO  
SOUTHSIDE



S.W. COR. S.W. 1/4 N.W. 1/4  
SEC. 4, T-13-S, R-6-E

S-1276 67-3-40-44

SCALE: 1"=50'

STATE OF ALABAMA,  
COUNTY OF ETOWAH:

WE, GILMER P. PHILLIPS AND INEZ B. PHILLIPS, AS OWNERS OF THE  
LANDS HEREIN SHOWN, DO HEREBY RATIFY AND ADOPT THE WITHIN MAP AS  
BEING TRUE AND CORRECT.  
THIS THE 30<sup>TH</sup> DAY OF SEPTEMBER 1968.

BY Gilmer P. Phillips  
GILMER P. PHILLIPS

BY Inez B. Phillips  
INEZ B. PHILLIPS

OFFICE OF PROBATE JUDGE  
ETOWAH COUNTY

Wiley A. ...  
Judge of Probate, Etowah County, Ala. 1968

APPROVED:  
ETOWAH COUNTY  
HEALTH DEPARTMENT

STATE OF ALABAMA,  
COUNTY OF ETOWAH:

I, JAMES T. JONES, A REGISTERED ENGINEER AND LAND SURVEYOR OF  
GADSDEN, ALABAMA, HEREBY CERTIFY THAT THE FOREGOING IS A TRUE  
AND CORRECT MAP OR PLAN OF THE LAND HEREIN SHOWN,  
ACCORDING TO MY SURVEY THIS THE 10<sup>TH</sup> DAY JULY 1968.

JAMES T. JONES, ALABAMA REG. 2261  
TROY E. WATFORD AND ASSOCIATES, INC.

STATE OF ALABAMA,  
COUNTY OF ETOWAH:

I, Wiley A. ..., A NOTARY PUBLIC IN AND FOR SAID  
COUNTY AND STATE, HEREBY CERTIFY THAT GILMER P. PHILLIPS AND  
INEZ B. PHILLIPS, AS OWNERS, HAVE SIGNED THE WITHIN MAP, AND  
WHO ARE KNOWN TO ME, ACKNOWLEDGED BEFORE ME ON THIS DATE, THAT  
BEING INFORMED OF THE CONTENTS, THEY EXECUTED THE SAME  
VOLUNTARILY, ON THE DAY THE SAME BECAME DATE.

WITNESS MY HAND AND SEAL THIS THE 30<sup>TH</sup> DAY OF SEPTEMBER  
1968.

MY COMMISSION EXPIRES SEPT. 5, 1972

Wiley A. ...  
NOTARY PUBLIC