

STATE OF ALABAMA
COUNTY OF ETOWAH

We, the undersigned owners of the lands embraced within the foregoing plat, do hereby ratify, confirm and adopt the same as being true and correct.

This the 30 day of August, 1968.

Frank Alton Casey (L.S.) J. K. Casey (L.S.)
 Marie Casey (L.S.) BY: Frank Alton Casey, Attorney in Fact (L.S.)
 Frank Alton Casey, Attorney in Fact (L.S.) Louise Casey (L.S.)
 Varner Casey (L.S.) BY: Frank Alton Casey, Attorney in Fact (L.S.)
 Agnes Casey (L.S.) Ronald Casey (L.S.)
 John Roy Casey (L.S.) BY: Frank Alton Casey, Attorney in Fact (L.S.)
 Frank Alton Casey, Attorney in Fact (L.S.) Shirley Casey (L.S.)
 Esther Casey (L.S.) BY: Frank Alton Casey, Attorney in Fact (L.S.)
 Frank Alton Casey, Attorney in Fact (L.S.) Larry Casey (L.S.)
 Helen Casey Lee (L.S.) BY: Frank Alton Casey, Attorney in Fact (L.S.)
 Frank Alton Casey, Attorney in Fact (L.S.) Kay Lanette Casey Entreklin (L.S.)
 Lovenia Adams (L.S.) BY: Frank Alton Casey, Attorney in Fact (L.S.)
 Frank Alton Casey, Attorney in Fact (L.S.) Jerry Entreklin (L.S.)
 Hall Adams (L.S.) BY: Frank Alton Casey, Attorney in Fact (L.S.)
 Frank Alton Casey, Attorney in Fact (L.S.)

CASEY ESTATES REARRANGEMENT

MODIFICATION OF RESTRICTIVE COVENANTS
SEE MISC. 92 Pages 774 - 779 & 781

STATE OF ALABAMA
COUNTY OF ETOWAH

I, Oliver W. Nabors, a Notary Public in and for said County in said State, hereby certify that Frank Alton Casey, who is married to Marie Casey, Varner Casey and wife, Agnes Casey, whose names are signed to the foregoing instrument, and who are known to me, acknowledged before me on this day that, being informed of the contents of the instrument, they executed the same voluntarily, on the day the same bears date.

Given under my hand and notarial seal, this 30th day of August, 1968.

NOTARY PUBLIC

STATE OF ALABAMA
COUNTY OF ETOWAH

I, Oliver W. Nabors, a Notary Public in and for said County in said State, hereby certify that Frank Alton Casey, whose name as Attorney in Fact for Marie Casey, his wife, John Roy Casey and wife, Esther Casey, Helen Casey Lee, a divorced woman, Lovenia Adams and husband, Hall Adams, J. K. Casey and wife, Louise Casey, Ronald Casey and wife, Shirley Casey, Larry Casey, a single man, Kay Lanette Casey Entreklin and husband, Jerry Entreklin, respectively, is signed to the foregoing instrument and who is known to me, acknowledged before me on this day that, being informed of the contents of the instrument, he, in his capacity as such attorney in fact, and with full authority, executed the same voluntarily, on the day the same bears date.

Given under my hand and notarial seal, this 30th day of August, 1968.

NOTARY PUBLIC

Note: Lots in Block "D" restricted to agricultural use only.
D Denotes Conc. Monuments.

STATE OF ALABAMA
COUNTY OF ETOWAH

We, the undersigned, hereby approve the subdivision represented by the foregoing plat, with the exceptions as noted, if any.

For the Etowah County Health Department

August 30 1968
Date

For City Engineer, Gadsden, Ala.

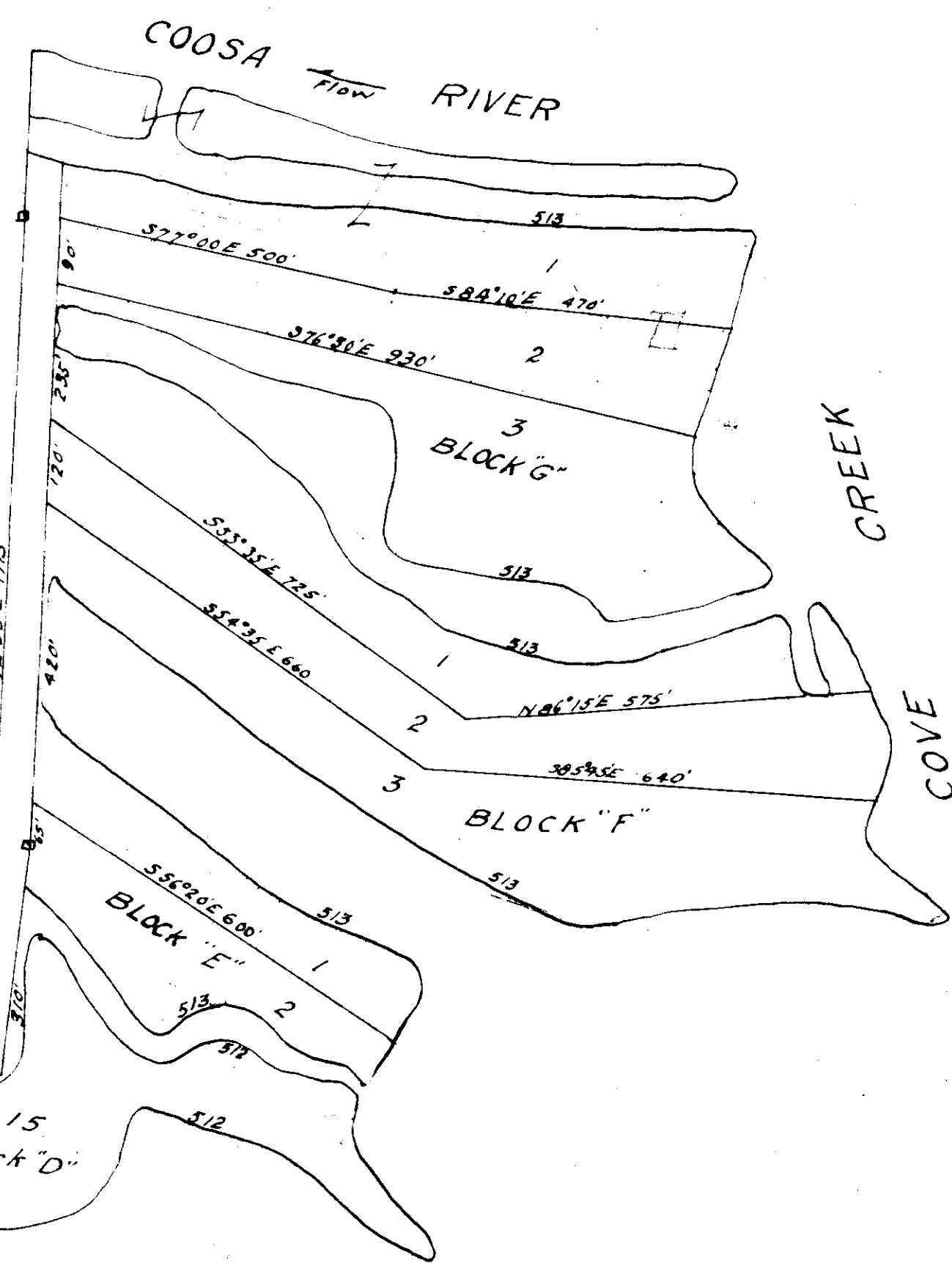
For Planning Commission, Gadsden, Ala.

Hutton R. Savage

Don 9/24/68

C. B. Collins 9/24/68

H-314



Robert L. Roberts, Registered Professional Surveyor, Alabama, hereby certifies that I made a survey of the lands within the foregoing plat, and that the same are a part of the NW 1/4 of Section 6, T125, R7E, and the SW 1/4 of Section 5, T125, R7E, part of the NW 1/4 Section 6, T125, R7E, part of the SW 1/4 Section 5, T125, R7E, of the County of Etowah, State of Alabama, that the foregoing is a true and correct representation of said survey this 29th day of August, 1968.

30 August 68

415
460
513
16
Block "D"

SE. Cor. NW 1/4, NW 1/4
Section 6, T125, R7E

