

# GREEN VALLEY LAKE ESTATES

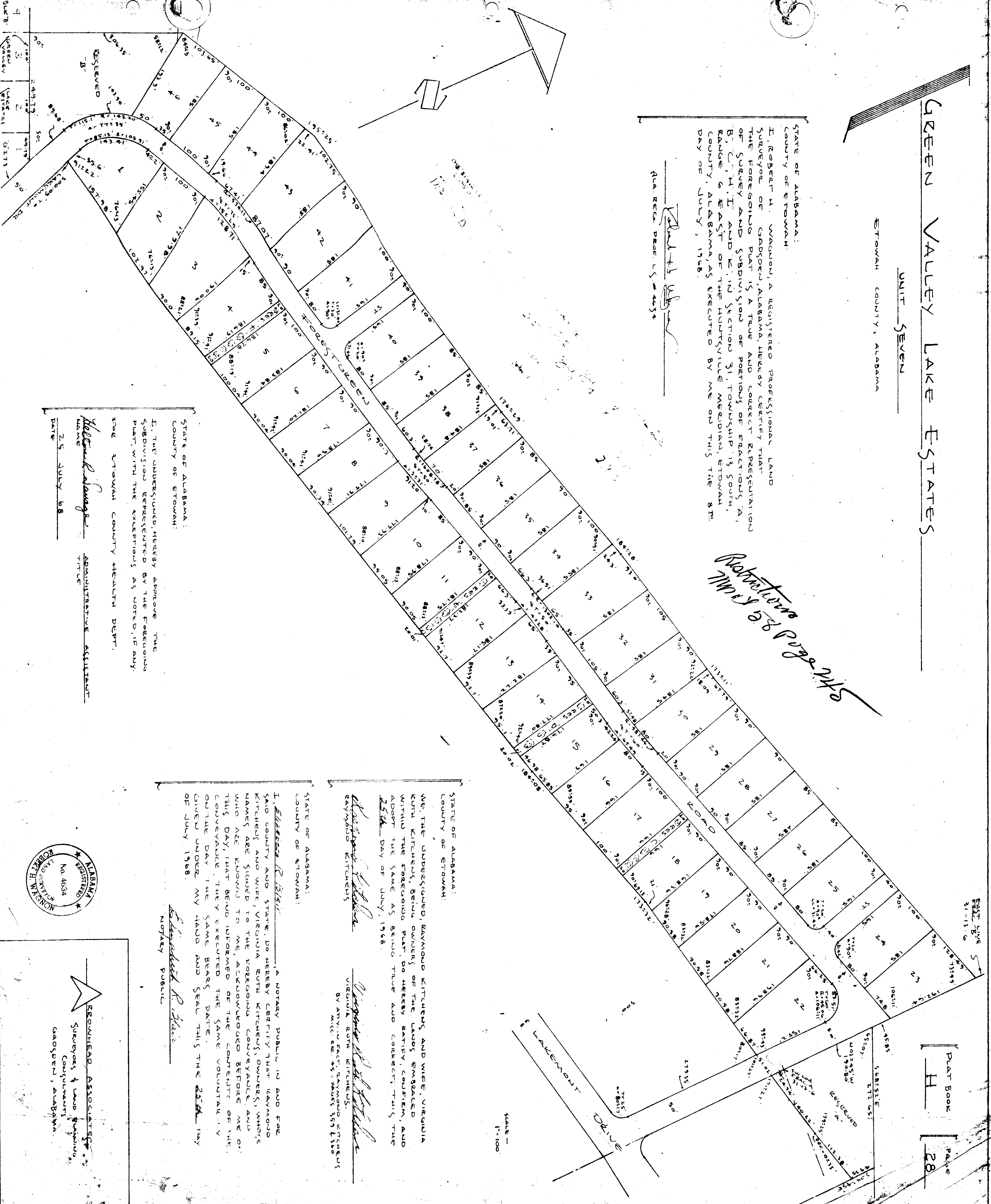
UNIT SEVEN

ETOWAH COUNTY, ALABAMA

STATE OF ALABAMA:  
COUNTY OF ETOWAH:  
I, ROBERT H. WAGGONER, A REGISTERED PROFESSIONAL LAND SURVEYOR OF GADSDEN, ALABAMA, HEREBY CERTIFY THAT THE FOREGOING PART IS A TRUE AND CORRECT REPRESENTATION OF SURVEY AND SUBDIVISION OF PORTIONS OF FRACTIONS A, B, C, H, I, AND K, IN SECTION 31, TOWNSHIP 13 SOUTH, RANGE 6 EAST OF THE HUNTSVILLE MERIDIAN, ETOWAH COUNTY, ALABAMA, AS EXECUTED BY ME ON THIS THE 8<sup>TH</sup> DAY OF JULY, 1968.

Qua. Rec. Prof. L.S. #4034

*Robert H. Waggoner*  
7/10/68 Page 2/15



PLAT BOOK PAGE 28

STATE OF ALABAMA:  
COUNTY OF ETOWAH:  
I, THE UNDERSIGNED, HEREBY APPROVE THE SUBDIVISION REPRESENTED BY THE FOREGOING PART, WITH THE EXCEPTIONS AS NOTED, IF ANY.

THE ETOWAH COUNTY HEALTH DEPT.  
*Helen R. Savage*  
ADMINISTRATIVE ASSISTANT  
DATE 25 JULY 68

STATE OF ALABAMA:  
COUNTY OF ETOWAH:  
I, *Elizabeth R. Blair*, A NOTARY PUBLIC IN AND FOR SAID COUNTY AND STATE, DO HEREBY CERTIFY THAT RAYMOND KITCHENS AND WIFE, VIRGINIA RUTH KITCHENS, WHOSE NAMES ARE SIGNED TO THE FOREGOING CONVEYANCE, AND WHO ARE KNOWN TO ME, ACKNOWLEDGED BEFORE ME ON THIS DAY, THAT BEING INFORMED OF THE CONTENTS OF THE CONVEYANCE, THEY EXECUTED THE SAME VOLUNTARILY ON THE DAY THE SAME BEARS DATE.  
GIVEN UNDER MY HAND AND SEAL THIS THE 25<sup>TH</sup> DAY OF JULY 1968.

STATE OF ALABAMA:  
COUNTY OF ETOWAH:  
WE, THE UNDERSIGNED, RAYMOND KITCHENS AND WIFE, VIRGINIA RUTH KITCHENS, BEING OWNERS OF THE LANDS EMBAECED WITHIN THE FOREGOING PART, DO HEREBY RATIFY, CONFIRM, AND ADOPT THE SAME AS BEING TRUE AND CORRECT, THIS THE 25<sup>TH</sup> DAY OF JULY, 1968.



REGISTERED ASSOCIATE  
Surveyors & Land Subdividers  
GADSDEN, ALABAMA