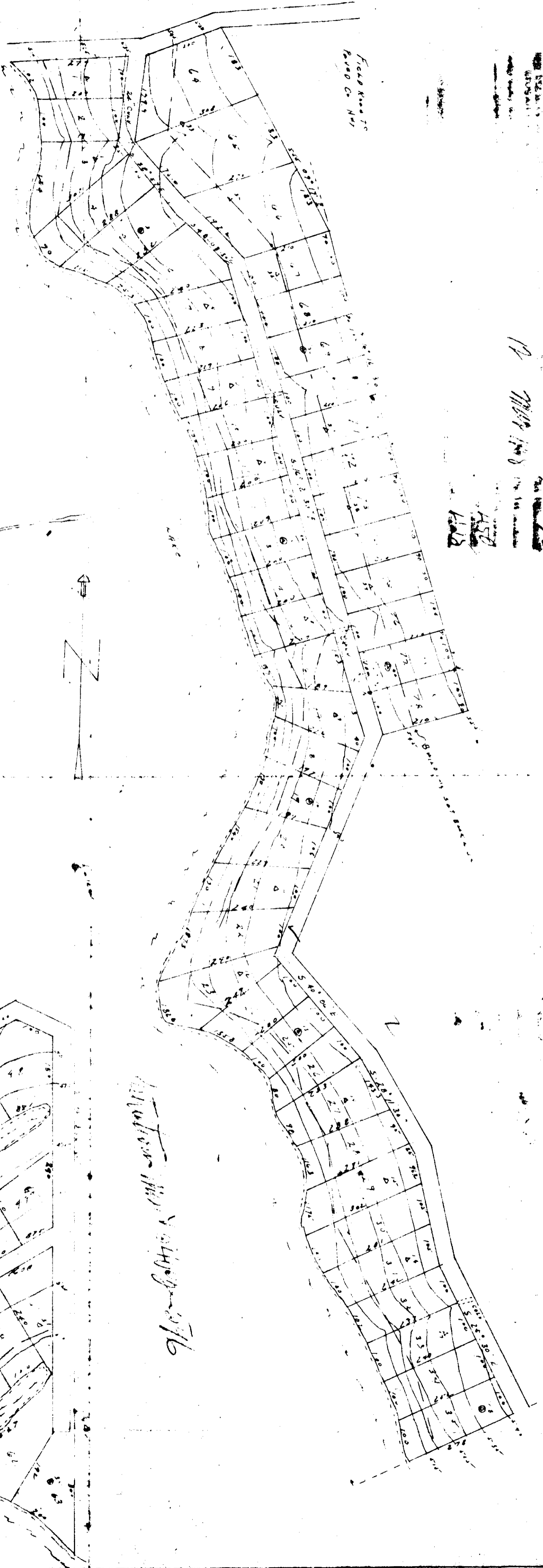


CANOE CREEK PARADISE AMENDMENT - Misc 241 Page 39 H-22

Leaf 93 Page 899



Face here to
Face Co. No.

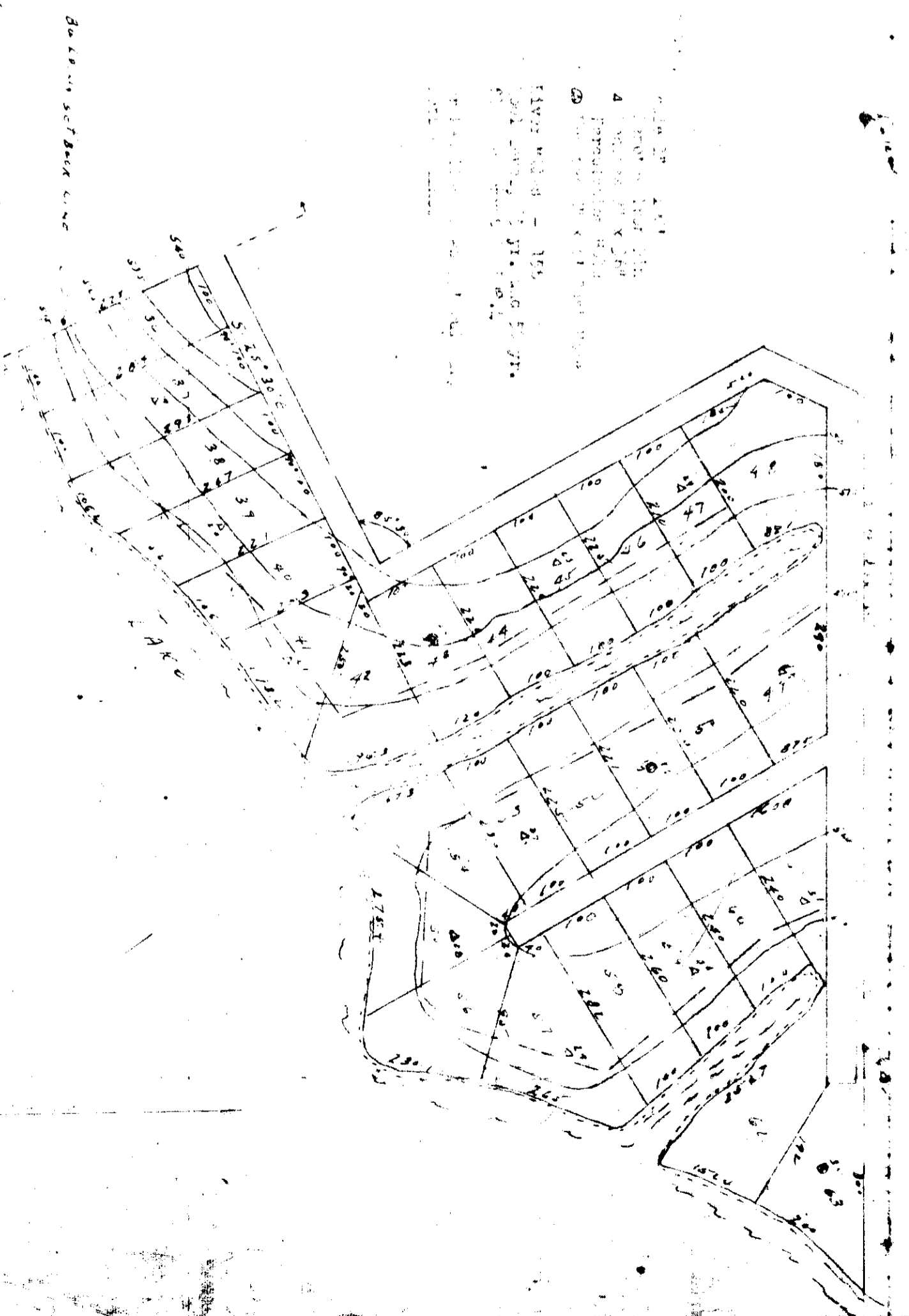
19 May 1908

4522
4523
4524

Alverson W. V. City of 1906

Survey of that part of the land...
County of Lincoln, State of Nebraska...
a tract of ground that and to...
Says Andrew Dilling *APPL*

Alverson W. V. City of 1906
4522
4523
4524



Andrew Dilling

Alverson W. V. City of 1906

