

FORMERLY MAE BIGHAM PROPERTY.

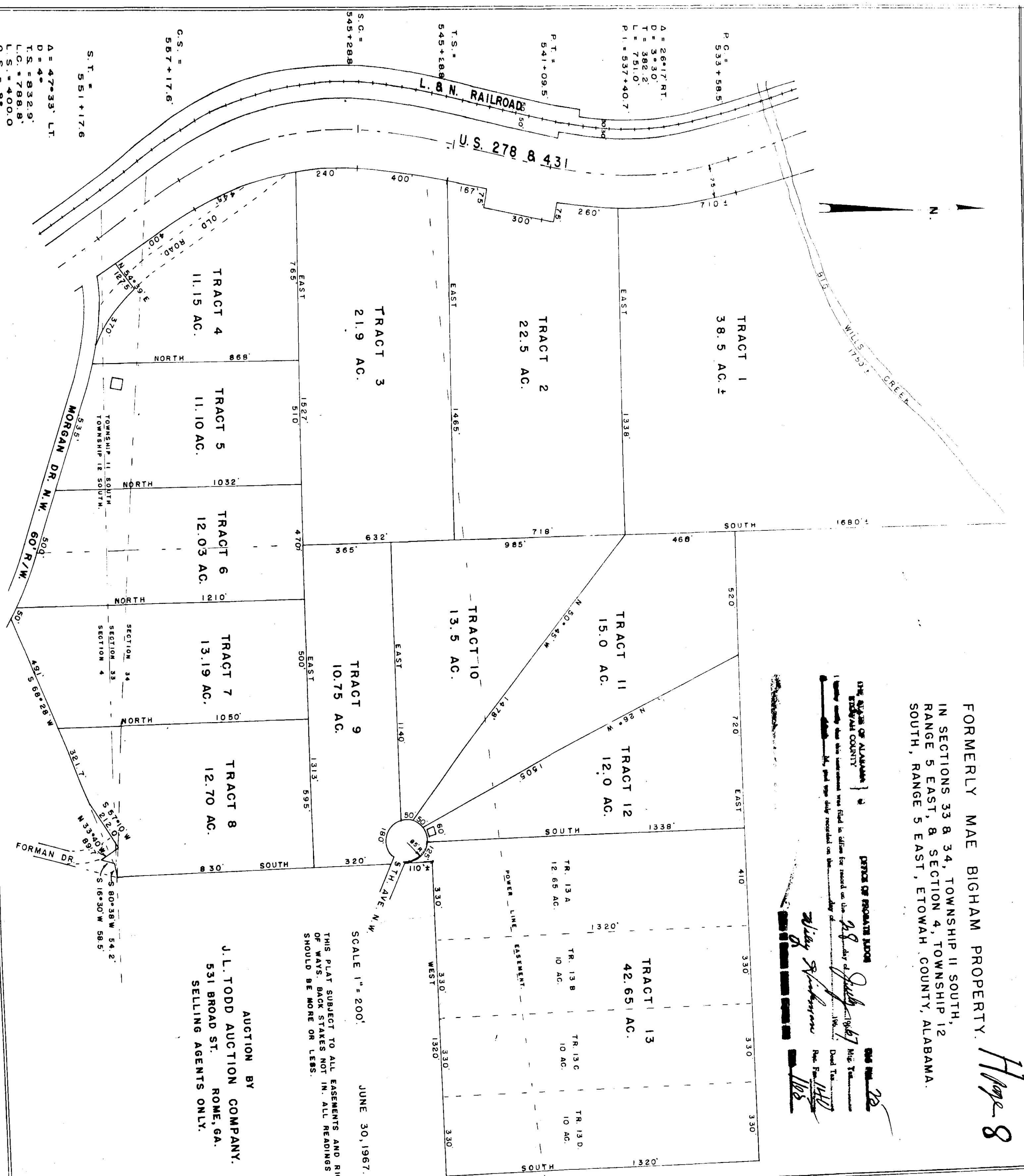
Page 8

IN SECTIONS 33 & 34, TOWNSHIP 11 SOUTH,
RANGE 5 EAST, & SECTION 4, TOWNSHIP 12
SOUTH, RANGE 5 EAST, ETOWAH COUNTY, ALABAMA.

DEED OF ALIENATION
ETOWAH COUNTY

DEED OF DONATION
ETOWAH COUNTY

Notary Public
Walter Spivey
Notary Public



AUCTION BY
J. L. TODD AUCTION COMPANY,
531 BROAD ST.
ROME, GA.
SELLING AGENTS ONLY.

SCALE 1" = 200'
JUNE 30, 1967.
THIS PLAT SUBJECT TO ALL EASEMENTS AND RIGHT
OF WAY STAKES NOT IN. ALL READINGS
SHOULD BE MORE OR LESS.

A = 47°33' LT.
D = 4'
T.S. = 832.9'
L.C. = 788.8'
O.S. = 400.0'
O.S. = 8'

S.T. =
551+17.6

C.S. =
587+17.6

S.C. =
545+288

T.S. =
545+288

P.T. =
541+09.5

A = 26°17' RT.
D = 3*30'
T = 382.2'
L = 751.0'
P.I. = 537+40.7'

P.C. =
533+58.5