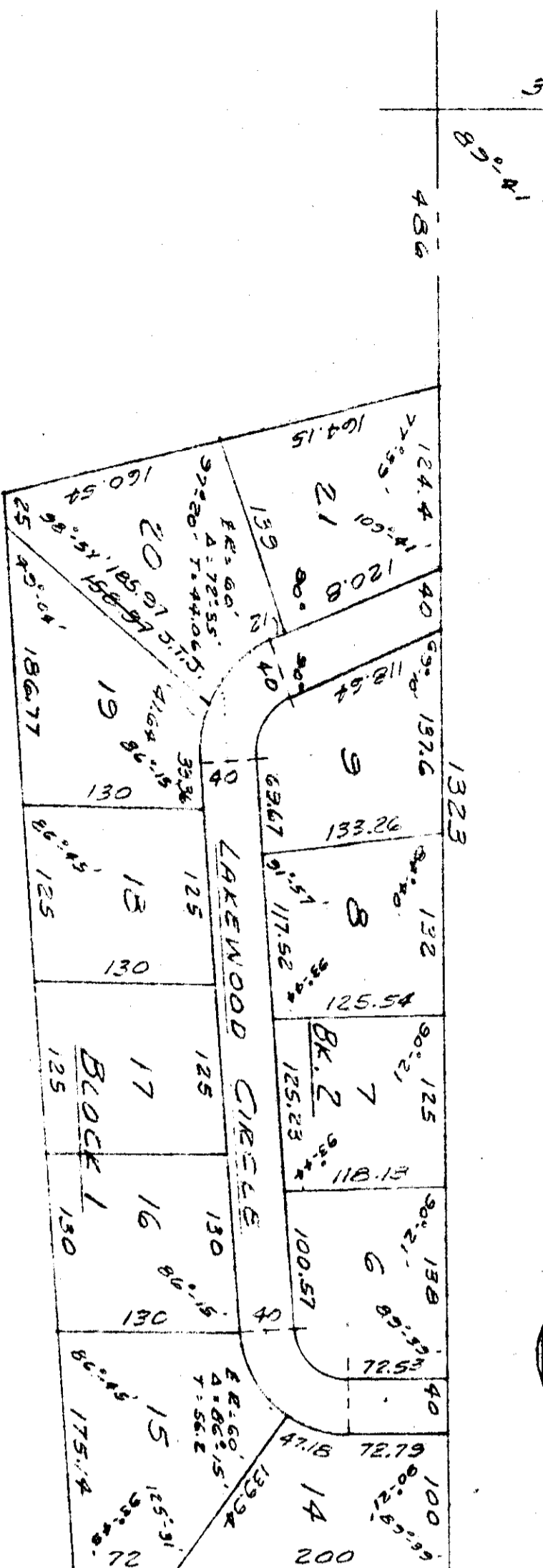
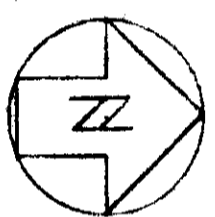


FIRST LAKEWOOD ADDITION TO
RAINBOW CITY
ETOWAH COUNTY, ALA.

2ND COR. S.E. 1/4 - SW 1/4
SEC. 31, T12-S, R-6-E



S-1250

6357-5-45
27-1-7

STATE OF ALABAMA,
COUNTY OF ETOWAH:

I, JAMES T. JONES, A RESIDENT OF THE COUNTY OF ETOWAH, ALABAMA, DO HEREBY CERTIFY THAT THE ABOVE SHOWN DIMENSIONS OF THE LANDS SHOWN HEREIN, AND BEING THE SAME, WERE MEASURED AND PLANTED BY ME AND MYSELF AND OTHERS AS SHOWN ON THE PLAT THIS 31ST DAY OF JANUARY, 1967.

JAMES T. JONES
JAMES JONES, NW 12022661

STATE OF ALABAMA,
COUNTY OF ETOWAH:

I, JAMES T. JONES, A RESIDENT OF THE COUNTY OF ETOWAH, ALABAMA, DO HEREBY CERTIFY THAT THE ABOVE SHOWN DIMENSIONS OF THE LANDS SHOWN HEREIN, AND BEING THE SAME, WERE MEASURED AND PLANTED BY ME AND MYSELF AND OTHERS AS SHOWN ON THE PLAT THIS 31ST DAY OF JANUARY, 1967.

NOTARY PUBLIC

STATE OF ALABAMA,
COUNTY OF ETOWAH:

I, L. S. BENDER HOOD, HUSBAND OF MARY C. BENDER HOOD, DO HEREBY CERTIFY THAT THE ABOVE SHOWN DIMENSIONS OF THE LANDS SHOWN HEREIN, AND BEING THE SAME, WERE MEASURED AND PLANTED BY ME AND MYSELF AND OTHERS AS SHOWN ON THE PLAT THIS 31ST DAY OF JANUARY, 1967.

L. S. BENDER HOOD
OWNER

MARY C. BENDER HOOD
OWNER

THE WITHIN LINE IS HEREBY MEASURED AND RECEIVED FOR RECORD BY THE ETOWAH COUNTY HEALTH DEPARTMENT THIS 31ST DAY OF JANUARY, 1967.

E. J. KILPATRICK, JR.
NOTARY PUBLIC

RECORDED IN BOOK 31 PAGE 31

31

31

105