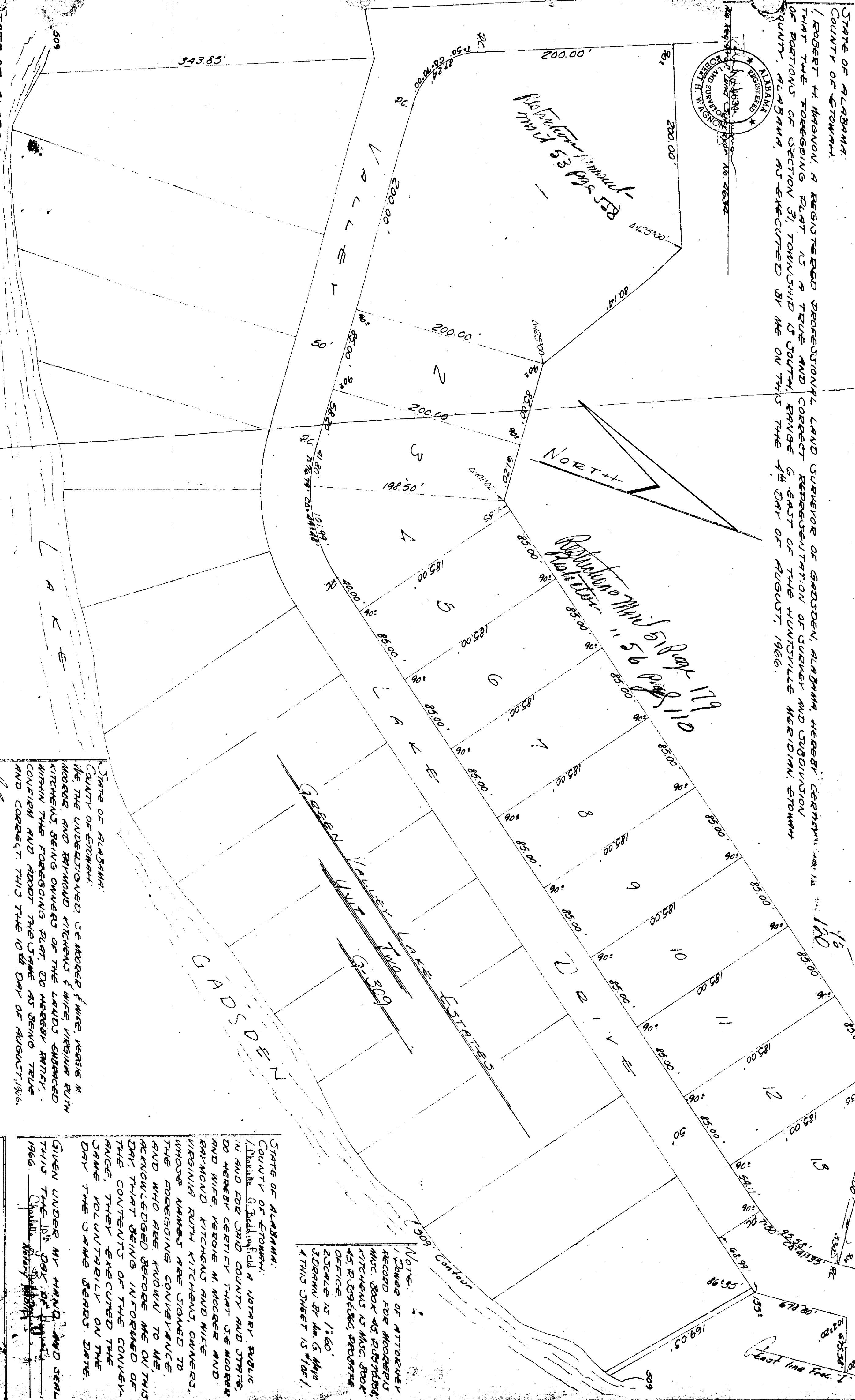


GREEN VALLEY LAKES STATES UNIT FOUR

STATE OF ALABAMA
 COUNTY OF STOWAN.
 ROBERT H. MAGNAN, A REGISTERED PROFESSIONAL LAND SURVEYOR OF GREEN VALLEY, ALABAMA, HEREBY CERTIFIES THAT THE FOREGOING PLAT IS A TRUE AND CORRECT REPRESENTATION OF SUBDIVISION OF SECTION 5, EAST OF THE HUNTSVILLE MERIDIAN, STOWAN COUNTY, ALABAMA, AS EXECUTED BY ME ON THIS THE 14TH DAY OF AUGUST, 1966.



PLAT BOOK G
 PAGE 373

Note:
 Power of Attorney
 Record for Woodger's
 Misc. Book 45, p. 207-208;
 Kitchens' Misc. Book
 45, p. 209-210; PROFFER
 STENCE, 15/160,
 STOWAN BY Am. G. Magro
 THIS SHEET IS 11071.

STATE OF ALABAMA,
 COUNTY OF STOWAN.
 I, Robert H. Magnan, Notary Public,
 do hereby certify that Robert H. Magnan
 and Virginia Ruth Kitchens and Woodger's
 and Proffer Stence are duly qualified to
 execute the foregoing conveyance,
 and who are known to me, and
 acknowledged before me on this
 day, that being informed of
 the contents of the convey-
 ance, they executed the
 same voluntarily on the
 day the same bears date.

STATE OF ALABAMA,
 COUNTY OF STOWAN.
 I, Robert H. Magnan, Notary Public,
 do hereby approve the subdivision represented by this
 plat with the exceptions as noted, if any,
 or shown on the plat.

Approved by
Robert H. Magnan
 Surveying Division
 Alabama

STATE OF ALABAMA,
 COUNTY OF STOWAN.
 I, Robert H. Magnan, Notary Public,
 do hereby approve the subdivision represented by this
 plat with the exceptions as noted, if any,
 or shown on the plat.