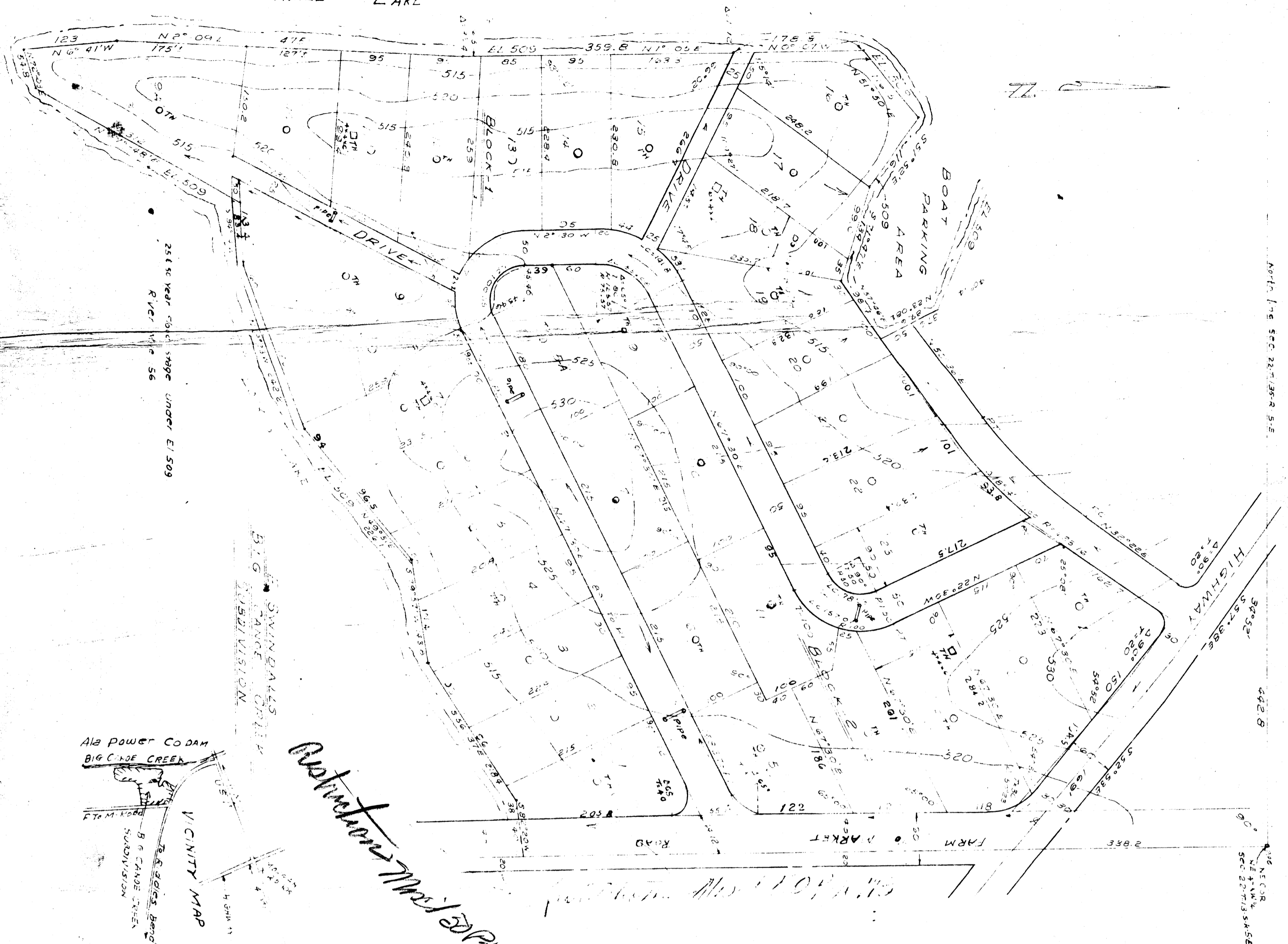


LOCK THREE LAKE



Notation May 1966
3113

15-361

I, E.H. LEV, A REGISTERED CIVIL ENGINEER AND SURVEYOR
 HEREBY CERTIFY THAT I MADE A SURVEY OF THE PROPERTY
 SHOWN HEREIN, AND THAT THE SAME IS TRUE AND CORRECT AS
 INDICATED, WITH ITS RELATION TO THE LINES OF THE ORIGINAL
 GOVERNMENT SURVEY.
 THIS July 25 1966 *EHLe*
 CE SURVEYOR REG 411

I, *Edna J. Burke* OWNER OF THE PROPERTY CONTAINED
 IN THE WITHIN PLAT, DO HEREBY RATIFY, CONFIRM AND ADOPT THE
 SAME AS BEING TRUE AND CORRECT.
 THIS THE 25 DAY OF July 1966.
Edna J. Burke
 Owner

THIS PLAT HEREBY IS ACCEPTED FOR RECORD BY THE
 WATER WORKS AND POWER BOARD.
 THIS THE 3 DAY OF August 1966.
 S. W. WILKINSON,
 S. W. WILKINSON

STATE OF ALABAMA:
 COUNTY OF STONEMAN: *Edna J. Burke* SHERIFF. THESE HAVE THE
 SAID STATE AND COUNTY HEREBY CERTIFIED THAT *Edna J. Burke*
 WHOSE NAME IS SIGNED TO THE WITHIN PLAT IS THE OWNER OF THE
 SAME AND A PERSON ENTITLED TO MAKE THE SAME. THAT SHE IS A
 SINGLE PERSON AND NOT A PARTNER OR PARTNER IN A FIRM OR
 CORPORATION OR OTHER ENTITY. ON THE DAY THE SAME SURVEY
 WAS MADE BY SAID SURVEYOR SHE WAS ALIVE AND OF SOUND MIND
 AND UNDER NO INFLUENCE OF DRUGS OR ALCOHOLIC BEVERAGES.
 GIVEN UNDER MY HAND ON THIS THE 25 DAY OF July 1966

THE WITHIN PLAT IS HEREBY ACCEPTED FOR RECORD FOR THE
 WATER WORKS AND POWER BOARD.
 THIS THE 16 DAY OF August 1966.
Hester R. Robinson
 HEALTH OFFICER

THE WITHIN PLAT IS HEREBY ACCEPTED FOR THE GADSDEN CITY
 PLANNING BOARD AND THE CITY ENGINEER FOR RECORD.
 THIS THE 17 DAY OF August 1966.
 BY *G. H. GIBSON*
 GADSDEN CITY PLANNING BOARD
 GADSDEN CITY ENGINEER

