

State of Alabama  
County of Etowah

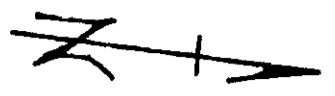
I, Robert L. Roberts, a registered Civil Engineer and Land Surveyor of Gadsden, Alabama, hereby certify that I made a survey of the land embraced within the foregoing plat, said lands being a portion of Section Fifteen (15), Township 12 South, Range Seven (7) East, of the Huntsville Meridian, Etowah County, Alabama, that the foregoing is a true and correct representation of said survey, this the 15th day of August, 1966.

*Robert L. Roberts*  
Reg. #3307

State of Alabama  
County of Etowah

We, the undersigned, hereby approve the subdivision represented by the foregoing plat, with the exceptions as noted, if any.

For the Etowah County Health Department:



*August 15, 1966*  
Date

*William C. Burgess*  
Administrative Health Officer

# BROCK HILLS

1ST ADDITION  
SCALE 1" = 100'

State of Alabama  
County of Etowah

The undersigned corporation, The Gadsden Corporation, being owner of the land embraced within the foregoing plat, hereby ratifies, confirms and adopts the same as being true and correct, this the 15th day of August, 1966.

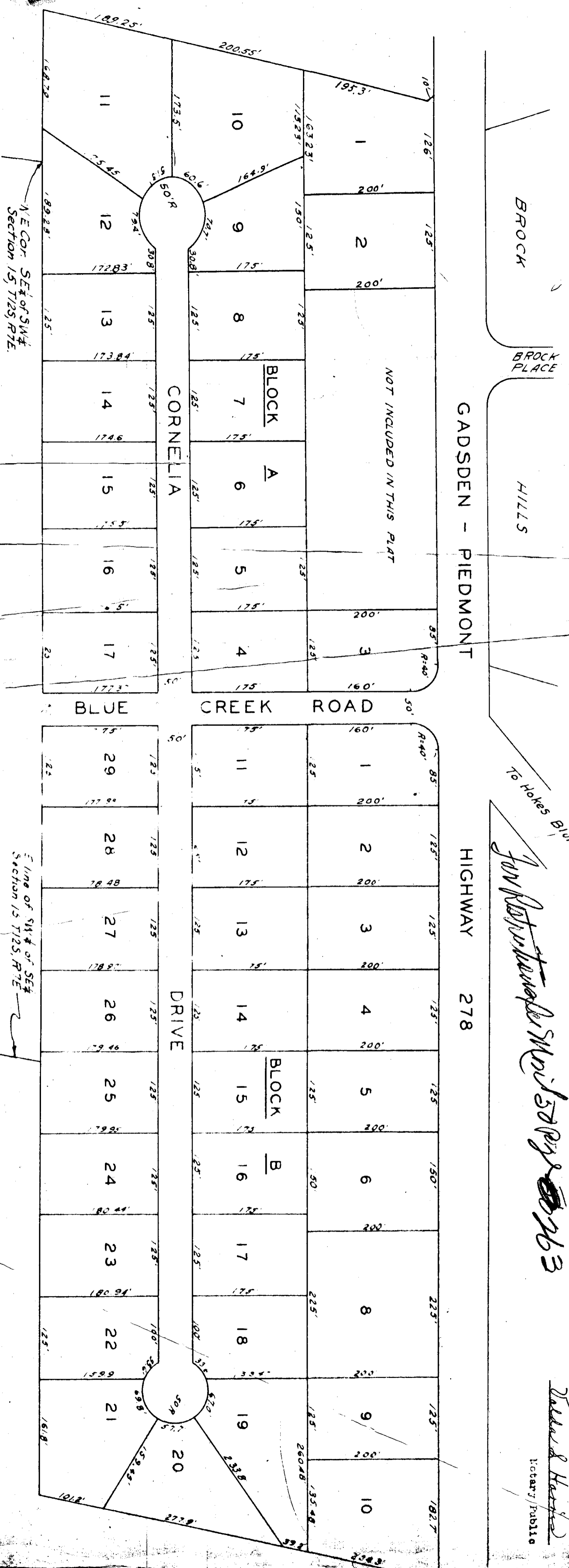
THE GADSDEN CORPORATION

*James V. Allen*  
President

State of Alabama  
County of Etowah

I, *Della & Herbert*, a Veterinary Public, in and for said County and State, hereby certify that *James B. Allen*, as President of the Gadsden Corporation, is duly authorized by the map or plat, and who is known to me, to make and adopt the date that being informed of the contents of the said plat, he, as such officer and with full authority exercised the same voluntarily for and as the act of said corporation. Given under my hand and seal this the 15th day of August, 1966.

*Della & Herbert*  
Veterinary Public



GP 1944 359