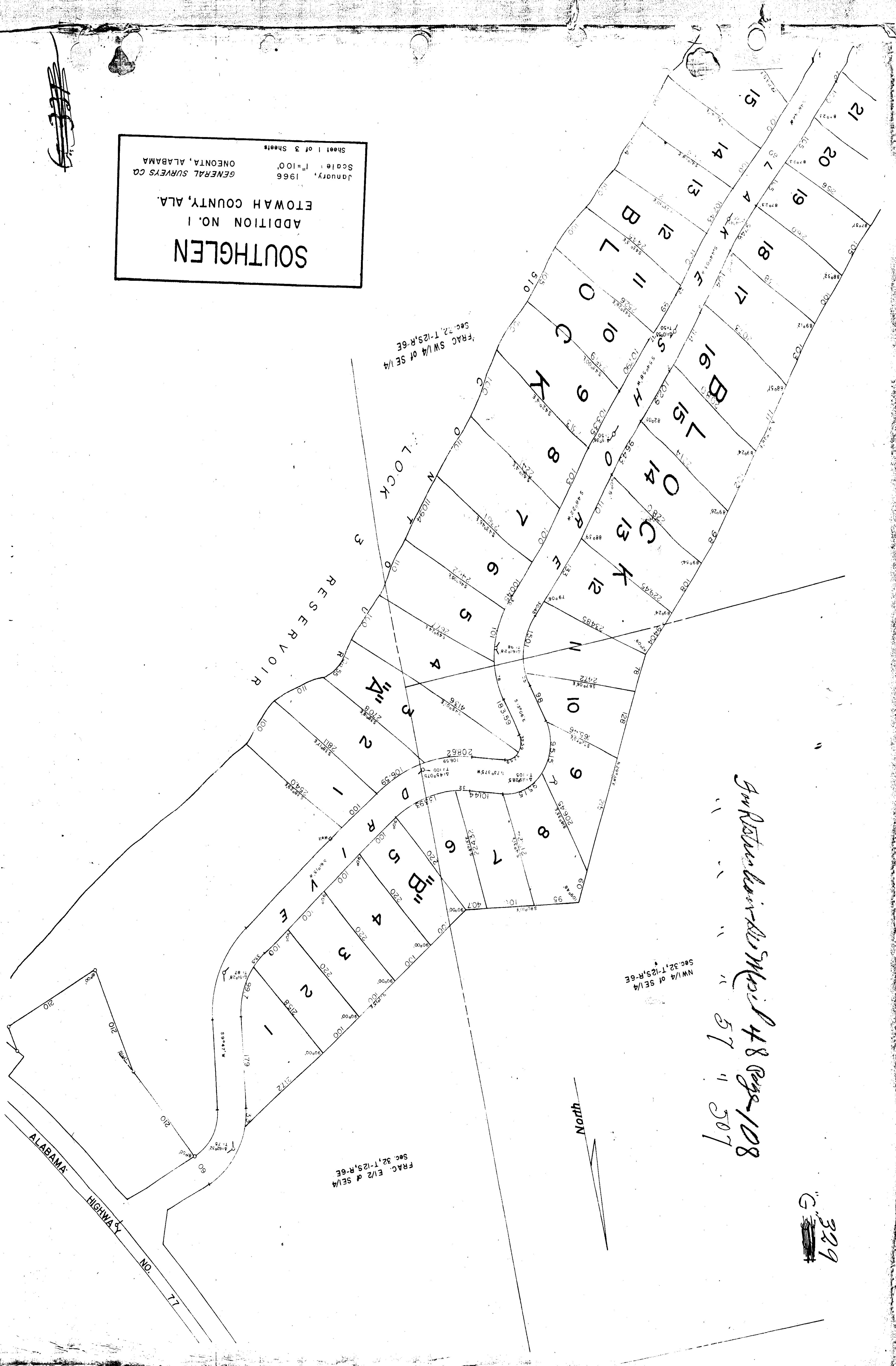


SOUTHGLEN
 ADDITION NO. 1
 ETOWAH COUNTY, ALA.
 GENERAL SURVEYS CO
 ONEONTA, ALABAMA
 January, 1966
 Scale: 1"=100'
 Sheet 1 of 3 Sheets



In Return to Mr. S. H. ...
 48 Regs-108
 57 " 507

FRAC. E 1/2 of SE 1/4
 Sec. 32, T-12S, R-6E

NW 1/4 of SE 1/4
 Sec. 32, T-12S, R-6E

329