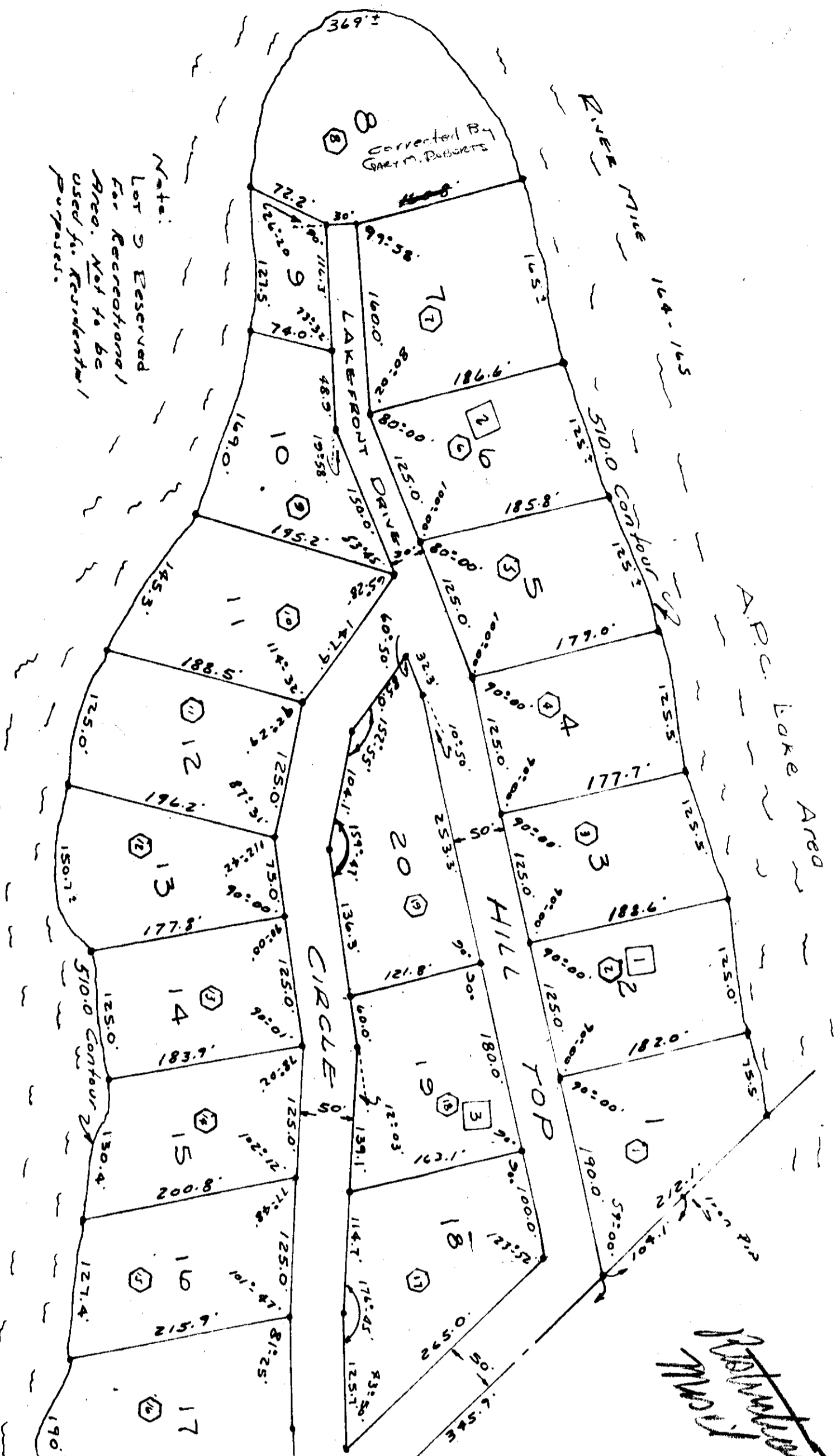
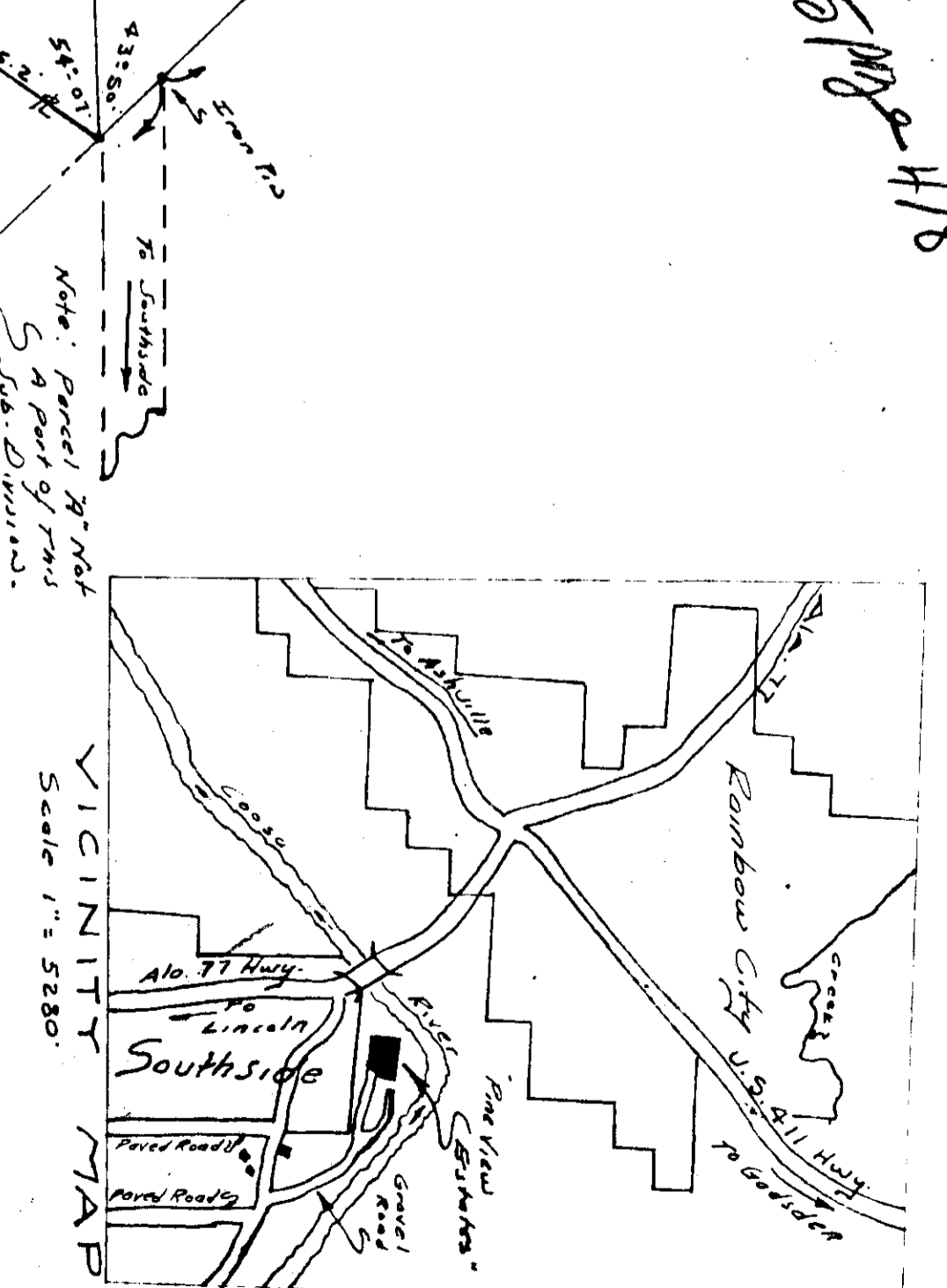


PINE VIEW ESTATES



Revised 10/15/88
 H7B



STATE OF ALABAMA;
 COUNTY OF ETOWAH;
 I, FRANCIS BUNN, A Notary Public in and for the County of Etowah, hereby certify that the following is a true and correct copy of the original instrument filed for record in my office on this 17th day of July, 1985.

STATE OF ALABAMA;
 COUNTY OF ETOWAH;
 I, FRANCIS BUNN, A Notary Public in and for the County of Etowah, hereby certify that the following is a true and correct copy of the original instrument filed for record in my office on this 17th day of July, 1985.

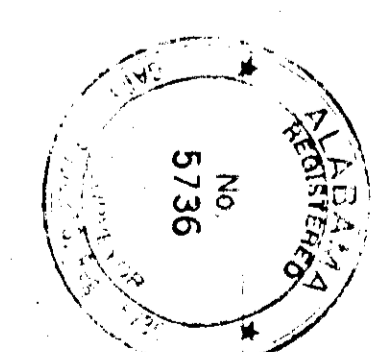
STATE OF ALABAMA;
 COUNTY OF ETOWAH;
 I, FRANCIS BUNN, A Notary Public in and for the County of Etowah, hereby certify that the following is a true and correct copy of the original instrument filed for record in my office on this 17th day of July, 1985.

Francis Bun
 Notary Public Etowah County

M. J. Collins
 M. J. Collins
 M.C. Estates
William Jackson Collett
 William Jackson Collett
Robert Thomas Roberts
 Robert Thomas Roberts

STATE OF ALABAMA;
 COUNTY OF ETOWAH;
 I, GARY M. ROBERTS, a registered Professional Land Surveyor, hereby certify that the foregoing is a true and correct copy of a parcel of land known as "PINE VIEW ESTATES"; that lot corners are marked by iron pins; that bearings and distances are shown in correct relationship to the official Government Survey.

Gary M. Roberts, 691-4576
 Registered Professional Land Surveyor



LEGEND:
 36" Arc of Iron Nail
 72" Iron Nail
 Scale 1" = 100'

RECORDED
 FILED
 1985 JUL 20 10 30 AM
 5736
 Etowah County, Alabama