

THE METROPOLITAN SUBDIVISION

UNIT THREE
Gadsden, Alabama

1.30
1.55

State of Alabama,
County of Etowah.

I, Robert H. Wynn, a registered Professional Land Surveyor of Gadsden, Alabama, hereby certify that the foregoing plot is a true and correct representation of survey and subdivision of portions of the SW 1/4 of SW 1/4 in Section 4 Township 12 South Range 6 East of the Huntsville Meridian, Gadsden, Etowah County, Alabama, as executed by me on this the 6th day of July, 1964.

Paul H. Wynn
No. 155 First Land Surveyor in 1938

State of Alabama,
County of Etowah.

The undersigned, Greater Gadsden Housing Authority, a Corporation, as owner of the lands embraced by the foregoing plat, acting by and through its Executive Director, W. B. Mills, Jr., does hereby rotarily confirm and accept said plat as being true and correct.

This the 22nd day of October, 1964.
Greater Gadsden Housing Authority, By: *W. B. Mills, Jr.*
Executive Director

State of Alabama,
County of Etowah.

I, a Notary Public in and for said State and County, hereby certify that W. B. Mills, Jr., whose name as Executive Director of the Greater Gadsden Housing Authority, a Corporation, is signed to the foregoing plat, is known to me, acting, as I believe, to be me on this day, that being informed of the contents of the conveyance, he, as such officer and with full authority, executed the same voluntarily for and as the act of said Corporation.

Given under my hand and official seal of office, this the 23rd day of October, 1964.

Notary Public

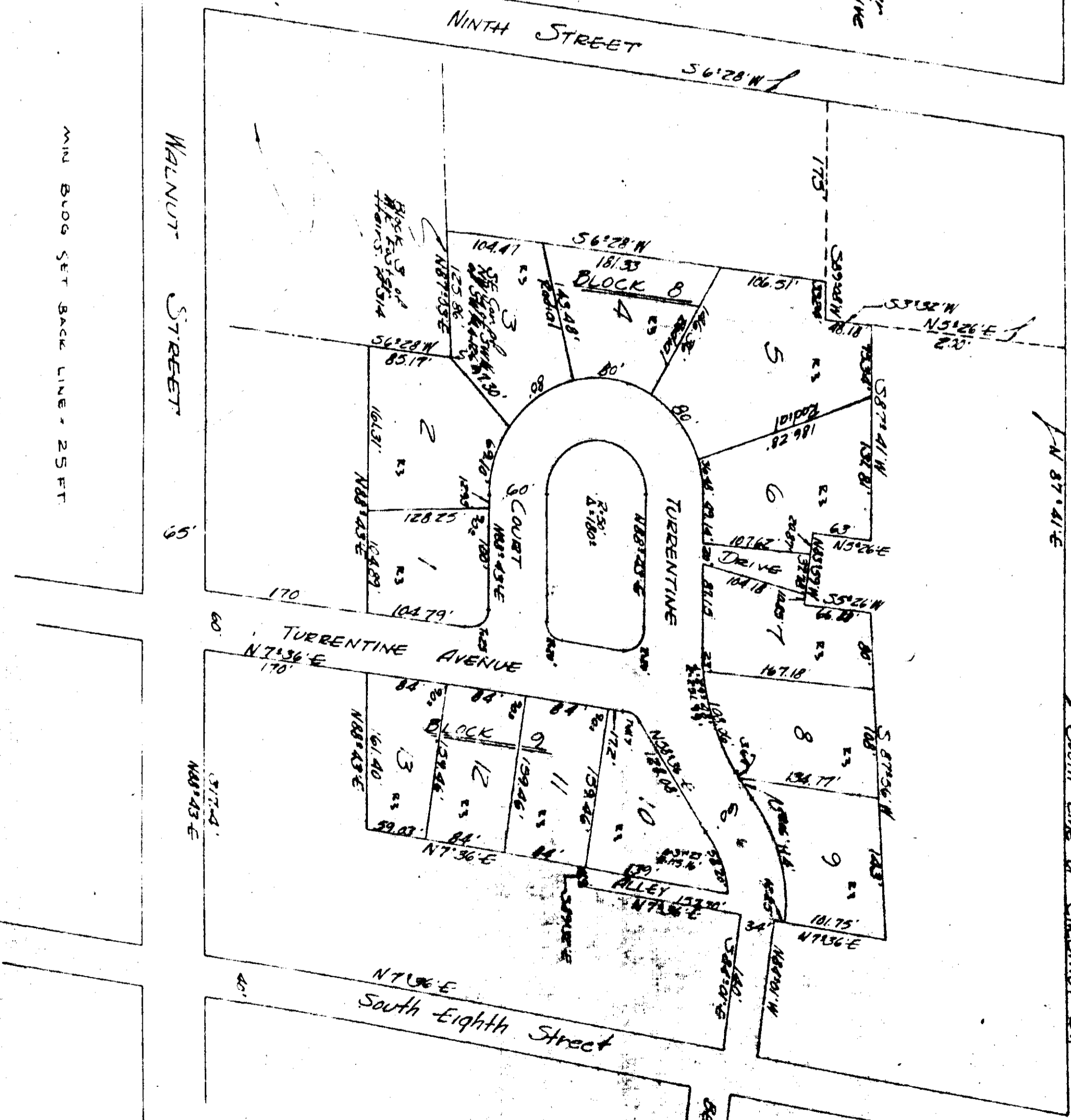
For William Mills, Jr. & wife
A. M. No. 768 (20072)

State of Alabama,
County of Etowah.

We the undersigned, hereby approve the Subdivision represented by the foregoing plat, with exceptions as noted, if any.

For:

City Engineering Department of Gadsden, Alabama
City Planning Board of Gadsden, Alabama
Water Works & Sewer Board of Gadsden, Alabama



THE STATE OF ALABAMA
COUNTY OF ETOWAH
OFFICE OF NOTARY PUBLIC
I, *Paul H. Wynn*, do hereby certify that the foregoing plat is a true and correct representation of survey and subdivision of portions of the SW 1/4 of SW 1/4 in Section 4 Township 12 South Range 6 East of the Huntsville Meridian, Gadsden, Etowah County, Alabama, as executed by me on this the 6th day of July, 1964.

2017
1964

Approved by
Gadsden, Alabama