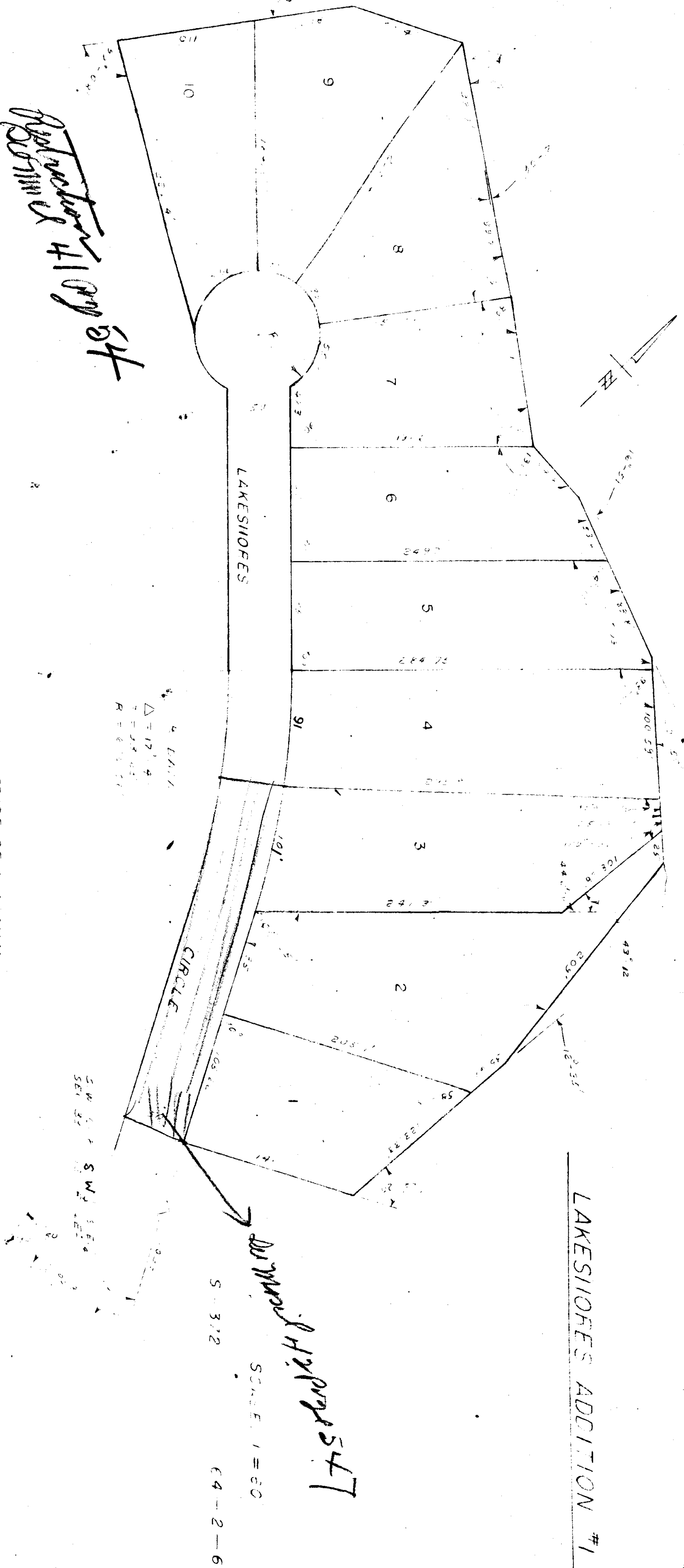


C-237



STATE OF ALABAMA:
COUNTY OF ETOWAH:

I, JAMES T JONES, A REGISTERED ENGINEER AND LAND SURVEYOR OF GADSDEN, ALABAMA, HEREBY CERTIFY THAT THE FOREGOING IS A TRUE AND CORRECT MAP OF PLAT OF THE LAND HEREIN SHOWN, ACCORDING TO MY SURVEY THIS THE 30th DAY OF MARCH, 1964.

JAMES T. JONES, ALABAMA #1 #2271

STATE OF ALABAMA:
COUNTY OF ETOWAH:

WE, GEORGE C. HAWKINS & WIFE, JANE HAWKINS, AND LEONARD L. MCLENDON & WIFE, CARRIE C. MCLENDON, AS OWNERS OF THE LAND HEREIN SHOWN, DO HEREBY RAISE AND ADOPT THE WITHIN MAP AS BEING TRUE AND CORRECT. THIS THE 30th DAY OF March, 1964.

BY: George C Hawkins

GEORGE C. HAWKINS

BY: Jane Hawkins

JANE HAWKINS

BY: Leonard L McLendon

LEONARD L. MCLENDON

CARRIE C. MCLENDON

STATE OF ALABAMA
COUNTY OF ETOWAH:

I, A NOTARY PUBLIC IN AND FOR SAID COUNTY, STATE, HEREBY CERTIFY THAT GEORGE C. HAWKINS & WIFE, JANE HAWKINS, AND LEONARD L. MCLENDON & WIFE, CARRIE C. MCLENDON, AS OWNERS OF THE LAND HEREIN SHOWN, DO HEREBY RAISE AND ADOPT THE WITHIN MAP AS BEING TRUE AND CORRECT. THIS THE 30th DAY OF MARCH, 1964.

WITNESS MY HAND & SEAL THIS THE 3 DAY OF July, 1964.

Charles S. Jenkins
NOTARY PUBLIC

MY COMMISSION EXPIRES Jan 18, 1965

APPROVED: James T Jones
ETOWAH COUNTY
HEALTH DEPARTMENT

BY: CARRIE C. MCLENDON