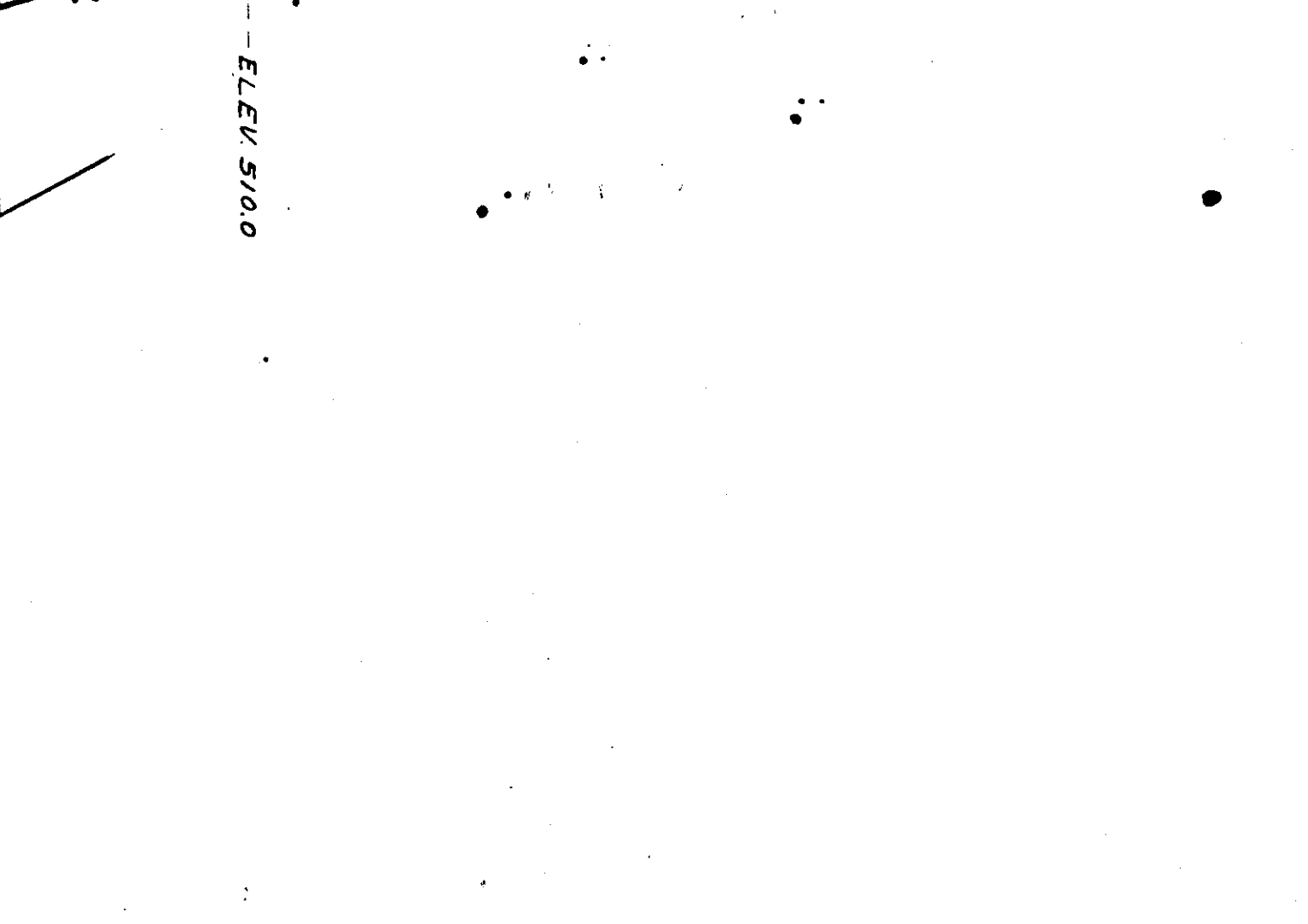
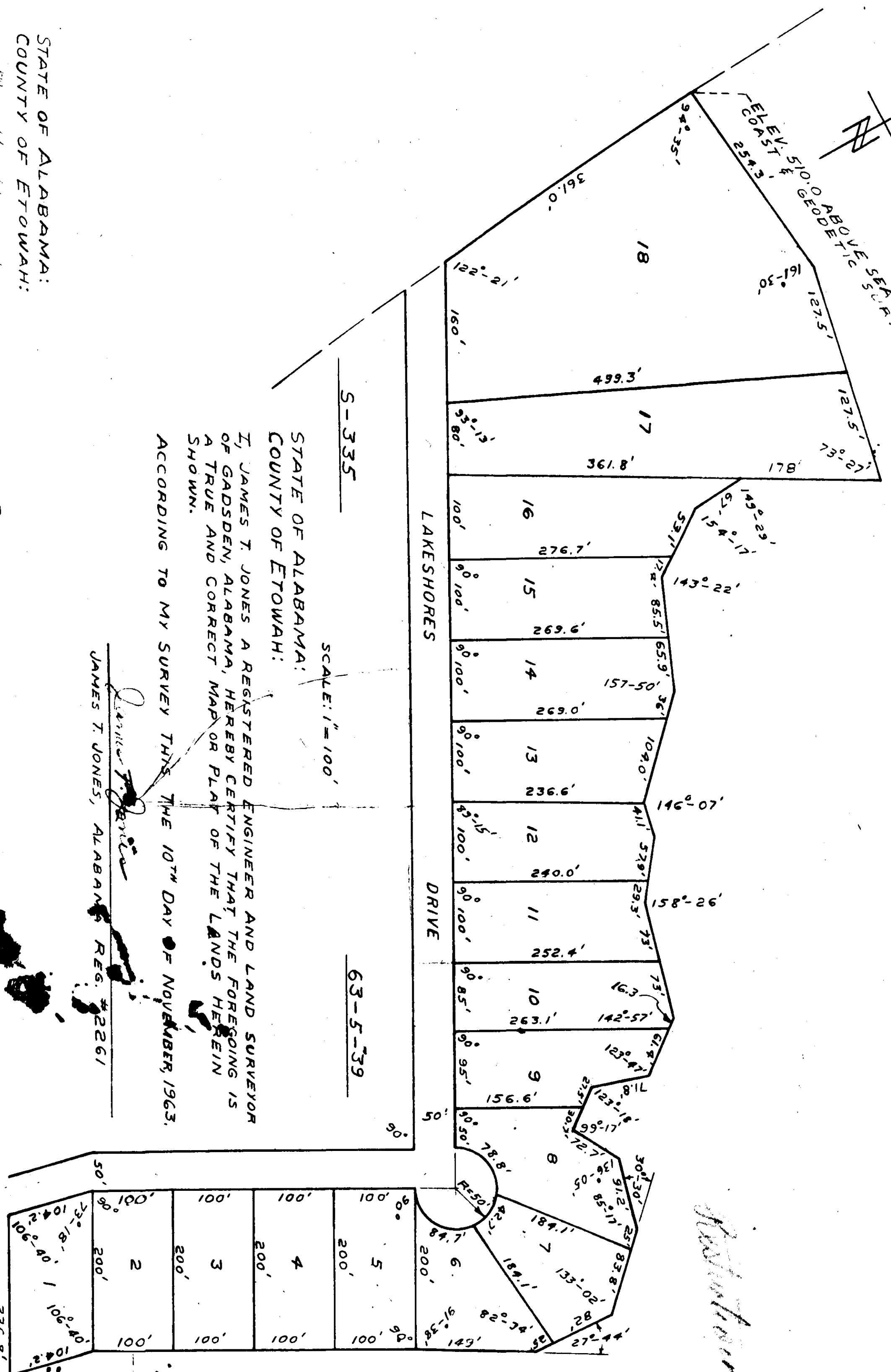


LAKESHORES ESTATES



STATE OF ALABAMA:  
 COUNTY OF ETOWAH:  
 I, JAMES T. JONES, A REGISTERED ENGINEER AND LAND SURVEYOR OF GADSDEN, ALABAMA, HEREBY CERTIFY THAT THE FOREGOING IS A TRUE AND CORRECT MAP OR PLAN OF THE LANDS HEREIN SHOWN.  
 ACCORDING TO MY SURVEY THIS THE 10<sup>TH</sup> DAY OF NOVEMBER, 1963.

*James T. Jones*  
 JAMES T. JONES, ALABAMA REG. #2261

STATE OF ALABAMA:  
 COUNTY OF ETOWAH:  
 I, *W. H. Howell*, A NOTARY PUBLIC IN AND FOR SAID COUNTY & STATE, HEREBY CERTIFY THAT LUVERNE LASSETER, BARNA HOWELL LASSETER & WILLIAM FRANK LASSETER AS OWNERS, HAVE SIGNED THE WITHIN MAP, AND WHO ARE KNOWN TO ME, ACKNOWLEDGED BEFORE ME ON THIS DATE, THAT BEING INFORMED OF THE CONTENTS, THEY EXECUTED THE SAME VOLUNTARILY ON THE DAY THE SAME BEARS DATE.

STATE OF ALABAMA:  
 COUNTY OF ETOWAH:  
 WE, LUVERNE LASSETER, BARNA HOWELL LASSETER AND WILLIAM FRANK LASSETER, AS OWNERS OF THE LANDS HEREIN SHOWN, DO HEREBY RATIFY AND ADOPT THE WITHIN MAP AS BEING TRUE AND CORRECT.

WITNESS MY HAND & SEAL THIS THE 13<sup>TH</sup> DAY OF NOVEMBER, 1963.

THIS THE 13<sup>TH</sup> DAY OF NOVEMBER, 1963.

BY: *Luverne Lassetter*  
 LUVERNE LASSETER

BY: *Barna Howell Lassetter*  
 BARNA HOWELL LASSETER

BY: *William Frank Lassetter*  
 WILLIAM FRANK LASSETER

*W. H. Howell*  
 NOTARY PUBLIC

MY COMMISSION EXPIRES Sept 7, 1964

APPROVED: *William R. Sherry*  
 ETOWAH COUNTY  
 HEALTH DEPARTMENT

1-215

*Reduction from 341 Pgs - 33*

NOV 14 - 1963

11/26/63

20  
 74  
 31