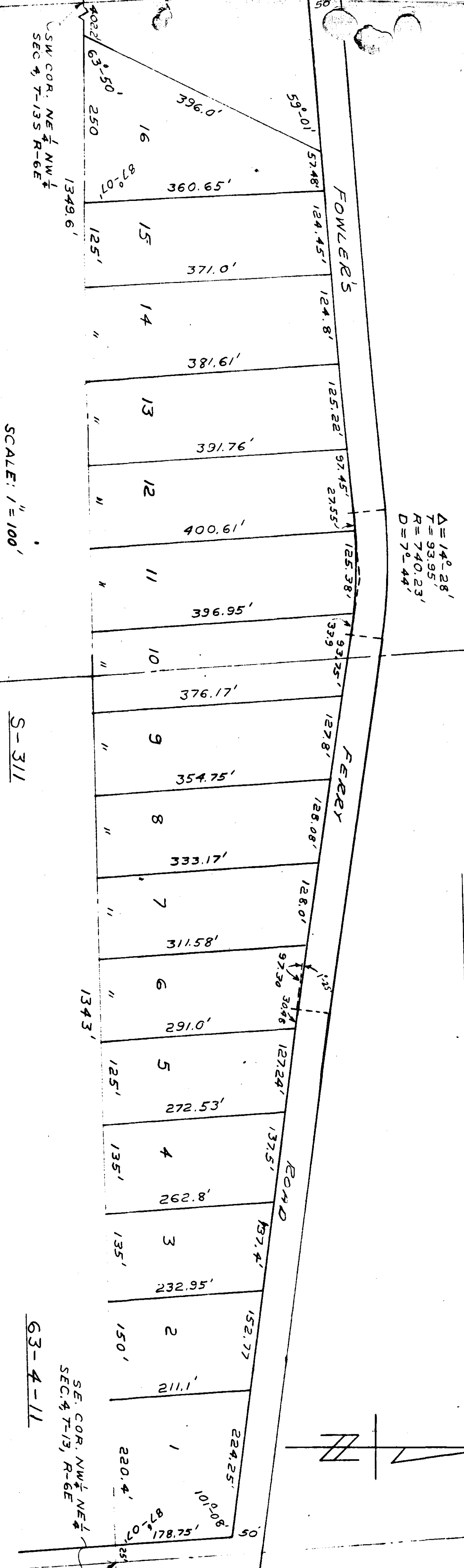


R. T. WILKINS, F. O. C. P. L. P. 6 213-A IN DEED BOOK 1326 PAGE 531

LASSETTE ADDITION
TO SOUTHSIDE, ALABAMA

11-21-63



SCALE: 1" = 100'

63-4-11

STATE OF ALABAMA
COUNTY OF ETOWAH

I, JAMES T. JONES, A REGISTERED ENGINEER AND LAND SURVEYOR OF GADSDEN, ALABAMA, HEREBY CERTIFY THAT THE FOREGOING IS A TRUE AND CORRECT MAP OR PLAT OF THE LANDS HEREIN SHOWN, ACCORDING TO MY SURVEY THIS THE 10th DAY OF

SEPTEMBER, 1963

James T. Jones
JAMES T. JONES (ALABAMA REG. # 2261)

STATE OF ALABAMA
COUNTY OF ETOWAH:

I, *Mac Withard*, A NOTARY PUBLIC IN AND FOR SAID COUNTY & STATE, HEREBY CERTIFY THAT LUCIENE LASSETTE, BERN HONELL LASSETTE & WILLIAM FERRIS LASSETTE AS OWNERS, HAVE SIGNED THE WITHIN MAP, AND WHO ARE KNOWN TO ME, THAT BEING ACKNOWLEDGED BEFORE ME ON THIS DATE, EXECUTED THE SAME VOLUNTARILY, ON THE DAY THE SAME BECAME DATES.

WITNESS MY HAND & SEAL THIS THE 13th DAY OF NOVEMBER, 1963.

Mac Withard
NOTARY PUBLIC

MY COMMISSION EXPIRES SEPT 2, 1964.

STATE OF ALABAMA
COUNTY OF ETOWAH:

WE, LUCIENE LASSETTE, BERN HONELL LASSETTE AND WILLIAM FERRIS LASSETTE, AS OWNERS OF THE LANDS HEREIN SHOWN, DO HEREBY RATIFY AND ADOPT THE WITHIN MAP AS BEING TRUE AND CORRECT.

THIS THE 13th DAY OF NOVEMBER, 1963.

BY: *Luciene Lassette*
LUCIENE LASSETTE
BY: *Bern Honell Lassette*
BERN HONELL LASSETTE
BY: *William Ferris Lassette*
WILLIAM FERRIS LASSETTE

APPROVED: *Robert R. Young*
ETOWAH COUNTY
HEALTH DEPARTMENT

NOV 14 1963
11/19/63