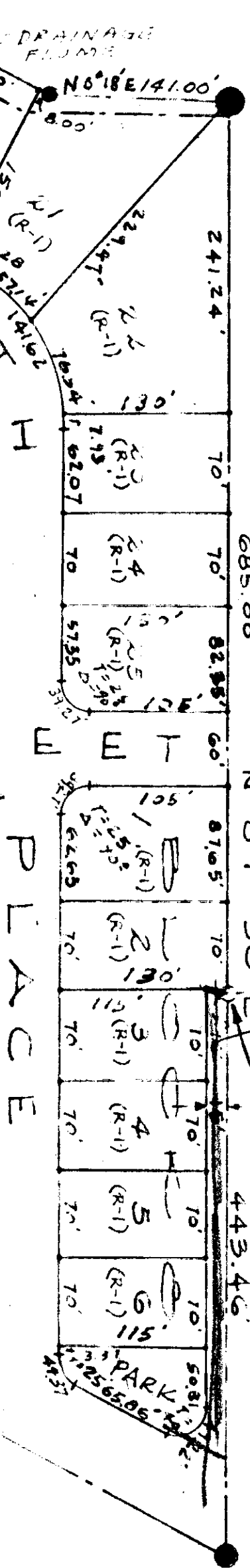


Arrowhead 43 page 103

N.W. COR. of NW 1/4 of NW 1/4 of SEC. 3
TWP. 12 SOUTH & RANGE 6 EAST of
HUNTSVILLE MERIDIAN, ETOWAH CO., ALA.

G-199



NOTE:
EASEMENTS 10 FT. IN WIDTH, 5 FT. EACH
SIDE OF & OF CONCRETE DRAINAGE FLUMES
ARE RESERVED WHERE SAID FLUMES
EXIST IN BLOCKS 3, 6 AND 7.
ALL LOT CORNERS MARKED WITH
IRON PINS.

THE STATE OF ALABAMA
COUNTY OF ETOWAH
I, Ernest C. Hofferebert, a registered civil engineer and
land surveyor of Etowah County, Alabama, hereby certify
that the foregoing map or plat, and that the same is true
and correct as herein represented.
THIS THE 8TH DAY OF OCTOBER, 1962.

Ernest C. Hofferebert
ALR. REG. NO. 12640

NORTHSIDE SUBDIVISION

An addition to Gadsden, Alabama, embracing
portions of the NW 1/4 of the NW 1/4 of Section 3
and portions of the NE 1/4 of the NE 1/4 of the SE 1/4
of the NE 1/4 & the SW 1/4 Range 6 East of the
Huntsville Meridian, Etowah County, Alabama.

STATE OF ALABAMA:
COUNTY OF ETOWAH:
THE UNDERSIGNED, GREATER GADSDEN HOUSING AUTHORITY
A CORPORATION, AS OWNER OF THE LANDS EMBRACED
BY THE FOREGOING PLAT, ACTING BY AND THROUGH
ITS EXECUTIVE DIRECTOR, WALTER B. MILLS, JR.,
DOES HEREBY RATIFY, CONFIRM AND ADOPT SAID
PLAT AS BEING TRUE AND CORRECT.
THIS THE 8TH DAY OF OCTOBER, 1962.
GREATER GADSDEN HOUSING AUTHORITY,
BY: WALTER B. MILLS, JR., EXECUTIVE DIRECTOR.

STATE OF ALABAMA:
COUNTY OF ETOWAH:
I, SUR. WALLMARK, A NOTARY PUBLIC IN AND FOR
SAID STATE AND COUNTY HEREBY CERTIFY THAT
WALTER B. MILLS, JR., WHOSE NAME AS EXECUTIVE
DIRECTOR OF THE GREATER GADSDEN HOUSING AUTHORITY,
A CORPORATION, IS SIGNED TO THE FOREGOING
CONVEYANCE, AND WHO IS KNOWN TO ME,
ACKNOWLEDGED BEFORE ME ON THIS DAY THAT
BEING INFORMED OF THE CONTENTS OF THE
CONVEYANCE, HE, AS SUCH OFFICER, AND WITH
FULL AUTHORITY, EXECUTED THE SAME
VOLUNTARILY FOR AND AS THE ACT OF SAID
CORPORATION.
GIVEN UNDER MY HAND AND OFFICIAL SEAL OF
OFFICE, THIS THE 8TH DAY OF OCTOBER, 1962.

STATE OF ALABAMA:
COUNTY OF ETOWAH:
WE, THE UNDERSIGNED HEREBY APPROVE THE SUBDIVISION REPRESENTED
BY THE FOREGOING PLAT, WITH EXCEPTIONS AS NOTED, IF ANY.
FOR:
CITY ENGINEERING DEPT. OF GADSDEN, Ala. City Eng. Dept.
CITY PLANNING BOARD OF GADSDEN, Ala. City Plan. Bd.
WATER WORKS & PARKS BOARD
OF GADSDEN, Ala. Water & Parks Bd.

Ernest C. Hofferebert
CITY ENGINEER DATE 10/10/62
Ernest C. Hofferebert
SEC. ENGINEER DATE 10/10/62
Ernest C. Hofferebert
SUPERINTENDENT DATE 10/10/62

ARROWHEAD, INC.
ENGINEERS SURVEYORS & PLANNING CONSULTANTS
PROFESSIONAL AND BUSINESS OFFICES
GADSDEN, ALABAMA

NORTHSIDE SUBDIVISION

DATE: 8 OCT 62
DRAWN: ECH
CHECKED: [Signature]
SCALE: 1" = 100'
SHEET NO. 10 OF 10