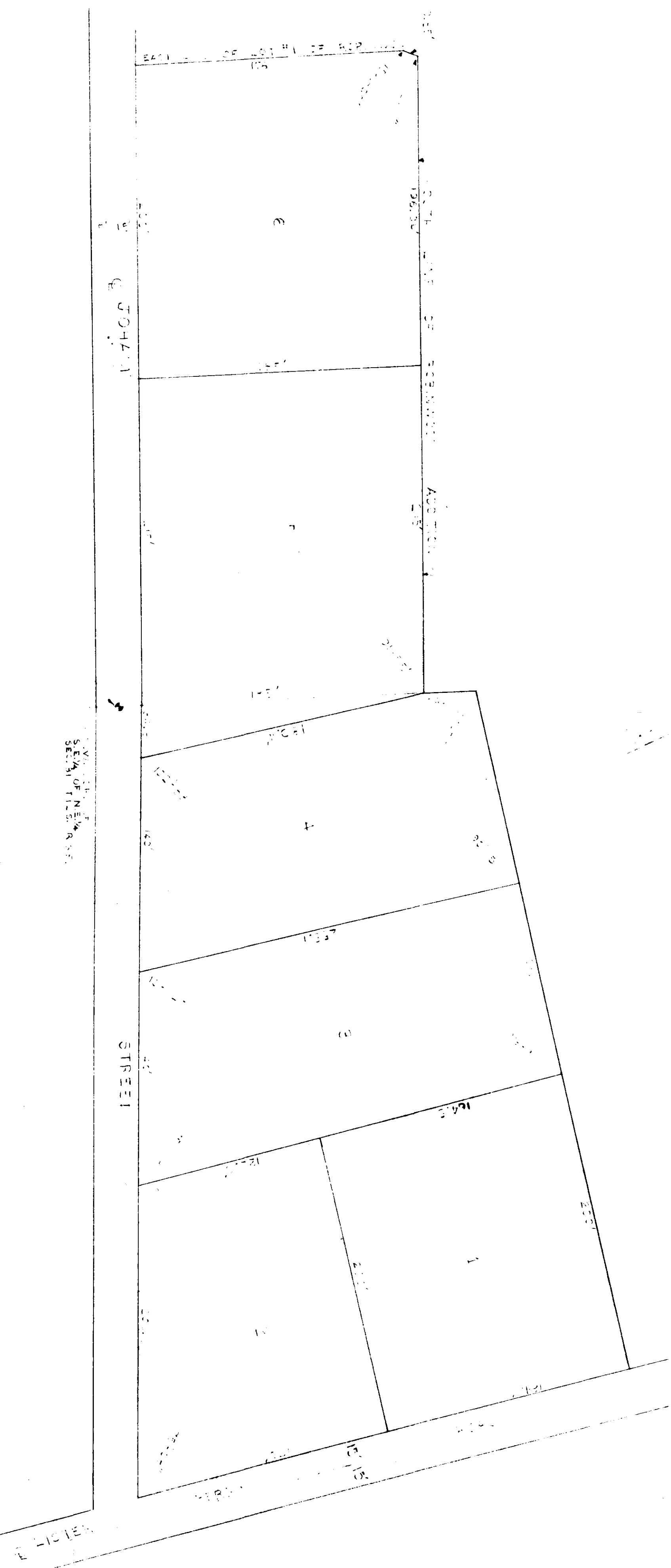


Gr-183

JOHNSON ALLIETHI

NEED NOT BE CONCERNED IN THE MATTER OF THE
REVIEW OF THE STATE AND THE FEDERAL
COURTS IN ANY OF THE COURTS OF THE NEW
JERSEY IN THE MATTER OF THE REVIEW OF
THE DECISIONS OF THE BOARD OF
VEGETATION IN ANY AND ALL MATTERS
IN THE STATE OF NEW JERSEY.



STATE OF NEW JERSEY
COUNTY OF MIDDLESEX
IN SENATE,
January 20, 1915.
REPORT OF THE COMMISSIONERS OF THE LAND OFFICE
IN RESPONSE TO A RESOLUTION PASSED BY THE SENATE
ON JANUARY 14, 1915, RELATIVE TO THE
LANDS BELONGING TO THE STATE OF NEW JERSEY
AND THE STATE OF PENNSYLVANIA.

WE HEREBY CERTIFY THAT THE
LANDS BELONGING TO THE STATE OF NEW JERSEY
AND THE STATE OF PENNSYLVANIA
AS SHOWN ON THE PLAT
HEREIN ARE CORRECTLY
DESCRIBED AND
THEY ARE THE 26TH DAY OF FEBRUARY, 1915.

MARSHALL C. JOHNSON
ROBERT C. JOHNSON
JAMES C. JOHNSON
JAMES C. JOHNSON

THE STATE OF NEW JERSEY
COUNTY OF MIDDLESEX
IN SENATE,
February 1915
MIDDLESEX COUNTY
Except Lot 6

381
1155 A
1155 B
9th MAR 2
1155
1155