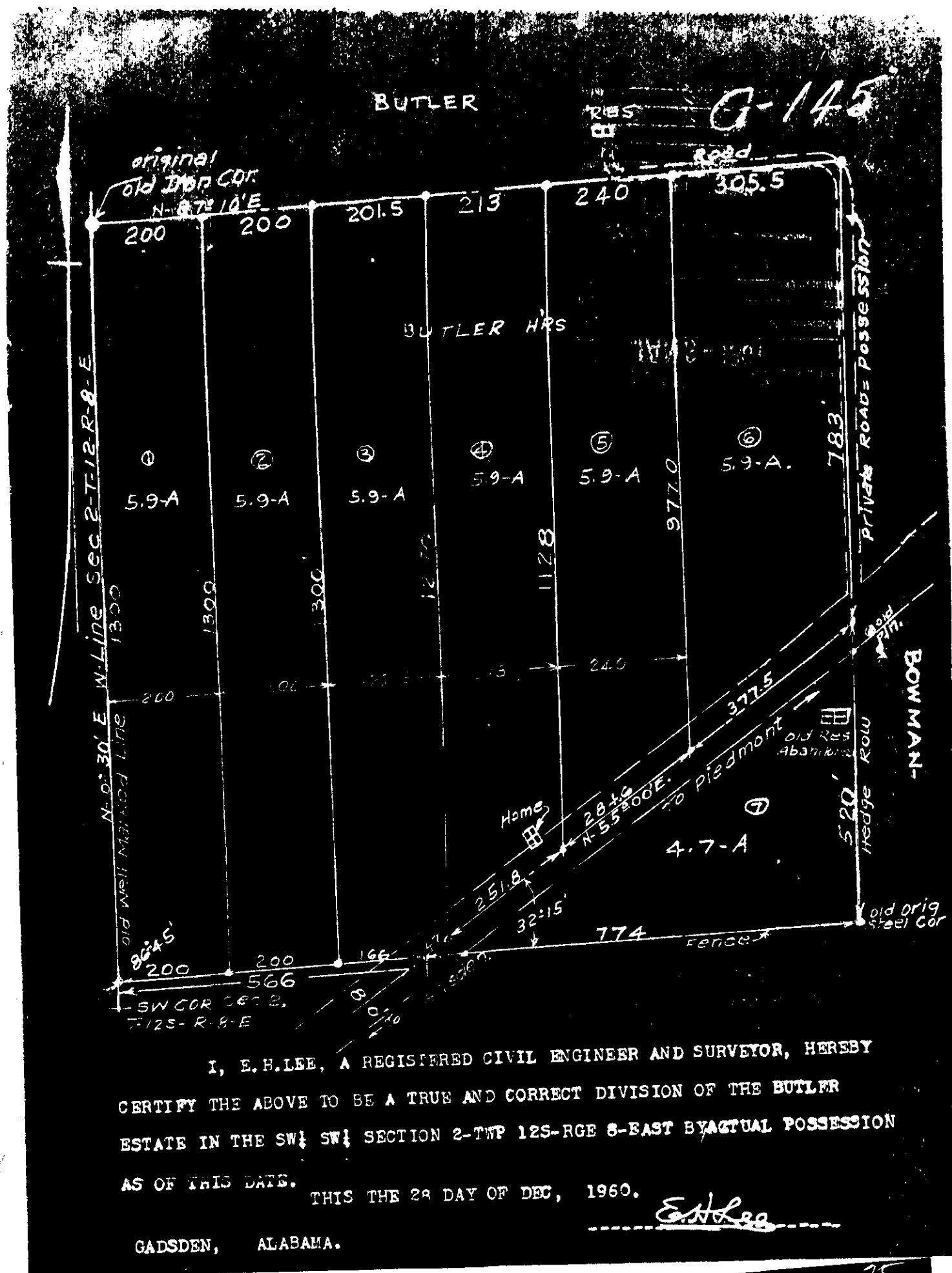


G-145



THE STATE OF ALABAMA
ETOWAH COUNTY

OFFICE OF PROBATE JUDGE

I hereby certify that this instrument was filed in office for record on the 29 day of December, 1960 at 11 o'clock A. M. and was duly recorded on the 12 day of January, 1961.

Wiley A. Johnson
Judge of Probate, Etowah County, Ala.

Cert. Fee	25
Mfg. Tax	
Deed Tax	
Rec. Fee	37
Total	62