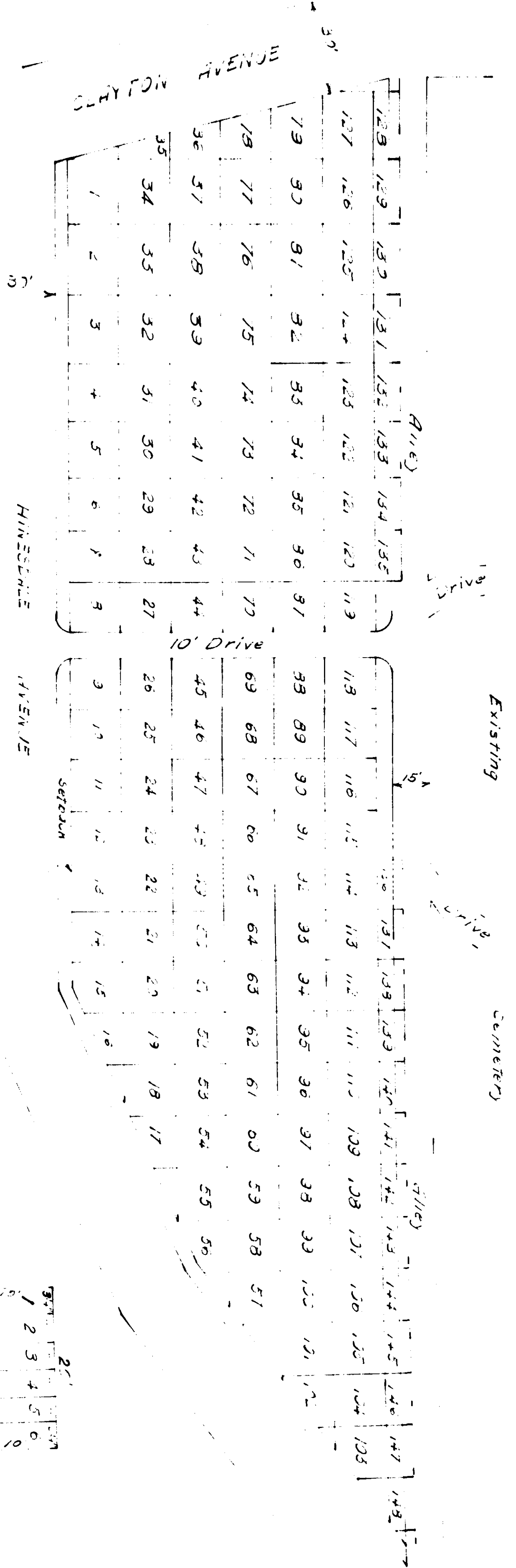


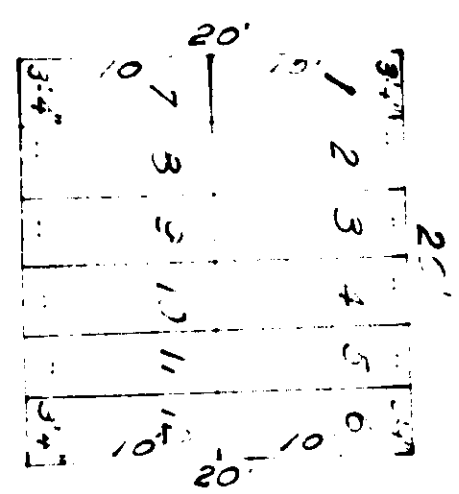
ALCOON'S ADDITION TO  
CLAYTON'S CEMETERY



I, ROBERT W. ROBERTS a registered Engineer of Jackson Mich. hereby certify this to be true & correct copy of subdivision into 27x20' cemetery lots of ALCOON'S ADDITION TO CLAYTON'S CEMETERY as shown on the plan surveyed by me this 15th day of Sept. 1900. My commission expires with this date.

Scale 1"=50.00'

W. L. WRIGHT, M. E.



GRAVESPACE LAYOUT  
ALL LOTS SIMILAR

SEP 30 1900

1900

25

10

G-131