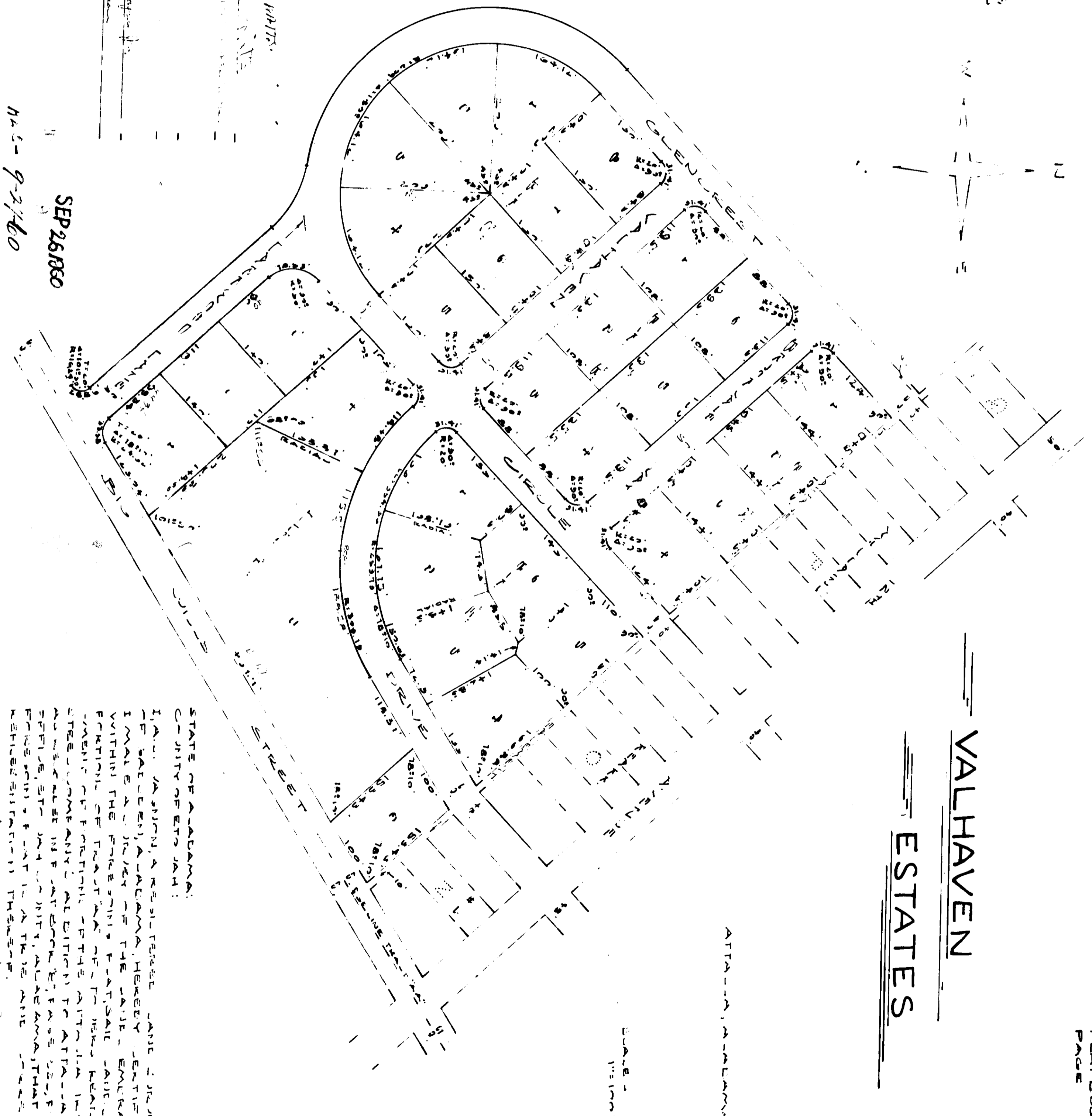
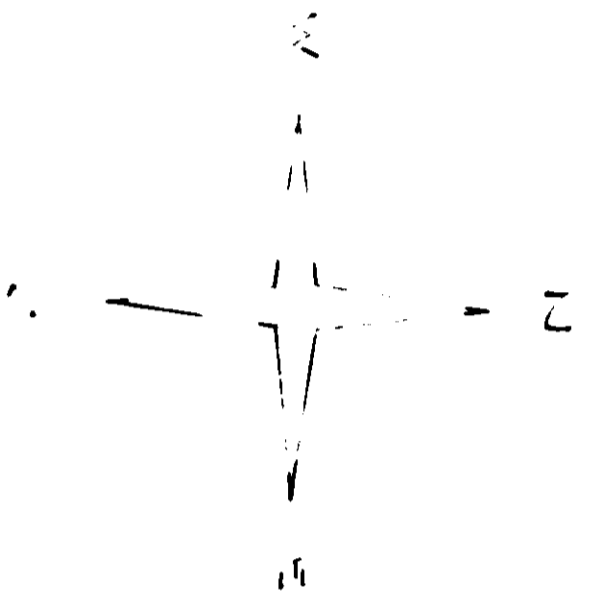


VALHAVEN ESTATES



STATE OF ALABAMA: COUNTY OF ETOWAH: THE JUDICIAL DISTRICT OF THE COUNTY AND VICE, SEBASTIAN, Esq., Clerk of the said County, do hereby certify that the following is a true and correct copy of the plat of the Valhaven Estates, as shown to me by the owner thereof, to-wit: E. M. Giles, and that the same is a true and correct copy of the original plat on file in the office of the Clerk of the said County, to-wit: E. M. Giles, on the 6th day of February, 1960.

*E. M. Giles*  
County Clerk

STATE OF ALABAMA: COUNTY OF ETOWAH:

E. M. GILES, Plaintiff, vs. JAMES McALPIN, Defendant. This the 6th day of February, 1960.

*E. M. Giles*  
Plaintiff

THE PARTS:

PLAT OF VALHAVEN ESTATES, AS SHOWN TO ME BY THE OWNER THEREOF, TO-WIT: E. M. GILES, AND THAT THE SAME IS A TRUE AND CORRECT COPY OF THE ORIGINAL PLAT ON FILE IN THE OFFICE OF THE CLERK OF THE SAID COUNTY, TO-WIT: E. M. GILES, ON THE 6TH DAY OF FEBRUARY, 1960.

SEP 26 1960

MS-9-27-60

25  
233

STATE OF ALABAMA: COUNTY OF ETOWAH:

I, JAMES McALPIN, do hereby certify that the following is a true and correct copy of the plat of the Valhaven Estates, as shown to me by the owner thereof, to-wit: E. M. Giles, and that the same is a true and correct copy of the original plat on file in the office of the Clerk of the said County, to-wit: E. M. Giles, on the 6th day of February, 1960.

*J. McAlpin*  
Defendant