

G-93

E. W. ABNEY ADDITION No 1  
TO THE CITY OF ATTALLA  
JULY 8, 1958

Being a part of the S.W. 1/4  
of the N.W. 1/4 and a part  
of the N.W. 1/4 of the S.W. 1/4 of  
sec. 9-7125-R5E, ETOWAH CO.  
Alabama.  
Also a part of Lot 6 of the  
D.T. Gaines second subdivision.

STATE OF ALABAMA  
ETOWAH COUNTY

I, T. L. Simmons, a Notary Public in aforesaid County  
and State hereby certify that the persons whose names  
are signed to the foregoing map or plat and who are known  
to me, acknowledged before me on this day that being  
informed of the contents of said map or plat, they executed  
the same voluntarily.

Given under my hand & seal this 8th day of July, 1958.  
T. L. Simmons  
Notary Public

STATE OF ALABAMA  
ETOWAH COUNTY

I, T. L. Simmons, a registered Land Surveyor, hereby  
certify that this is a true and correct map or plat  
of the lands contained herein as surveyed and platted  
by me. All corners are marked with steel pipe.

This the 8th day of July, 1958.  
T. L. Simmons  
Reg. No 840

We, the owners of the property described, hereby  
ratify and adopt this map or plat as being true  
and correct.

This the 8th day of July, 1958.

T. L. Simmons  
Registered Land Surveyor

De 4 sign in  
Betsy O. Wagoner

Designed by T. L. Simmons

Scale: 1" = 50'

Streets shown hereon, if not previously dedicated are  
hereby tendered for dedication to public use. Easements  
for utilities are reserved as shown hereon.

Approved for the Attalla City Planning Commission.

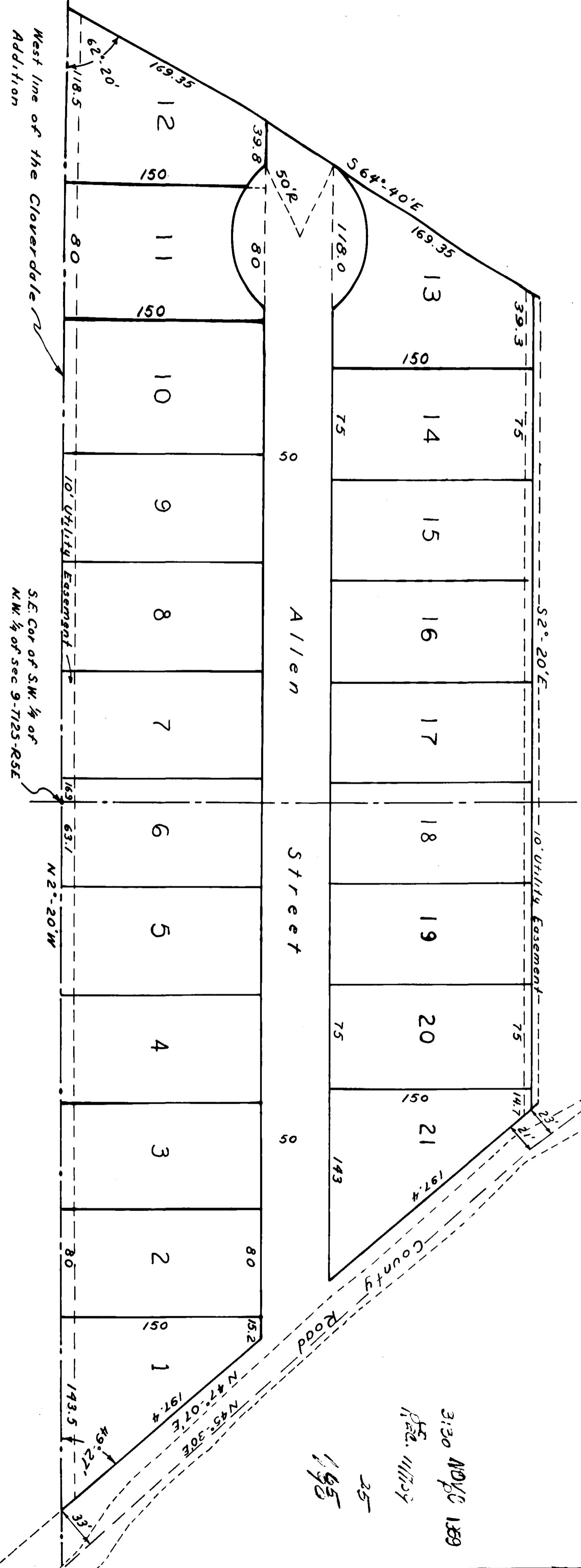
W. L. Wagoner  
Chairman

3:30 NOV 13 1958

1958 11/13/58

25

1958



West line of the Cloverdale  
Addition

S.E. Cor of S.W. 1/4 of  
N.W. 1/4 of sec 9-7125-R5E