

F-405

SHEET 3 OF 3

F 405

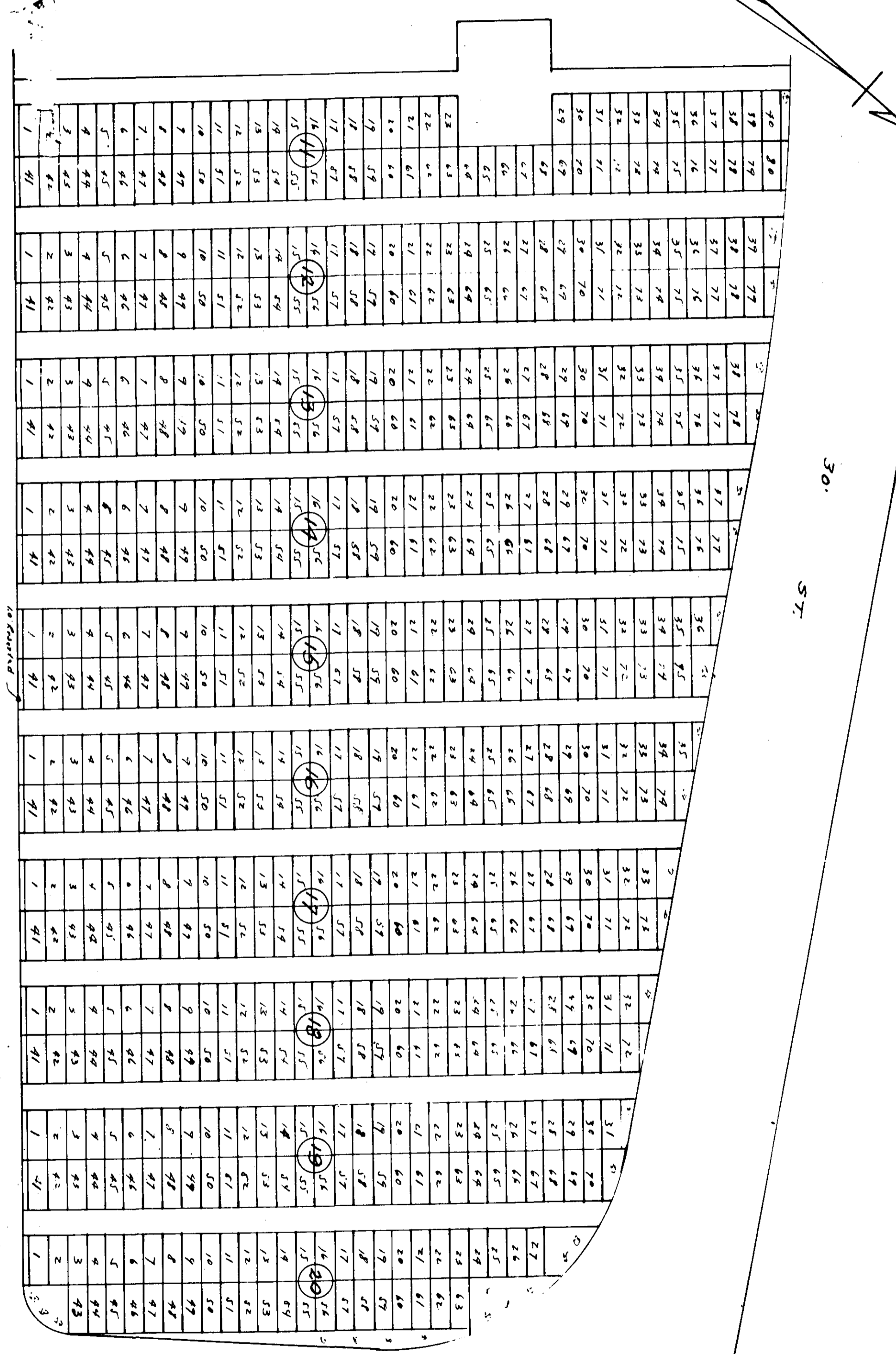
STATE OF ALABAMA
 COUNTY OF STONEMAN
 I, R. B. GIBSON, a Registered
 Engineer and Surveyor in said county, do hereby certify that
 this is a true and correct plat of Section 29, of
 one half Section 28, as surveyed and plotted
 by me this 14th day of June 1956.

Witness my hand and seal
 this 14th day of June 1956.

R. B. GIBSON
 Registered Professional Engineer
 No. 14, 430.

This plat accepted, approved and ratified by Resolution
 Passed at the Regular Meeting of the City Council of
 the City of Attalla, held on May 6, 1957.

CITY OF ATTALLA, ALA.
 Mayor: Walter L. Simpson
 Attest: Russ K. ...
 City Clerk



U.S. 11 ← → U.S. 117
 75 CHATTAHOOGA

20' ST.

30' ST.

30' ST.

Right-of-Way Line of Alabama Power Co. Transmission Line 3

CHATTANOOGA BUSINESS RECORDS CORPORATION