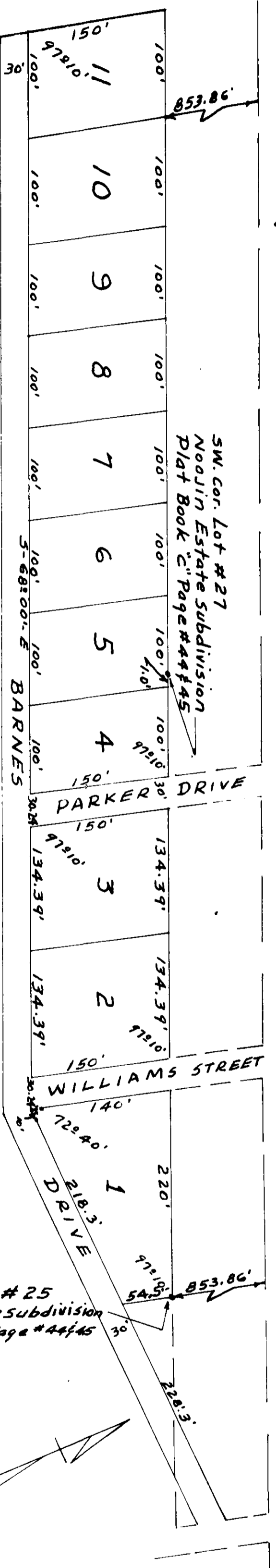


# R. U. BARNES, ADDITION TO HOKES BLUFF

F-361

Scale: 1 in. = 100 ft.

← To Gadsden — GADSDEN — PIEDMONT HIGHWAY — To Piedmont →



STATE OF ALABAMA  
COUNTY OF STONAH

I, R. U. Barnes, a Notary Public in and for said County and State, hereby certify that the foregoing map or plat, do hereby verify, confirm, and adopt the same as being true and correct.

This the 22 day of June, 1956.

R. U. Barnes  
Notary Public  
LUCILE E. BARNES

STATE OF ALABAMA  
COUNTY OF STONAH

I, P. H. Ryan, a registered land surveyor, of Gadsden, Alabama, hereby certify that this is a true and correct map or plat of the lands herein surveyed by me.

This the 16 th. day of June, 1956

P. H. Ryan  
Reg. No. 2556

STATE OF ALABAMA  
COUNTY OF STONAH

I, J. C. Starnes, a Notary Public in and for said County and State, hereby certify that R. U. Barnes, and Lucile B. Barnes, owners, whose names are signed to the foregoing conveyance, and who are known to me, executed before me on this day, that being in presence of the competent witnesses, they executed the same voluntarily on the day the same bears date.

Given under my hand and seal this the 22 day of June, 1956.

J. C. Starnes  
Notary Public

1818 JUN 25 1956  
F-361  
RECORDED. 6/26/56

25  
95  
120