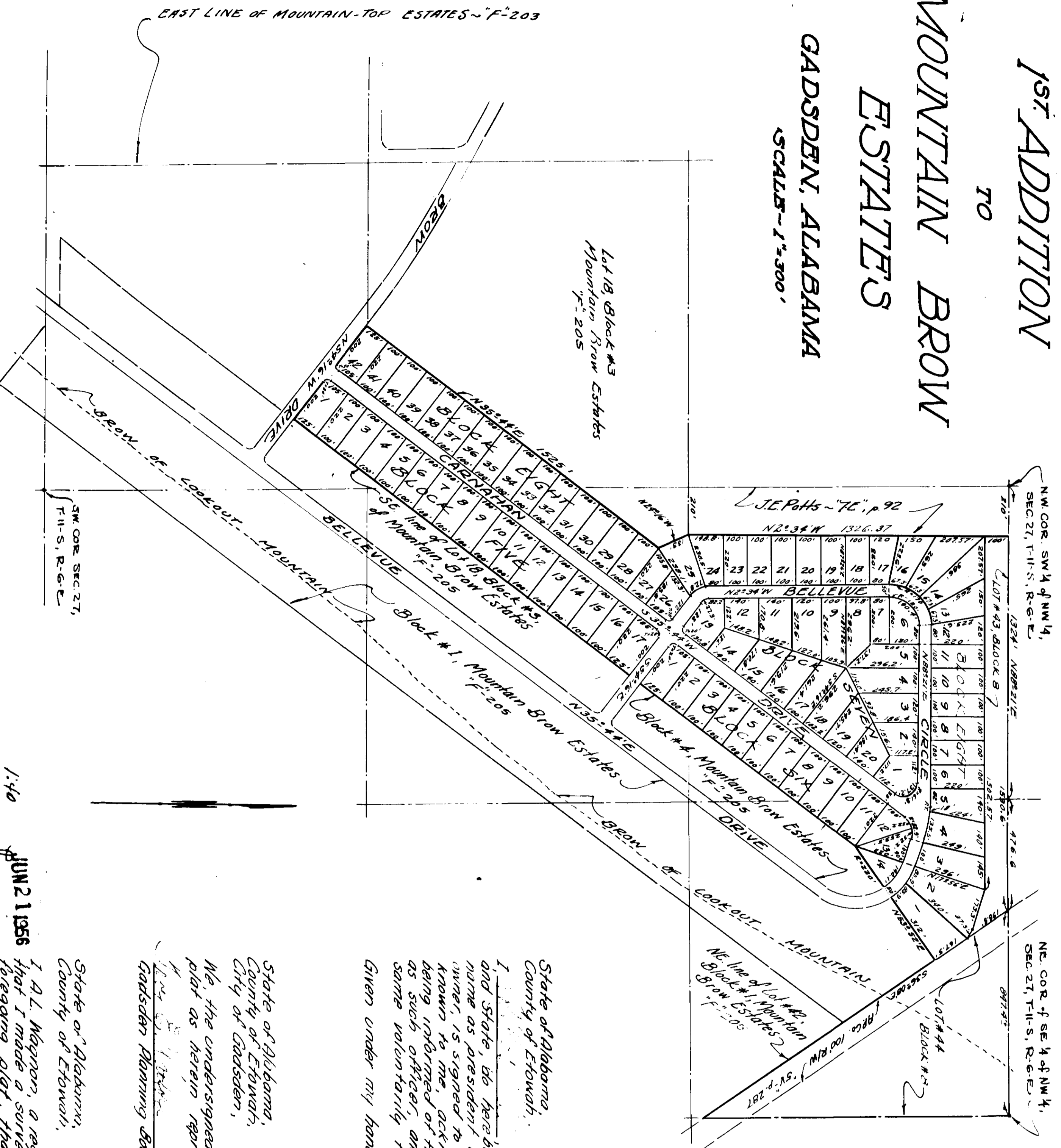


*For Information See Map 16 Fig - 285*

F-359

# 1ST ADDITION TO MOUNTAIN BROW ESTATES

GADSDEN, ALABAMA  
SCALES - 1" = 300'



State of Alabama,  
County of Etowah,

The undersigned, The Gadsden Corporation, as owners of the lands embraced in the within plat, acting by and through its president, Gladys Grazier, does hereby ratify, confirm, and adopt the said plat as being true and correct.

This the 11 day of July, 1954

The Gadsden Corporation  
by \_\_\_\_\_  
President

Attest \_\_\_\_\_  
Secretary

State of Alabama,  
County of Etowah,

I, \_\_\_\_\_, a Notary Public in and for said County and State, do hereby certify that Gladys Grazier, whose name as president of The Gadsden Corporation, a corporation, (owner, is signed to the foregoing conveyance, and who is known to me, acknowledged before me on this day, that being informed of the contents of the conveyance, she as such officer, and with full authority, executed the same voluntarily for and as the act of said corporation.

Given under my hand this 11 day of July, 1954.

\_\_\_\_\_  
Notary Public

State of Alabama,  
County of Etowah,  
City of Gadsden,

We, the undersigned, hereby approve the subdivision and plat as herein represented:

\_\_\_\_\_  
Date \_\_\_\_\_  
City Engineer

State of Alabama,  
County of Etowah,

I, A. L. Wagner, a registered land surveyor, hereby certify that I made a survey of the lands embraced within the foregoing plat, that the same is true and correct as herein represented.

This the 31 day of July, 1954

\_\_\_\_\_  
A. L. Wagner  
Reg. L.S. # 1626

1:40  
Reviewed of 2/2/56

235

5405  
2.45

EAST LINE OF MOUNTAIN-TOP ESTATES - F-203