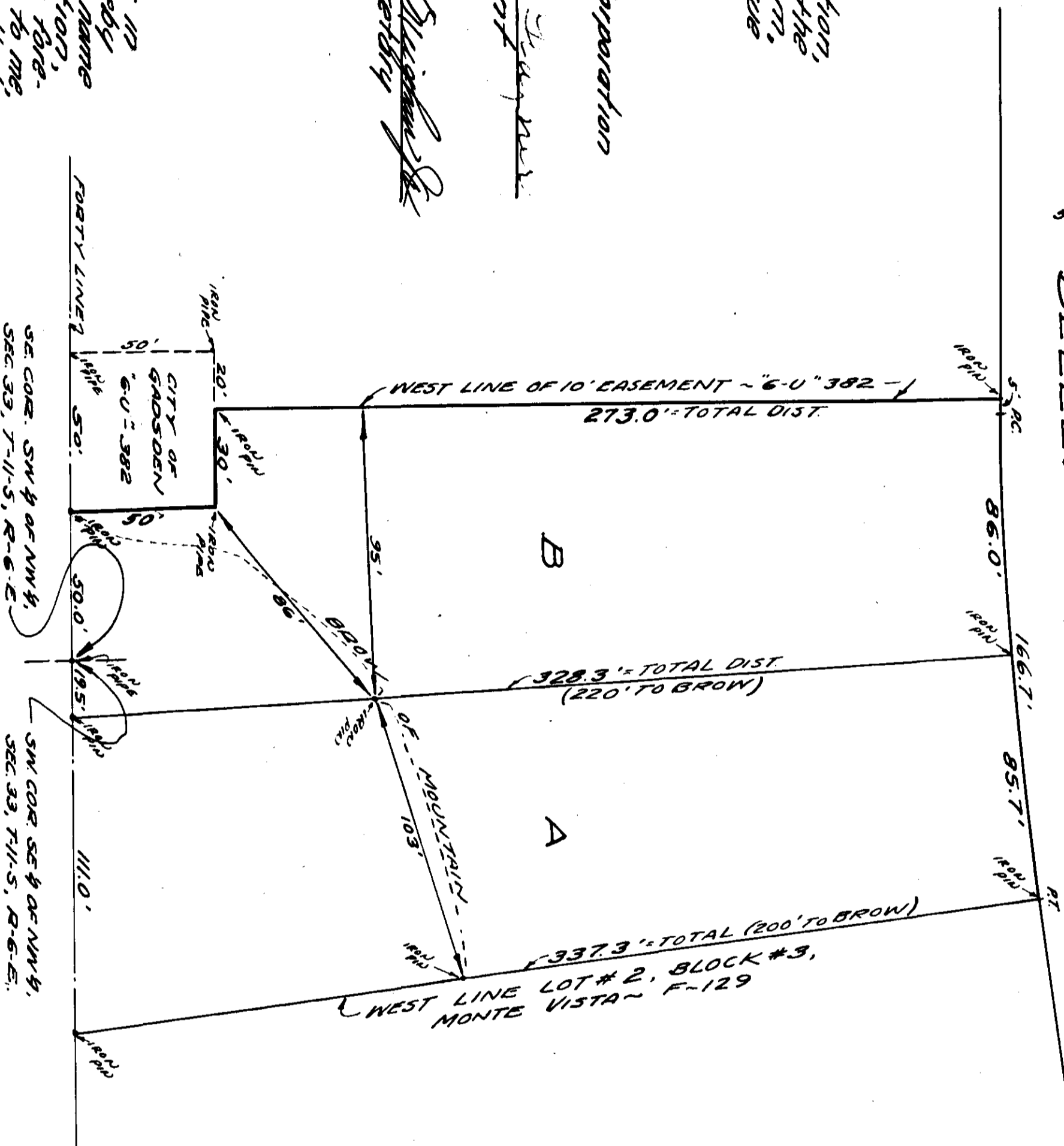


THE GADDSDEN CORPORATION'S
MONTE VISTA
SUPPLEMENTAL ADDITION

F 293

BELLEVUE DRIVE



State of Alabama,
County of Etowah,
The undersigned, The Gadsden Corporation,
as owners of the lands embraced by the
within plat, do hereby certify, confirm,
and adopt the said plat as being true
and correct.
This the 31st day of May, 1935.

The Gadsden Corporation
by President
Attested by Secretary

State of Alabama,
County of Etowah,
I, W. L. Wagner, a Notary Public in
and for said County and State, do hereby
certify that Gladis Garner, whose name
as President of The Gadsden Corporation,
a corporation, owner, is signer to the fore-
going conveyance, and who is known to me,
acknowledged before me on this day, that
being informed of the contents of the con-
veyance, she as such officer, and with
full authority, executed the same instrument
for and as the act of said corporation on the
day the same bears date.
Given under my hand this 1st day of May, 1935

W. L. Wagner
Notary Public

State of Alabama,
County of Etowah,
We, the undersigned, hereby approve
the subdivision represented by the
within plat.

Secretary
Gadsden Planning Board
Date: May 1, 1935

State of Alabama,
County of Etowah,
I, A. L. Wagner, a registered surveyor
of Gadsden, Alabama, hereby certify
that I surveyed the lands embraced
within the foregoing plat, that the
same is true and correct as herein
represented.
This the 28th day of May, 1935

A. L. Wagner
REG. L.S. # 1526

THE FIRST OF MAY, 1935

City	Etowah
County	Etowah
State	Alabama
Map No.	293
Book No.	
Page No.	23
Year	1935

26
27
28