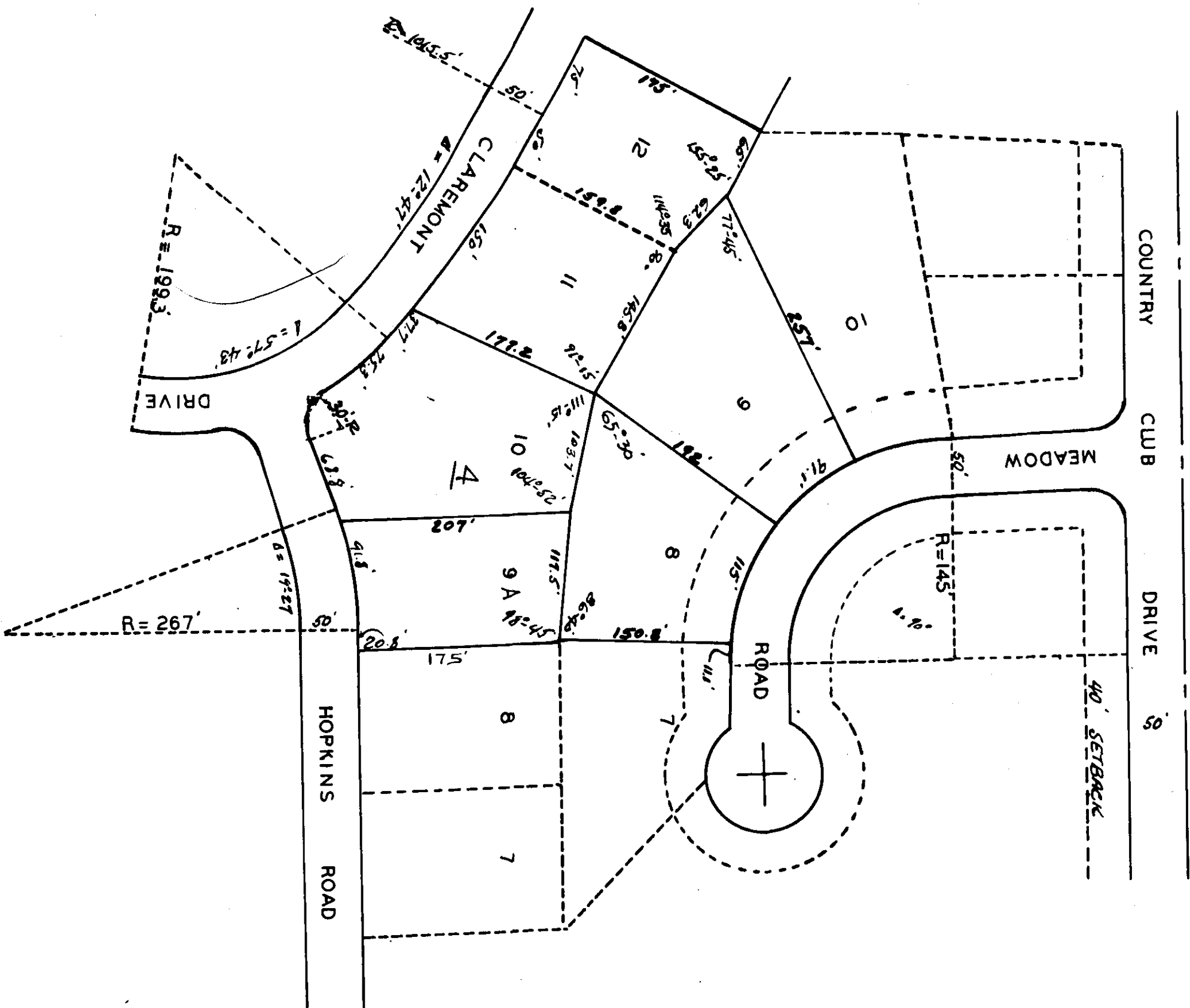


COUNTRY CLUB ESTATES

REARRANGEMENT OF LOTS - 9-10-11-12 IN BLOCK-4
AND LOTS - 8-9 IN THE REARRANGEMENT OF LOT-18



I, Homer H. Turner, a Registered Surveyor and Land Surveyor hereby certify that the above is a true and correct map as per the survey conducted herein, as surveyed by me on this 10th day of March, 1955.

Homer H. Turner Reg.
Homer H. Turner Reg.

We the undersigned City Clerk and James B. Lippincott, as Trustees of Country Club Estates on this day of March, 1955, do hereby certify that the above is a true and correct map as per the survey conducted herein, as surveyed by me on this 10th day of March, 1955.

James B. Lippincott
City Clerk

STATE OF ALABAMA:
COUNTY OF Etowah:
I, the undersigned, a Notary Public in and for said County and State, hereby certify that James B. Lippincott and Homer H. Turner are duly sworn and qualified to perform the duties of their respective offices, and that the above is a true and correct map as per the survey conducted herein, as surveyed by me on this 10th day of March, 1955.

Notary Public
Notary Public

APPROVED BY CITY PLANNING COMMISSION
THIS THE 10 DAY OF MARCH, 1955

City Planning Commission

APPROVED BY THE CITY ENGINEER
THIS THE 10 DAY OF MARCH, 1955

City Engineer

400 PLATT P.
F. 1427
155

25
130
155

THE STATE OF ALABAMA
OFFICE OF PROBATE JUDGE
COUNTY OF Etowah
I hereby certify that the foregoing map was filed in my office on this day of March, 1955, and that the same is a true and correct map as per the survey conducted herein, as surveyed by me on this 10th day of March, 1955.
The following fees have been paid:
Not. Fee _____
Map Fee _____
Doc. Fee _____
Total _____
Judge of Probate Etowah County, Ala.

4-253