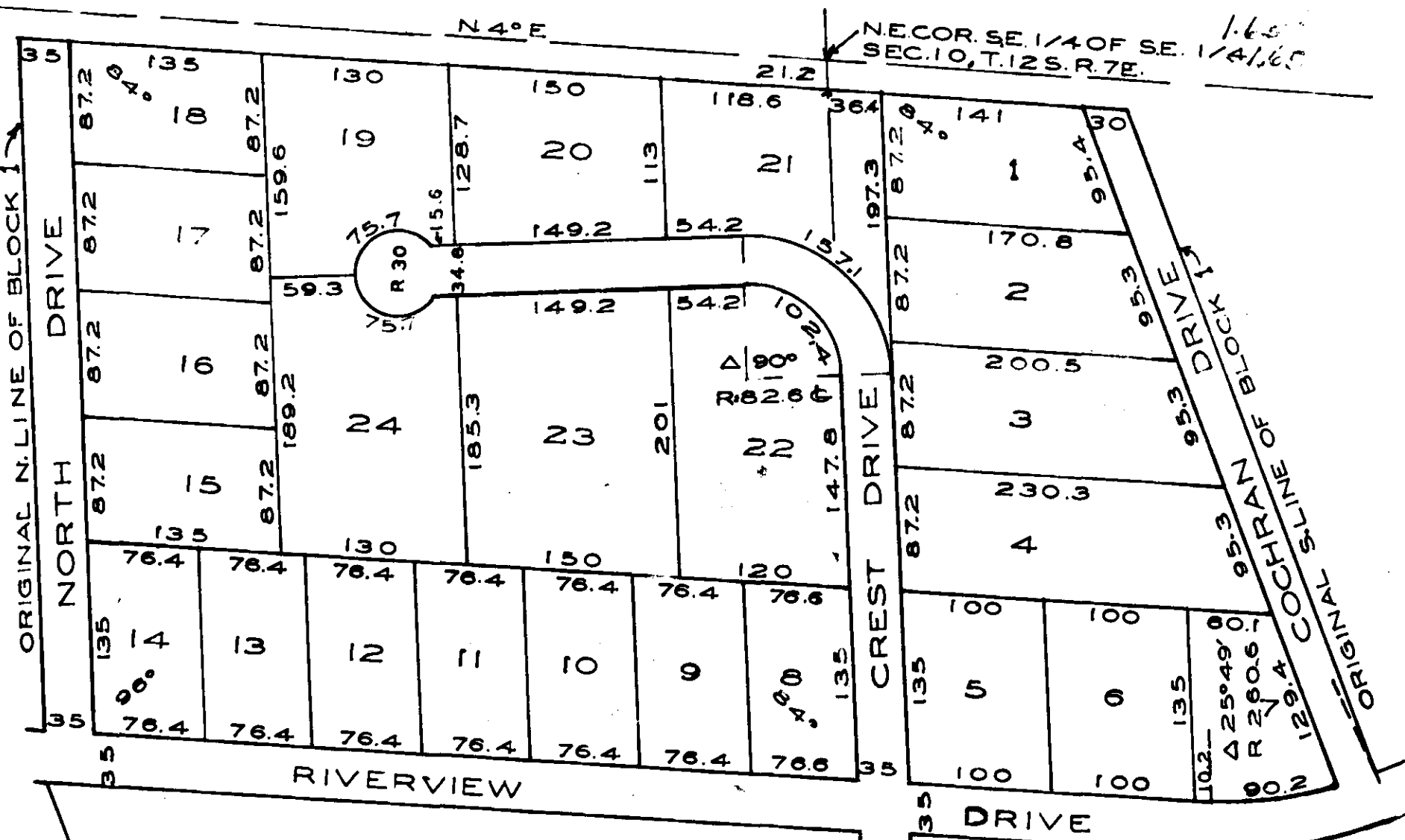


RE-ARRANGEMENT OF BLOCK 1
OF
RIVER VIEW ADDITION NUMBER TWO
TO
HOKES BLUFF, ALABAMA.



I, BRUCE SWAIN, A LICENSED SURVEYOR AND SURVEYOR GENERAL, THIS DAY HAVE A CORRECT MAP OF THE RE-ARRANGEMENT OF BLOCK 1 OF RIVER VIEW ADDITION NUMBER TWO TO HOKES BLUFF, ALABAMA, AS SURVEYED BY ME THIS JANUARY 4 1955.

Bruce Swain
B.R.S. 342 BRUCE SWAIN

I, WHO AM DESIGNATED AS THE OWNER OF ALL THE PROPERTY DESCRIBED IN THE ABOVE MAP OR PLAN HEREBY RATIFY AND ADOPT SAID MAP.
WITNESS MY HAND THIS 14 DAY OF Feb 1955

Ed. C. Cochran
OWNER

SEAL OF ALABAMA
SUCCESSION COURT

I, *Ed. C. Cochran*, A NOTARY PUBLIC IN AND FOR SAID COUNTY AND STATE, HEREBY CERTIFY THAT THE S. COCHRAN WHOSE NAME IS SIGNED TO THE FOREGOING ADOPTION OF PLAT AND WHO ARE ASSUMED TO BE ACKNOWLEDGED BEFORE ME ON THIS DAY HAVE BEEN INFORMED OF THE CONTENTS OF SAID INSTRUMENT AND EXECUTED THE SAME VOLUNTARILY ON THE DAY THIS SIGNED BEHIND ME.

GIVEN UNDER MY HAND AND SEAL THIS 14 DAY OF Feb 1955
Ed. C. Cochran
NOTARY PUBLIC

ANNEXATION-MISC. 126 PAGE 569

THE STATE OF ALABAMA
ETOWAH COUNTY
OFFICE OF PROBATE JUDGE
I, *W. H. ...*, Probate Judge in and for Etowah County, Alabama, do hereby certify that the foregoing is a true and correct copy of the original as filed in my office on this 16 day of Feb 1955 at 12:30 P.M.
W. H. ...
Probate Judge
Etowah County, Ala.

Ed. C. Cochran
1955

F-243