

SW 86 NS 44 21-12-6

F-231

RESUBDIVISION OF CLUBVIEW CIRCLE

STATE OF ALABAMA
COUNTY OF ETOWAH

I, HOMER H. TURNER, A REGISTERED ENGINEER AND LAND SURVEYOR OF GADSDEN, ALA., HEREBY CERTIFY THAT THE FOREGOING IS A TRUE AND CORRECT MAP OF THE PLAT OF THE PROPERTY CONTAINED HEREIN AS SURVEYED AND PLATTED BY ME ON THIS THE 24TH DAY OF AUGUST, 1954.

Homer H. Turner Registered No. 879
TURNER ENGINEERING COMPANY
GADSDEN, ALA.

THE UNDERSIGNED OWNERS OF THE LAND HEREIN DESCRIBED HEREBY RATIFY AND ADOPT THIS MAP OR PLAT AS BEING TRUE AND CORRECT ON THIS THE 24TH DAY OF AUGUST, 1954.

Walter T. Roberts
E. L. Roberts
Betty B. Roberts
Lula Mae Roberts

STATE OF ALABAMA
COUNTY OF ETOWAH

I, Roy Pearson, A NOTARY PUBLIC IN AND FOR SAID COUNTY AND STATE, HEREBY CERTIFY THAT FRANK N. ROBERTS AND WIFE, VIOLA T. ROBERTS, J. L. ROBERTS AND WIFE, LULA MAE ROBERTS, E. L. ROBERTS AND WIFE, BETTIE B. ROBERTS, WHOSE NAMES ARE SIGNED TO THE FOREGOING CONVEYANCE, AND WHO ARE KNOWN TO ME, ACKNOWLEDGED BEFORE ME ON THIS DAY THAT BEING INFORMED OF THE CONTENTS OF THIS CONVEYANCE, THEY EXECUTED THE SAME VOLUNTARILY, ON THIS THE DAY THE SAME BEARS DATE.

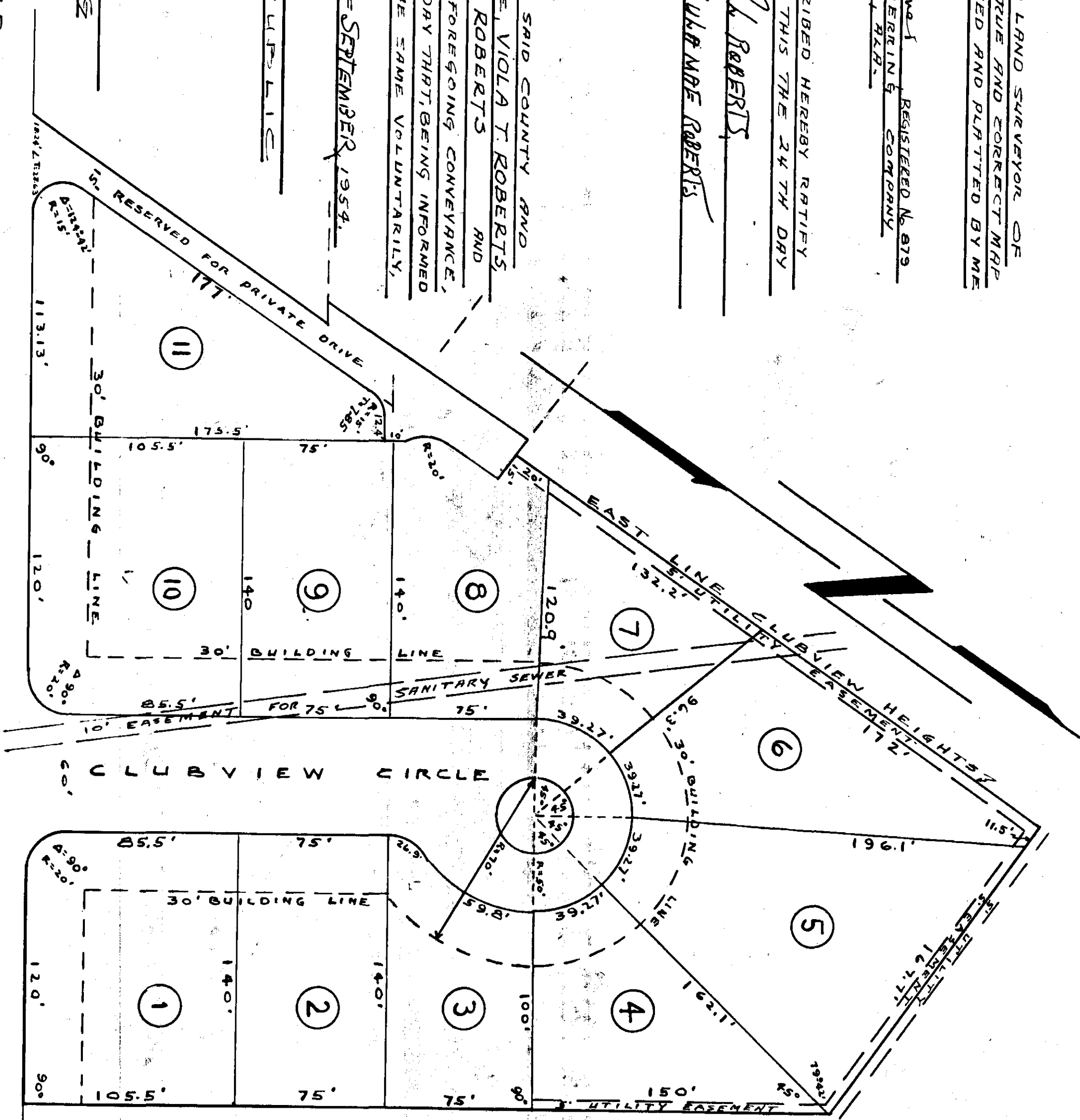
Roy Pearson
NOTARY PUBLIC

APPROVED FOR THE CITY OF GADSDEN
THIS THE 24TH DAY OF OCTOBER, 1954.

City Engineer

APPROVED FOR THE CITY PLANNING BOARD
THIS THE 24TH DAY OF OCTOBER, 1954.

City Planning Board



R A I N B O W

D R I V E

THE STATE OF ALABAMA
ETOWAH COUNTY
OFFICE OF PROBATE JUDGE
Judge of Probate
E. W. ...
1954