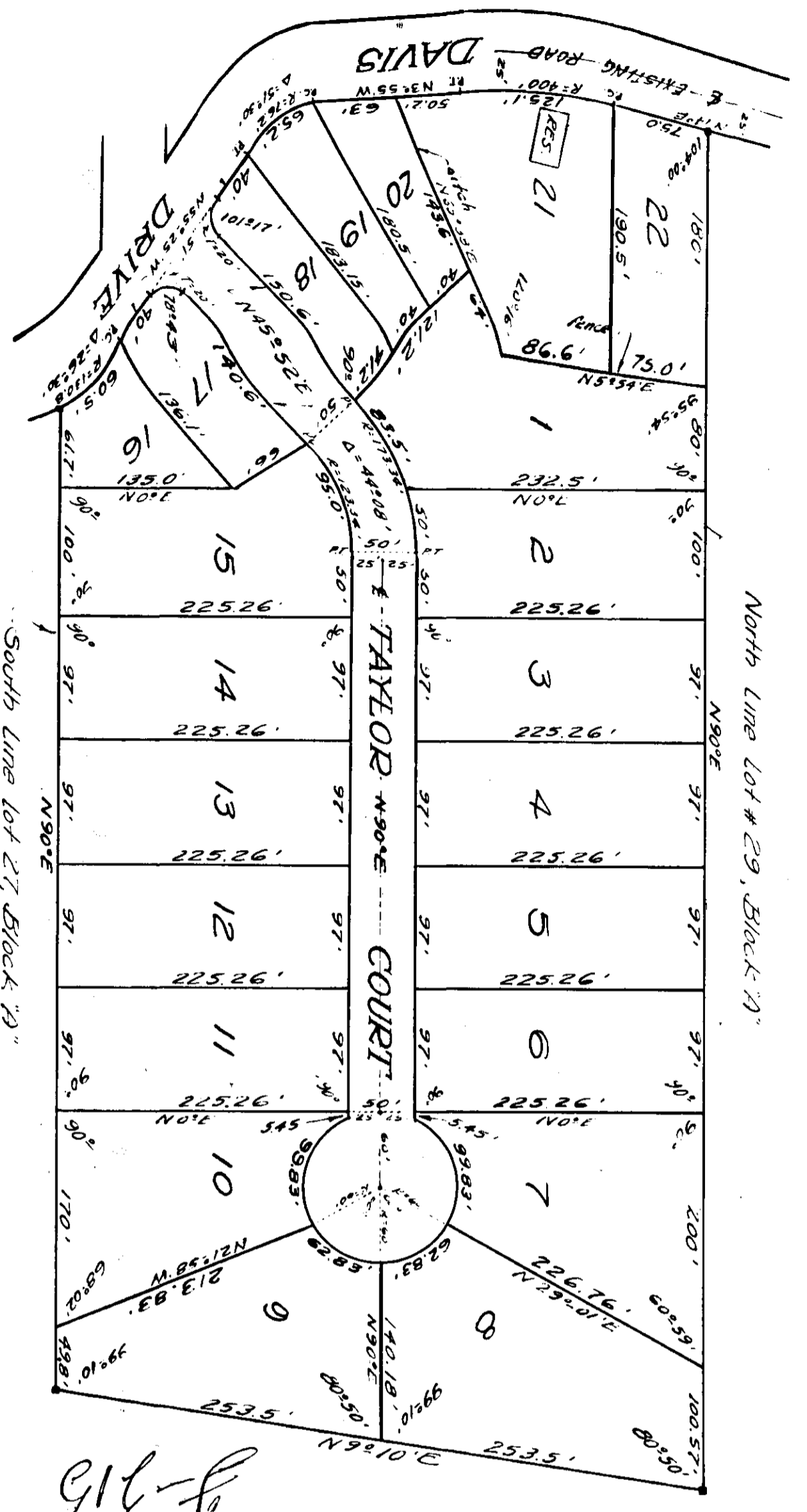


215

TAYLOR COURT
 GADSDEN, ALABAMA
 SCALE ~ 1"=100'
 A SUB-DIVISION OF LOTS 27, 28 & 29,
 IN BLOCK 'A' OF THE GADSDEN REALTY
 COMPANY SUBDIVISION ~ 'C-171'



State of Alabama,
 County of Etowah,
 We the undersigned hereby approve the
 Subdivision and Plat herein shown.

A. L. Wagner
 Gadsden City Engineer
 Date Aug. 13 - 54
Paul W. Halliburton
 Gadsden Planning Board
 Date Aug. 13, 1954

State of Alabama,
 County of Etowah,
 We the undersigned, Frank Roberts and wife,
 Viola T. Roberts, as owners of the lands
 embraced within the foregoing plat, do hereby
 verify, confirm and adopt the same as being
 true and correct.
 This the 15 day of August, 1954.

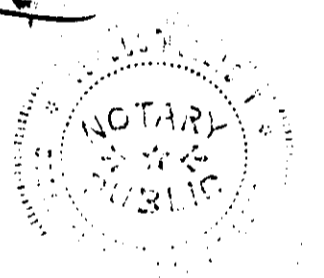
Viola T. Roberts LS
Frank Roberts LS

State of Alabama,
 County of Etowah,
 I, Viola T. Roberts, a Notary Public in and for
 said County and State, hereby certify that
 Frank Roberts, and wife, Viola T. Roberts,
 owners, whose names are signed to the fore-
 going conveyance, and who are known to me,
 acknowledged before me on this day that
 being informed of the contents of the convey-
 ance, they executed the same voluntarily,
 on the day the same bears date.

Viola T. Roberts
 Notary Public
 Witness my hand this 15 day of August, 1954.

State of Alabama,
 County of Etowah,
 I, A. L. Wagner, a registered surveyor of
 Gadsden, Alabama, hereby certify that I
 made a survey of the land embraced
 within the foregoing plat that the same
 is true and correct as represented herein.
 This the 13th day of August, 1954.

A. L. Wagner
 Reg. LS # 16226



THE STATE OF ALABAMA OFFICE OF PROBATE JUDGE
 ETOWAH COUNTY
 I, W. L. ..., Judge of Probate, Etowah County, Ala.
 do hereby certify that the foregoing was the instrument
 filed for record on this 15 day of August, 1954.
 The following fees have been paid:
 Not. Fee 45
 Seal Tax 25
 Rec. Fee 10
 Total 80