

THE J. R. STRAWN ADDITION

to
MCCLAIN HEIGHTS

SCALE - 1" = 100'

State of Alabama,
County of Etowah,

We the undersigned, J. R. Strawn and wife, Elsie L. Strawn, as owners of the lands embraced by the within plot do hereby ratify, confirm, and adopt the same as being true and correct.

This the 12th day of July, 1954

J. R. Strawn, J.S.
Elsie L. Strawn-J.S.

State of Alabama,
County of Etowah,

I, James Sibbey, a Notary Public in and for said County and State, hereby certify that J. R. Strawn, and wife, Elsie L. Strawn, owners, whose names are signed to the foregoing conveyance, and who are known to me, acknowledge before me on this day, that being intimated of the contents of the conveyance, they executed the same voluntarily on the day the same bears date.

Witness my hand this 12th day of July, 1954

James Sibbey
Notary Public

State of Alabama,
County of Etowah,

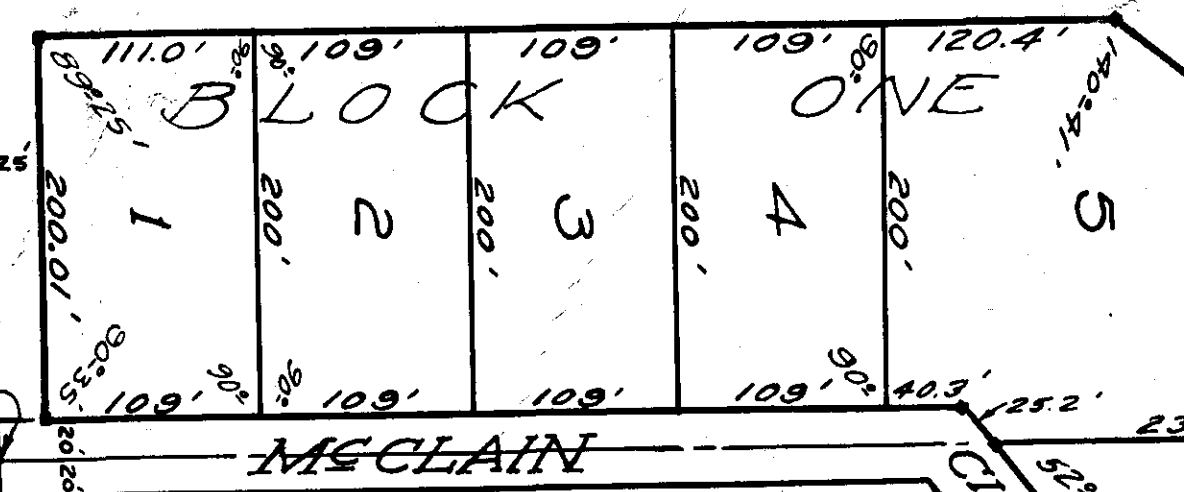
I, Al Wagon, a registered Land Surveyor, hereby certify that I made a survey of the lands embraced by the within plot, that the same is true and correct as represented herein.

This the 14th day of July, 1954.

Al Wagon
S.A. #1626

State of Alabama,
County of Etowah,
City of Gadsden,
We the undersigned, hereby approve the Subdivision and plat as herein shown.

W. R. Linn
Gadsden City Engineer
Date July 9 - 1954
T. M. Felt
Gadsden Planning Board
Date July 16, 1954



Street as platted by "McClain Heights" as recorded in plat book "C", page 393, Probate Office, Etowah County, Alabama.

Gadsden Fraternal Order
of Police Building Corporation,
Inc.
deed book 404, p. 183

J. R. Strawn & Elsie L. Strawn
deed book 569, p. 8

3.00 P.
25
1.95

STATE OF ALABAMA
ETOWAH COUNTY
OFFICE OF PROBATE JUDGE
The following fees have been paid:
Deed Fee \$1.95
Mortgage Fee \$2.50
Total \$4.45
Judge of Probate Etowah County, Ala.