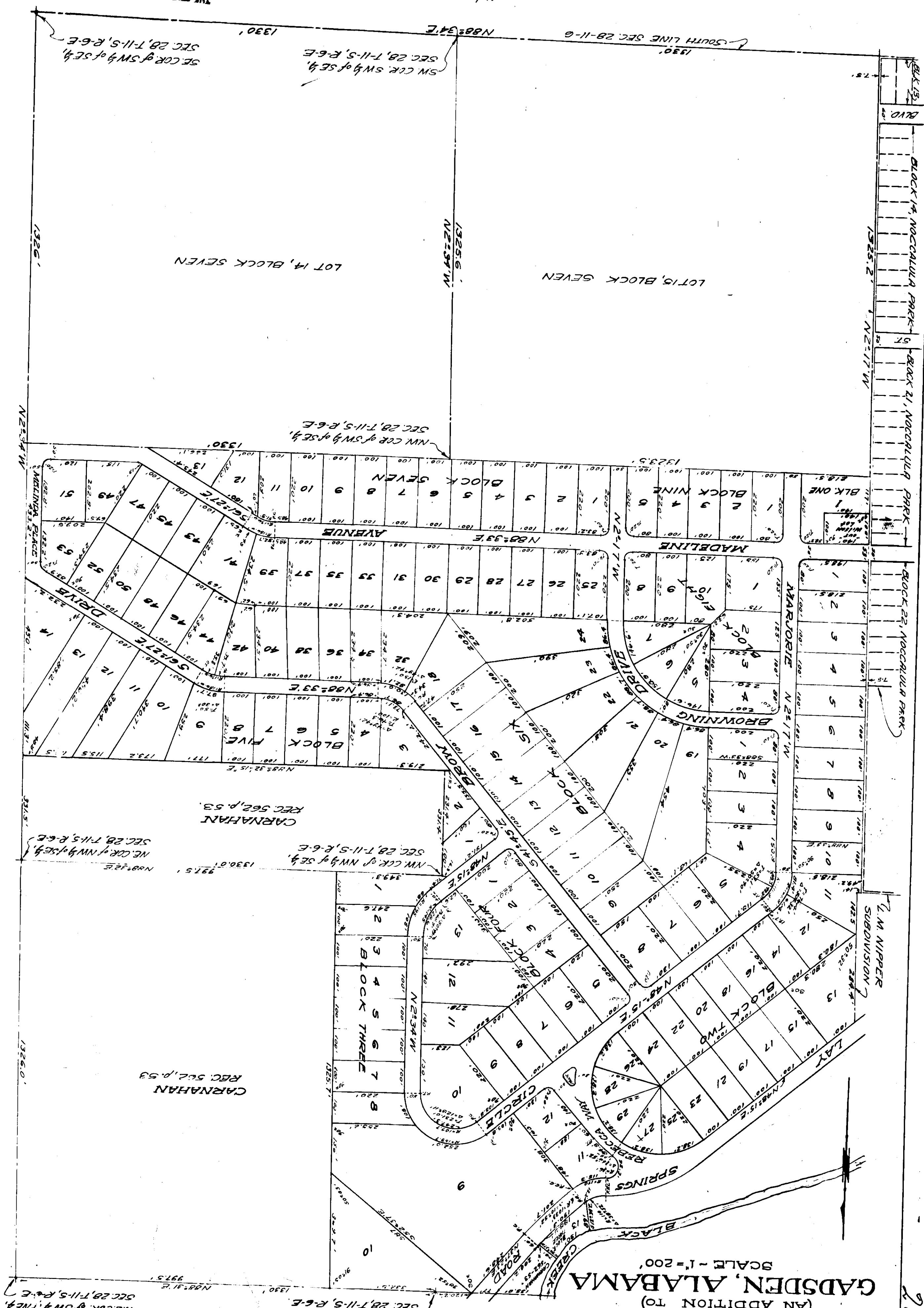


MOUNTAIN-TOP ESTATES
 (AN ADDITION TO)
GADSDEN, ALABAMA
 SCALE - 1"=200'



We, the undersigned, hereby approve the subdivision and plat as herein shown.
 State of Alabama,
 County of Etowah,
 City of Gadsden,
 J. M. F. [Signature]
 Gadsden City Engineer
 Date May 31, 1954

I, J. L. Wagoner, a registered land surveyor of Gadsden, Alabama, hereby certify that I made a survey of the lands embraced within the plat, that the same is the correct as herein represented.
 This the 27th day of May, 1954.
 J. L. Wagoner [Signature]
 May 27, 1954

I, a Notary Public for said County and State, hereby certify that Gladys Glazner, whose name is being acknowledged before me on that being informed of the contents of the foregoing conveyance, and with full authority, and as the act of the Corporation, and with full authority, and as the act of the Corporation.
 Given under my hand this 4th day of May, 1954.
 State of Alabama,
 County of Etowah,
 J. M. F. [Signature]
 Notary Public

The undersigned, The Gadsden Corporation, as owners of the lands embraced in the within plat, acting by and through its president, Gladys Glazner, does hereby ratify, adopt and confirm the said plat as being true and correct.
 This the 4th day of May, 1954.
 The Gadsden Corporation
 by J. M. F. [Signature] President
 Attested by J. M. F. [Signature] Secretary

THE STATE OF ALABAMA
 ETOWAH COUNTY
 Office of Probate Judge
 I hereby certify that the foregoing plat was duly recorded on the day of May 1954.
 The following fees have been paid:
 Civil Fee
 Map Fee
 Land Tax
 Rec. Fee
 Judge of Probate
 J. M. F. [Signature]
 1954

BLK 13
 BLVD
 BLOCK 14, NOCCALIQUA PARK
 ST
 BLOCK 21, NOCCALIQUA PARK
 BLOCK 22, NOCCALIQUA PARK
 2.14 ACRE SUBDIVISION

203