

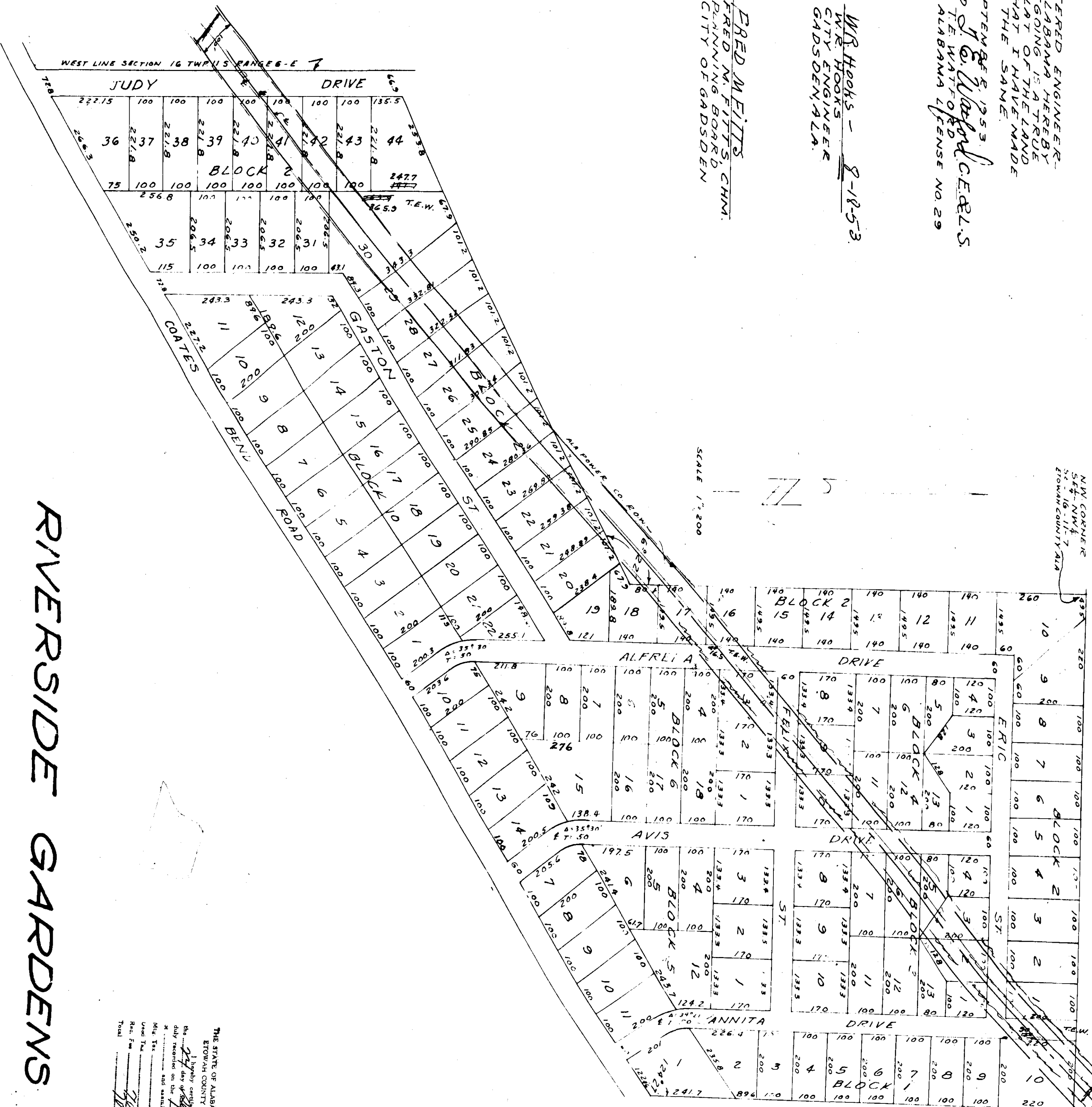
STATE OF ALABAMA
COUNTY OF ETOWAH

I, T. WATFORD, A REGISTERED ENGINEER-SURVEYOR OF GADSDEN ALABAMA HEREBY CERTIFY THAT THE FOREGOING IS A TRUE AND CORRECT MAP OR PLAN OF THE LAND SHOWN HEREIN AND THAT I HAVE MADE AN ACTUAL SURVEY OF THE SAME.

THIS THE 21ST DAY OF SEPTEMBER, 1953.
SIGNED T. Watford
T. WATFORD
ALABAMA LICENSE NO. 29

APPROVED: W. R. Hooks - 8-18-53
W. R. HOOKS
CITY ENGINEER
GADSDEN, ALA.

APPROVED: Fred M. Pitts
FRED M. PITTS, CHM.
PLANNING BOARD
CITY OF GADSDEN



RIVERSIDE GARDENS

STATE OF ALABAMA
COUNTY OF ETOWAH
I, LYNN SECRETARY OF THE GRANT PRESIDENT DEVELOPMENT CO. AS OWNER, HEREBY RATIFY AND ADOPT THIS PLAN AS BEING TRUE AND CORRECT.
THIS THE 21ST DAY OF SEPTEMBER, 1953.

BY ESGARANT PRESIDENT
BY J. LYNN SECRETARY

STATE OF GEORGIA
COUNTY OF FULTON
I, THOMAS J. LEDELL, A NOTARY PUBLIC, SITE OF GEORGIA AT INGLETON, CERTIFY THAT S. GRANT, PRESIDENT, WHOSE NAMES AS GRANT PRESIDENT DEVELOPMENT CO. ARE SIGNED TO ME IN KNOWING MAP AND WHO ARE KNOWN TO ME AS HAVING BEEN BEFORE ME ON THIS DAY THAT SUCH OFFICERS OF THE COMPANY AUTHORITY EXECUTED SAID MAP AND WITH FULL VOLUNTARILY FOR AND AS AN ACT OF SAID COMPANY.
WITNESS MY HAND AND SEAL THIS THE 21ST DAY OF SEPTEMBER, 1953

THOMAS J. LEDELL
NOTARY PUBLIC
STATE OF GEORGIA
My Comm. Expires 06-15-1958

NOTE: IRON PINS PUT IN AT ALL LOT CORNERS

NOTE: ALL CURVE DATA SHOWN IS TO CENTER LINE OF STREET

THE STATE OF ALABAMA
ETOWAH COUNTY
I, W. R. Hooks, Clerk of Probate, do hereby certify that the foregoing is a true and correct copy of the original as filed in my office for record on the 11th day of September, 1953.
W. R. HOOKS
Clerk of Probate
GadSDen, ALA.