

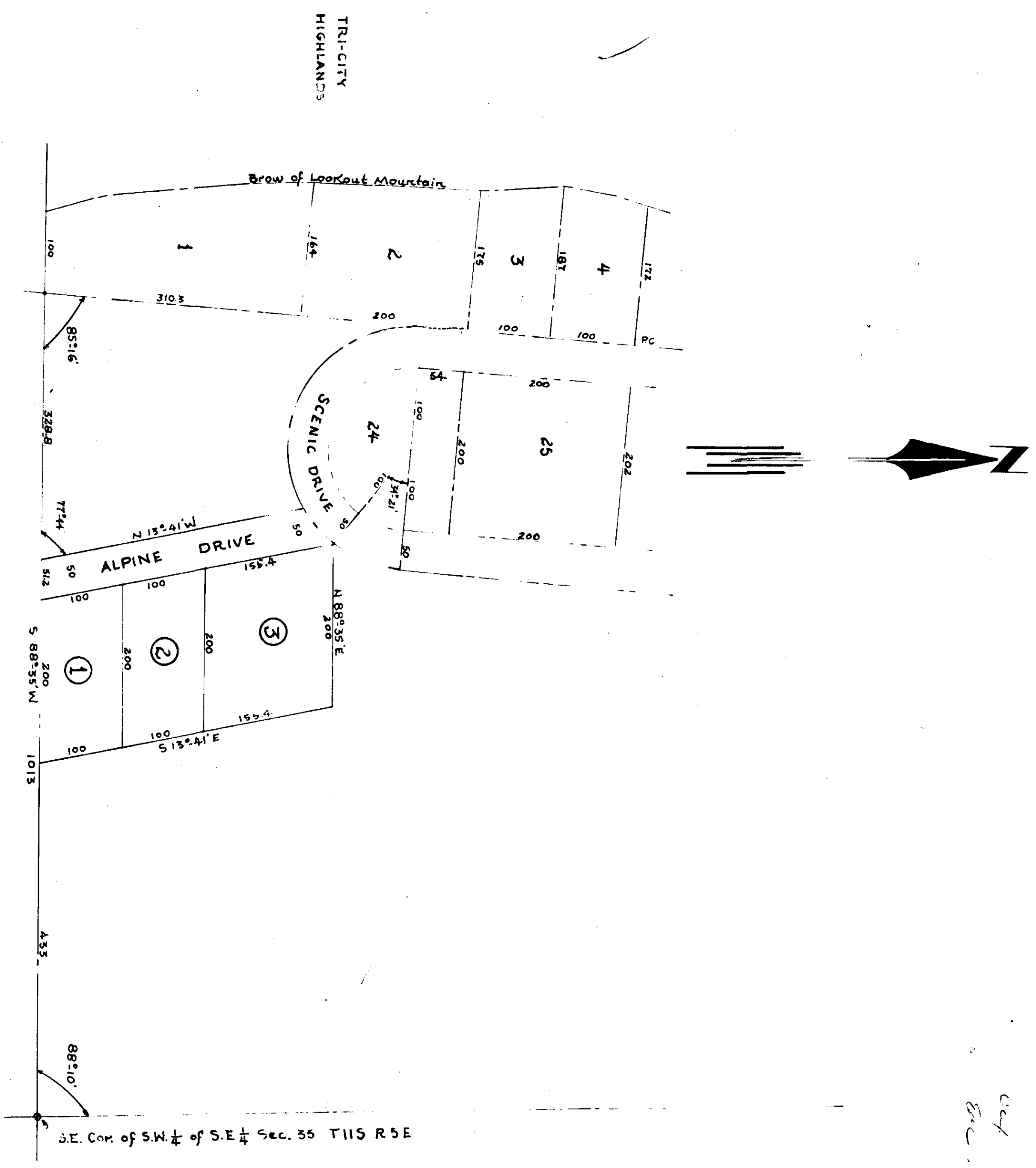
THIS IS TO CERTIFY THAT THE ABOVE DESCRIBED TRACTS ARE THE SAME AS SHOWN ON THE MAP OF THE TRI-CITY HIGHLANDS SUBDIVISION, AS FILED IN THE OFFICE OF THE JUDGE OF PROBATE FOR ETOWAH COUNTY, ALABAMA, ON THE 17th DAY OF JULY, 1953.

W. S. Simmons
 W. S. SIMMONS
 440

W. S. Simmons
 W. S. SIMMONS

17 July 1953
 H. R. CASPER

Approved for the State of Alabama:
 W. R. Hooks
 7-22-53
 F. M. FITTS



cut
 Enc.
 F-169

ALPINE SUBDIVISION

THE STATE OF ALABAMA
 ETOWAH COUNTY
 OFFICE OF PROBATE JUDGE
 I hereby certify that this instrument was filed in office by me and was duly recorded on the 17th day of July, 1953, in Book 1157, Page 102, of the Public Records of Etowah County, Alabama.

W. S. Simmons
 Judge of Probate Etowah County, Ala.