

1. In the original plat of the same land, Surveyor, George Corlitz, had filed a true and correct and of title of the lands shown in the survey and filed in his name.

2. The same land was not in compliance for payment.

3. The same land was not in compliance for payment.

L. L. SIMONS
Registered Rec. Exp.

The contents of the property described, being fully and accurately and of title as shown and correct.

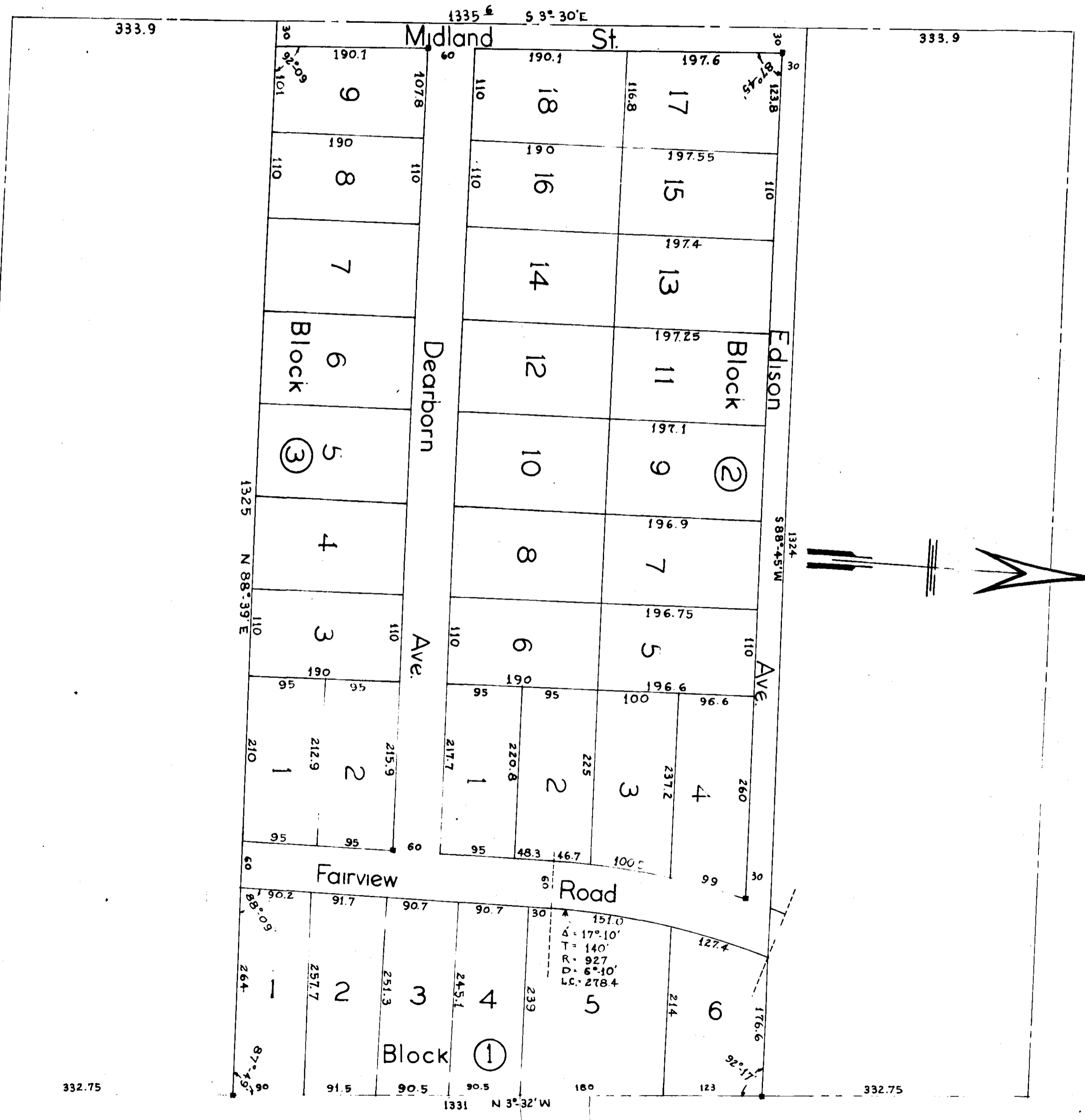
This the 27th day of May, 1922.

James J. Cooper
Anna M. Rankin

Notary Public
State of Alabama
My commission expires the 31st day of May, 1922.

OTAR
Notary Public
State of Alabama
My commission expires the 31st day of May, 1922.

W. B. Jackson
9-2-20



FAIRVIEW SUBDIVISION
being a portion of the S.E. 1/4 of the S.E. 1/4 of
Sec. 20 T.15 R.6E
Etowah County, Alabama
scale=1"=100'