

STATE OF ALABAMA  
COUNTY OF STONE

I, L. L. SIMONS, a registered land surveyor, hereby certify that this is a true and correct map of a lot of the lands contained herein as surveyed and plotted here.

Corners that are marked are put in concrete for permanent marker  
This is the 19th day of September, 1952.

L. L. SIMONS  
Registered No. 111

As the owners of the property described, hereby certify and adopt this map or plat as being true and correct.  
This the 25 day of SEPT., 1952.

William Hilkey

STATE OF ALABAMA  
COUNTY OF STONE

I, R. C. Willis, a Notary Public in and for said County and State, do hereby certify that the persons whose names are signed to the foregoing map or plat and who are known to me, acknowledged before me and as of that date informed of the contents of said map or plat they executed the same voluntarily.

Given under my hand and seal this the 25 day of SEPT., 1952.

R. C. Willis  
Notary Public

Approved for the City of Gadsden.

W. H. ... Sept 19 - 52  
APPROVED FOR THE CITY PLANNING COMMISSION.

...  
PRESIDENT

THE STATE OF ALABAMA  
COUNTY OF STONE  
I hereby certify that this instrument was filed in office for record on the 25 day of SEPT. 1952 at 11:55 AM in the office of the County Clerk of Stone County, Ala. and was duly recorded on the 26 day of SEPT. 1952 at 11:10 AM in the office of the County Clerk of Stone County, Ala. in the presence of the following witnesses whose names are:

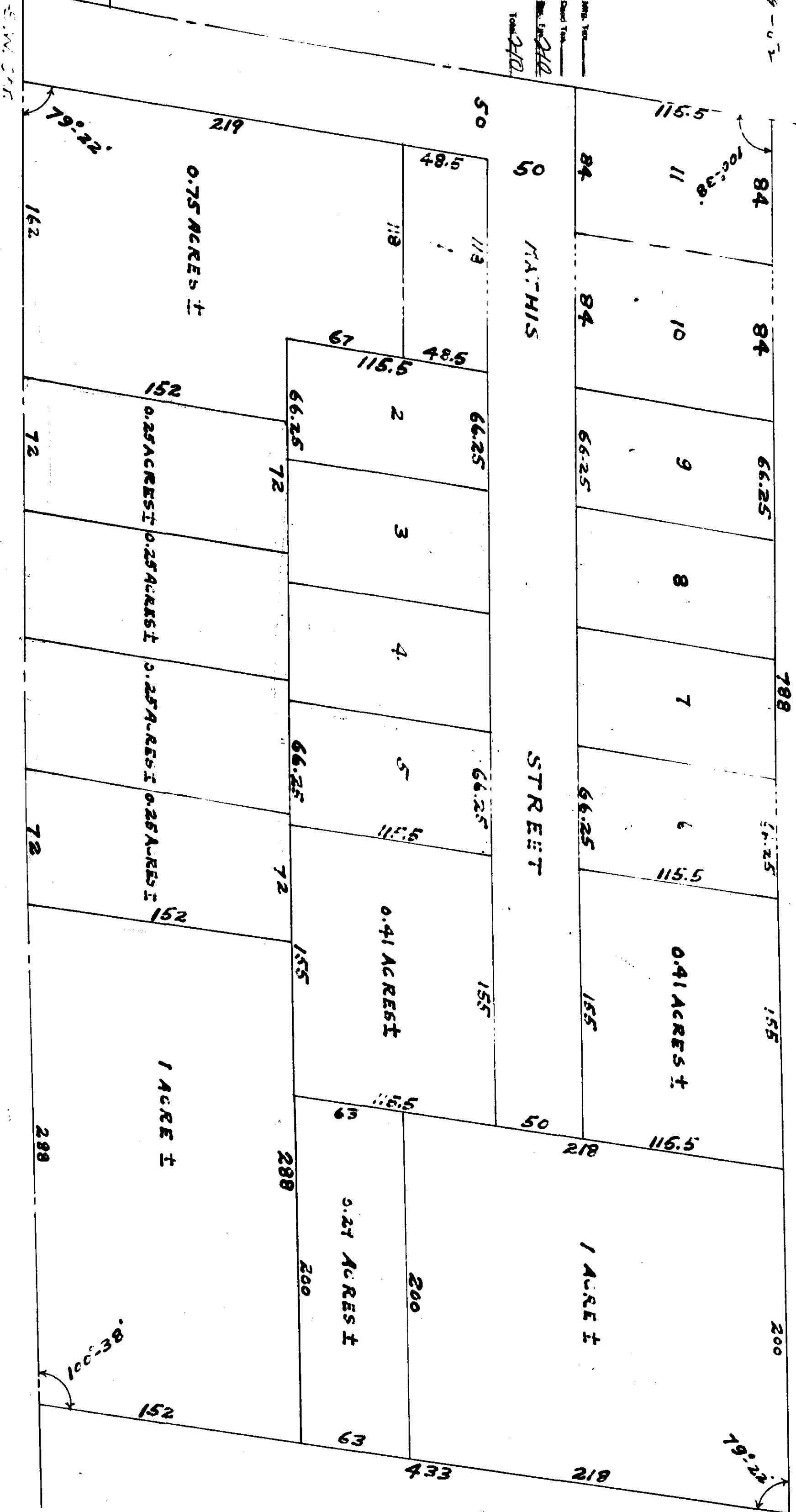
...  
Notary Public

11:55 A

Sept 25 1952

2 10

SHELL ROAD



**443 MATHIS ADDITION 443**  
Being a PORTION OF THE NW 1/4  
OF THE NW 1/4 OF SEC. 13, T12S-R6E  
ELSWORTH COUNTY, ALA.  
September 18, 1952 - Scale 1"=50'

F-133