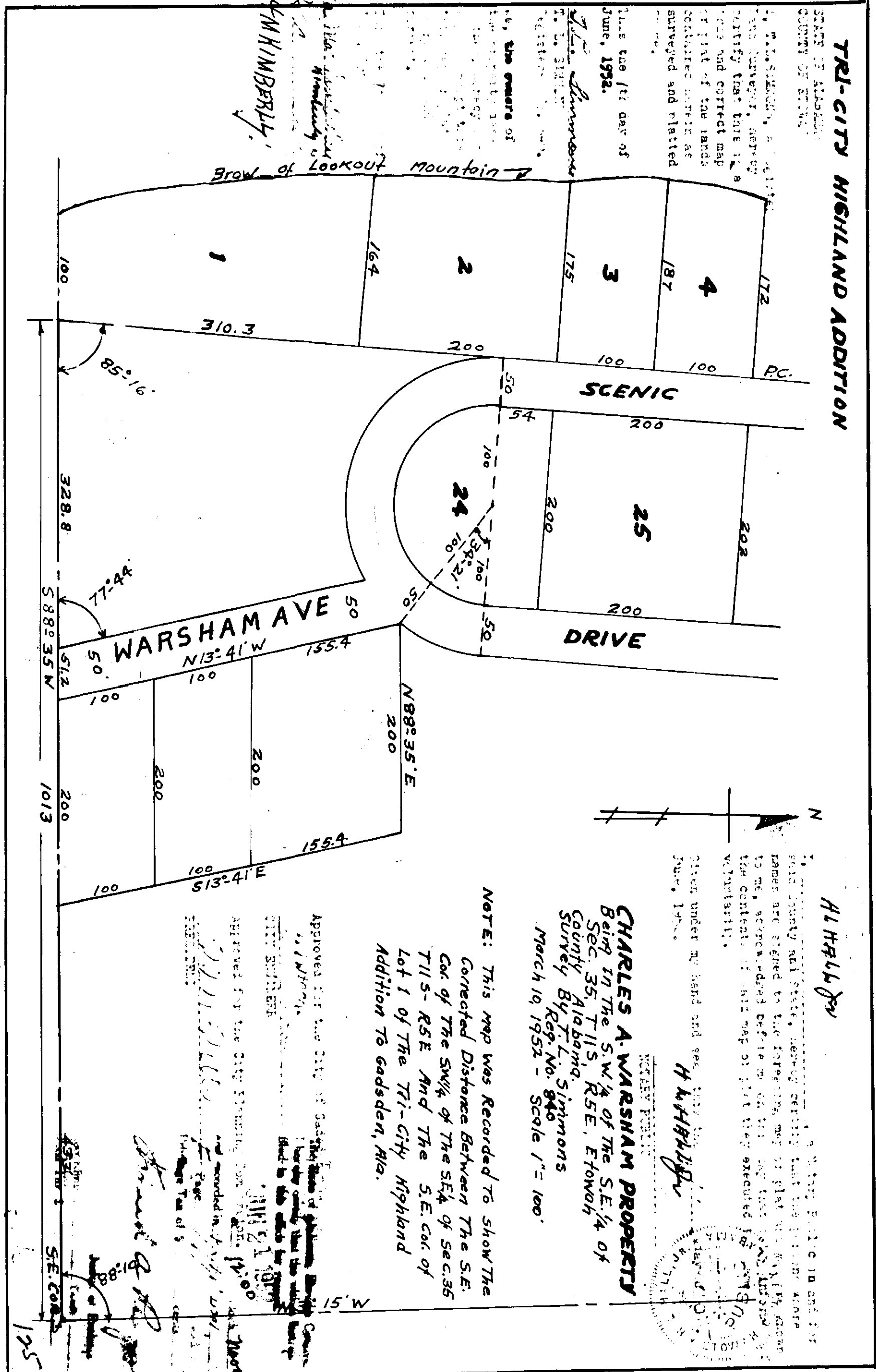


TRI-CITY HIGHLAND ADDITION

STATE OF ALABAMA
COUNTY OF BLOUNTS

This map (1/2 acre of
June, 1992.
The Simmons
the owners of

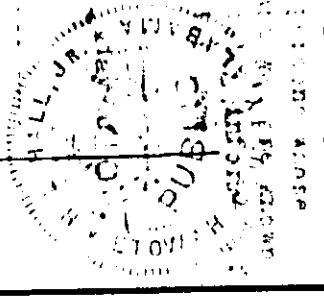


H. W. Hill

CHARLES A. WARSHAM PROPERTY
Being in the S.W. 1/4 of the S.E. 1/4 of
Sec. 35, T.11 S. R.5 E. E.10 W. of
County Alabama
Survey by F. L. Simmons
Map No. 840
March 19, 1992. Scale 1" = 100'

NOTE: This map was recorded to show the
Corrected Distance Between The S.E.
Corners of the SW 1/4 of the S.E. 1/4 of
Lot 1 of The Tri-City Highland
Addition to the S.E. Corner of

Approved for the City of Blount County
by the Mayor and City Council
this 21st day of June, 1992.



1992

F-111
C-1
100

Charles A. Warsham
Surveyor
1992

Blount County, Alabama
City of Blount County