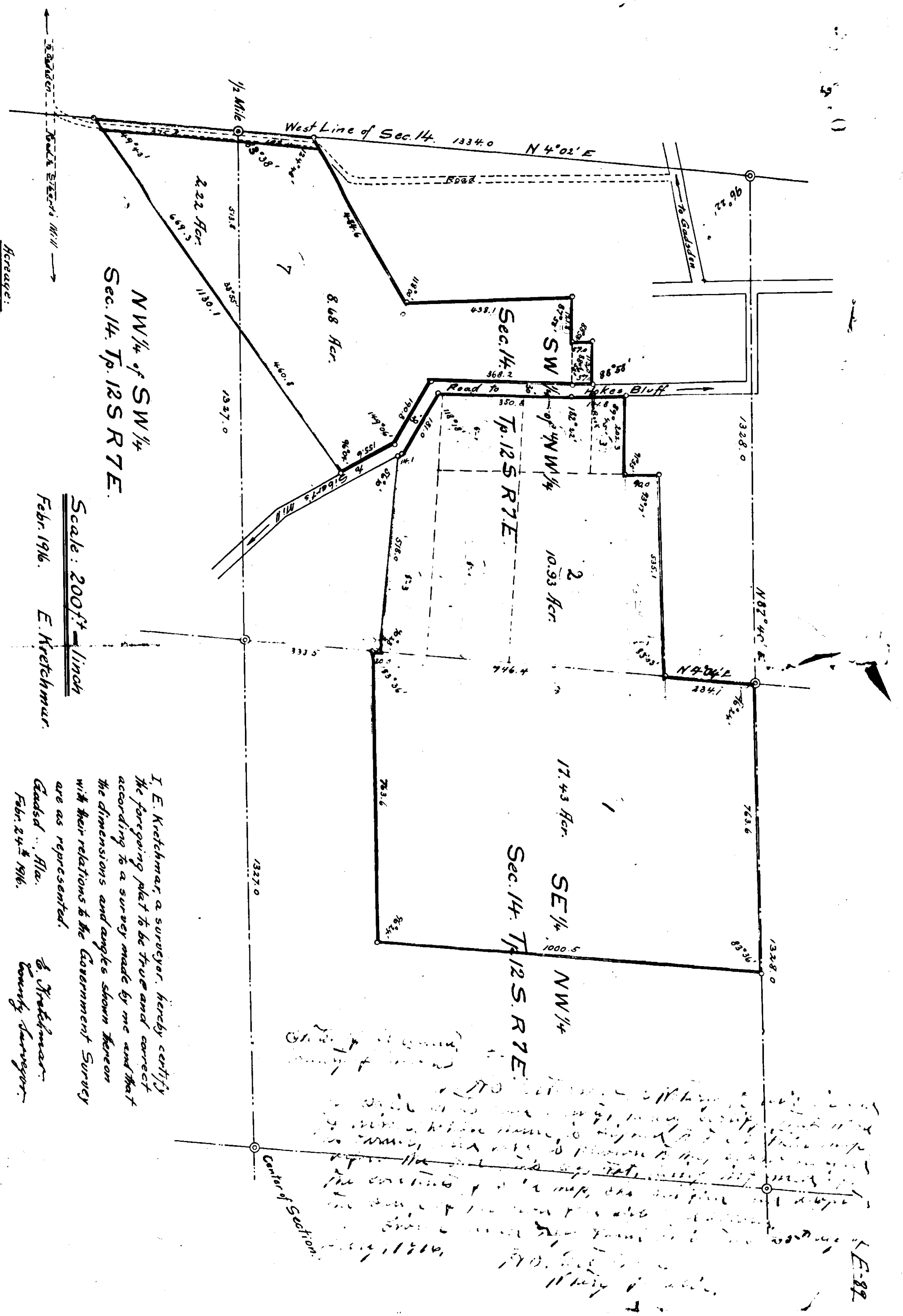


Rosa Maria Lopez

F-82A
cut Sec



in SW 1/4 of NW 1/4 of Road = 8.68 Acs
 in SW 1/4 of NW 1/4 of Road = 10.93
 SE 1/4 of NW 1/4 = 17.43
 NW 1/4 of SW 1/4 = 2.22
 Road = 0.50
 Total: 39.76 Acres.

Scale: 200' = 1" line
 Febr. 1916. E. Ketchum
 & Ketchum
 County Surveyors

I, E. Ketchum, a surveyor, hereby certify
 the foregoing plat to be true and correct
 according to a survey made by me and that
 the dimensions and angles shown thereon
 with their relations to the Government Survey
 are as represented.
 E. Ketchum
 Febr. 24th 1916.

This plat was prepared by E. Ketchum & Ketchum
 County Surveyors, and is a true and correct
 copy of the original survey made by me on
 the 14th day of February, 1916.

E-82