

STATE OF ALABAMA:  
COUNTY OF ETOWAH:

I, T. E. WATFORD, A REGISTERED ENGINEER - SURVEYOR OF ETOWAH COUNTY, ALABAMA, HEREBY CERTIFY THAT THE FOREGOING OR PLAT OF THE LANDS SHOWN HEREIN AND THAT I HAVE MADE AN ACTUAL SURVEY OF THE SAME.

THIS THE 14<sup>TH</sup> DAY OF DECEMBER 1951,  
SIGNED: *T. E. Watford*  
T. E. WATFORD  
112 WATFORD  
112 WATFORD ST  
MONTICELLO, ALA.

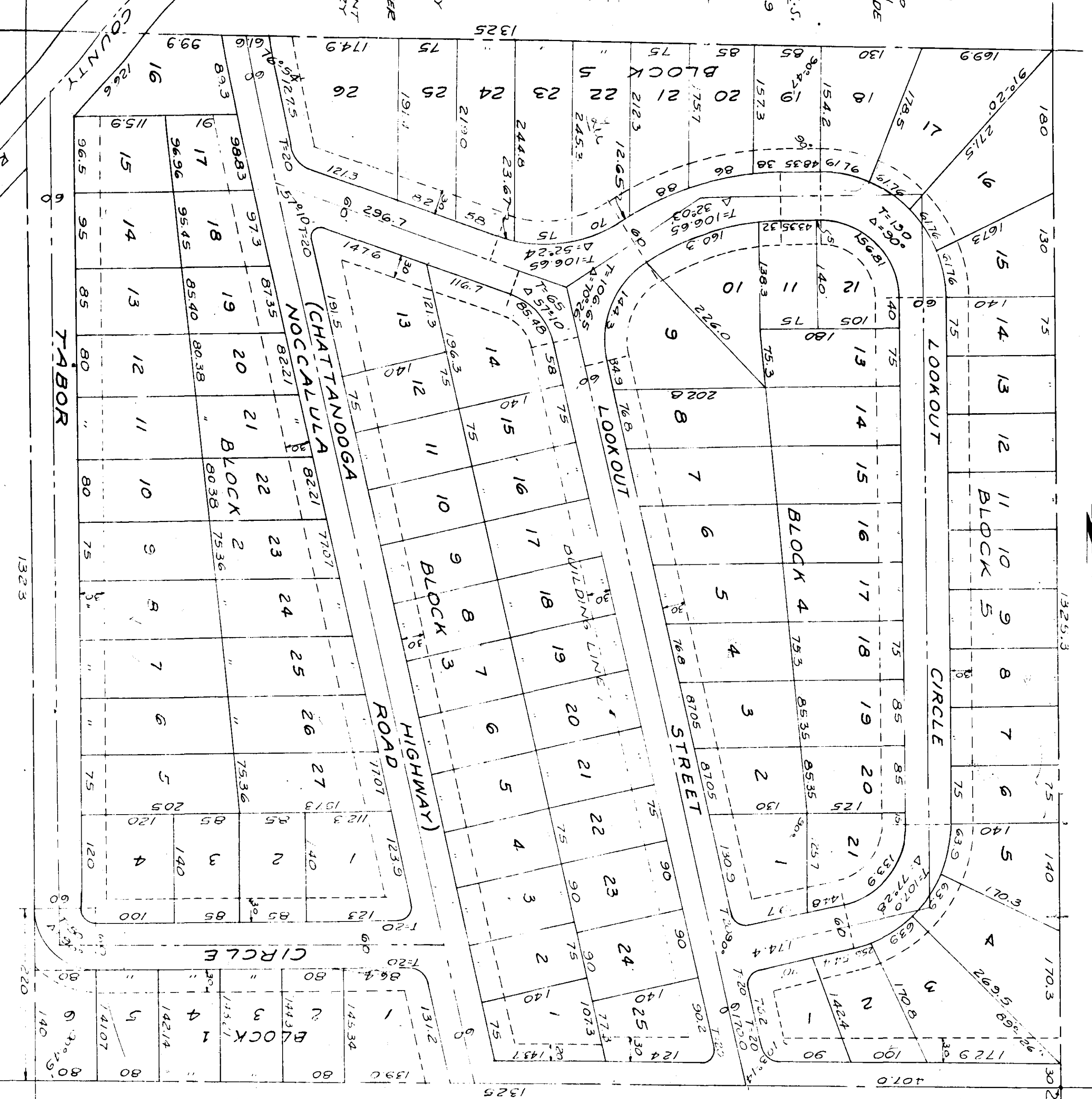
APPROVED:  
*Mr. H. G. Gadsden*  
MR. HOOKS, ENGINEER  
GADSDEN, ALA.  
11/14/51

APPROVED:  
FRANK FITTS, CHM.  
PLANNING BOARD  
CITY OF GADSDEN

STATE OF ALABAMA  
COUNTY OF ETOWAH

WE THE UNDERSIGNED JOE L. MOORE, PRESIDENT, HENRY C. HOWARD, JR., SECRETARY OF THE JOE L. MOORE & CO. INC. AS OWNERS DO HEREBY RATIFY AND ADOPT THIS PLAT AS BEING TRUE AND CORRECT.

THIS THE 14<sup>TH</sup> DAY OF DECEMBER 1951  
BY: *Joe L. Moore* PRESIDENT  
BY: *Henry C. Howard, Jr.* SECRETARY



MITCHELL PARK  
SCALE: 1"=100'

30 NW COR. NW 1/4 SE 1/4  
SEC. 29 - T. 11 S. - R. 6 E

F-87

STATE OF ALABAMA  
COUNTY OF ETOWAH

I, a Notary Public in and for the State of Alabama, do hereby certify that JOE L. MOORE, JR., whose name is subscribed to and secretary of the JOE L. MOORE & CO. INC. of Etowah County, Alabama, has acknowledged to me on this day, that he is the owner of the contents of the foregoing plat, and that he has voluntarily executed the same for the purpose and as the act of said corporation.

WITNESS MY HAND AND SEAL THIS THE 14<sup>TH</sup> DAY OF DECEMBER 1951.  
*W. H. ...*  
NOTARY PUBLIC  
AT MONTICELLO

NOTE:  
IRON PINS PUT IN AT  
ALL CURVE CORNERS  
IS TO CENTER DATA SHOWN

*W. H. ...*  
11/14/51

THE STATE OF ALABAMA  
COUNTY OF ETOWAH  
I hereby certify that the instrument was filed in my office on the 14<sup>th</sup> day of December 1951, at 11:14 A.M. and was duly recorded on the 14<sup>th</sup> day of December 1951, in Register of Deeds Book 6320, page 6320.

Office of Probate Judge  
11/14/51  
*W. H. ...*  
Acting Judge of Probate, Etowah County, Ala.