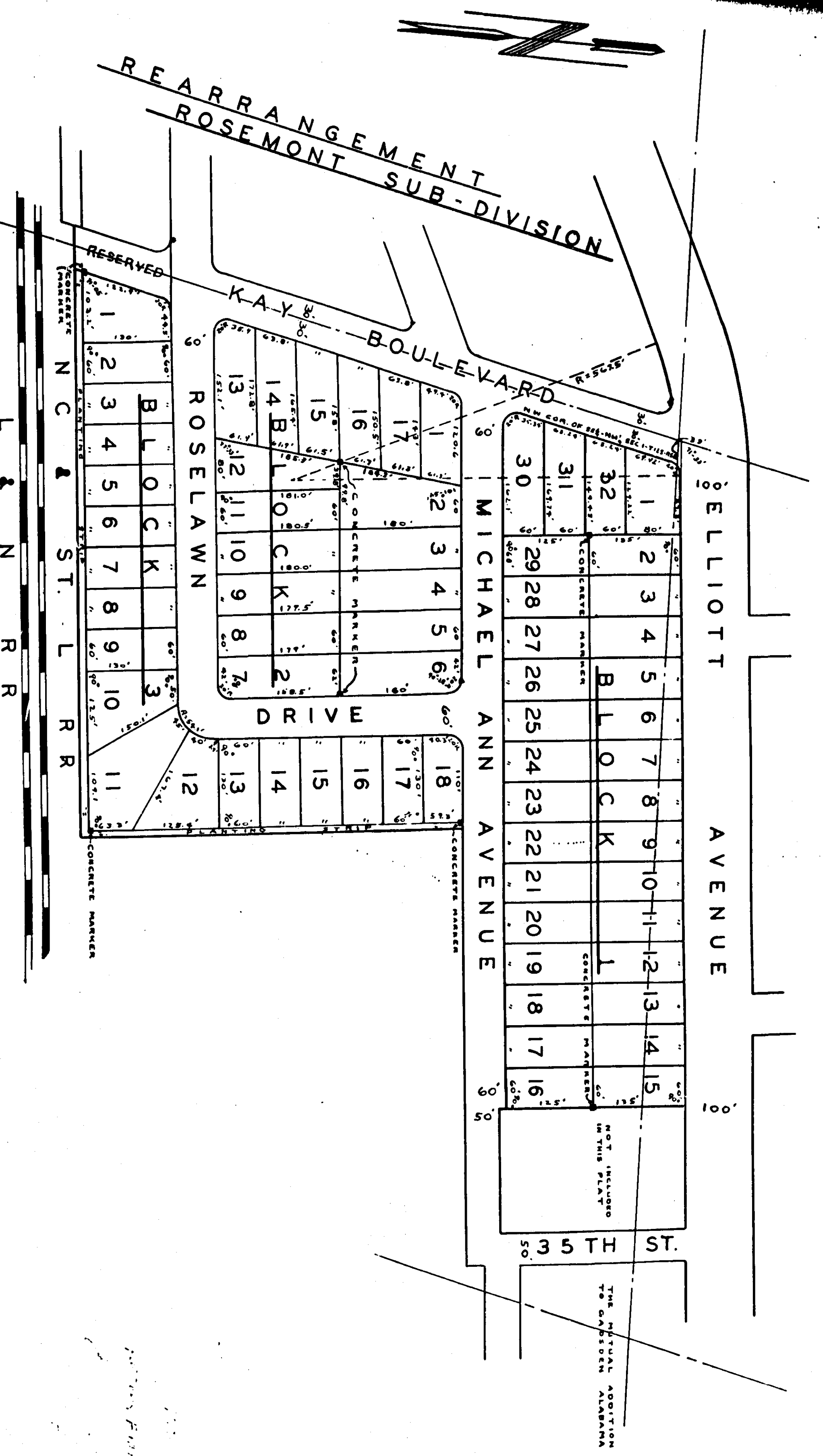


# FOXWOOD ADDITION

RESTRICTIONS - MISS. Z. PAGE 375



LANDS TO BE A TRUE AND CORRECT MAP  
 ENGINEER - SURVEYOR HENRY GEORGE  
 THIS TO BE A TRUE AND CORRECT MAP  
 OF PLAT OF THE LANDS AND CONTECT  
 HEREIN IN A CITY OF BARBARA 1951

SIGNED: Henry George  
 REGISTERED NO. 875

THE UNDERSIGNED, W. C. FOR, OWNER OF THE  
 LAND HEREIN DESCRIBED, HEREBY CERTIFY  
 THAT THE PLAT AND CONTECT HERIN IS  
 A TRUE AND CORRECT PLAT AND CONTECT  
 THIS THE 12 DAY OF JANUARY 1951

SIGNED: W. C. For

STATE OF ALABAMA  
 COUNTY OF STONER  
 I, W. C. For, A NOTARY PUBLIC  
 IN AND FOR SAID STATE AND COUNTY DO  
 HEREBY CERTIFY THAT ON THE DAY  
 APPEARED BEFORE ME W. C. For DESIRING  
 TO HAVE THE LANDS AND CONTECT  
 HEREIN ON THE PLAT AND CONTECT  
 SIGNED BY HIM VOLUNTARILY ON THE DAY THE SAME  
 BEARS DATE.  
 GIVEN UNDER MY HAND AND SEAL THIS THE  
12 DAY OF JANUARY 1951

SIGNED: W. C. For NOTARY PUBLIC

APPROVED  
 GADSDEN PLANNING BOARD  
 DATE: 1/17/51

SIGNED: W. C. For

APPROVED  
 CITY ENGINEER  
 DATE: 1/17/51

SIGNED: W. C. For