

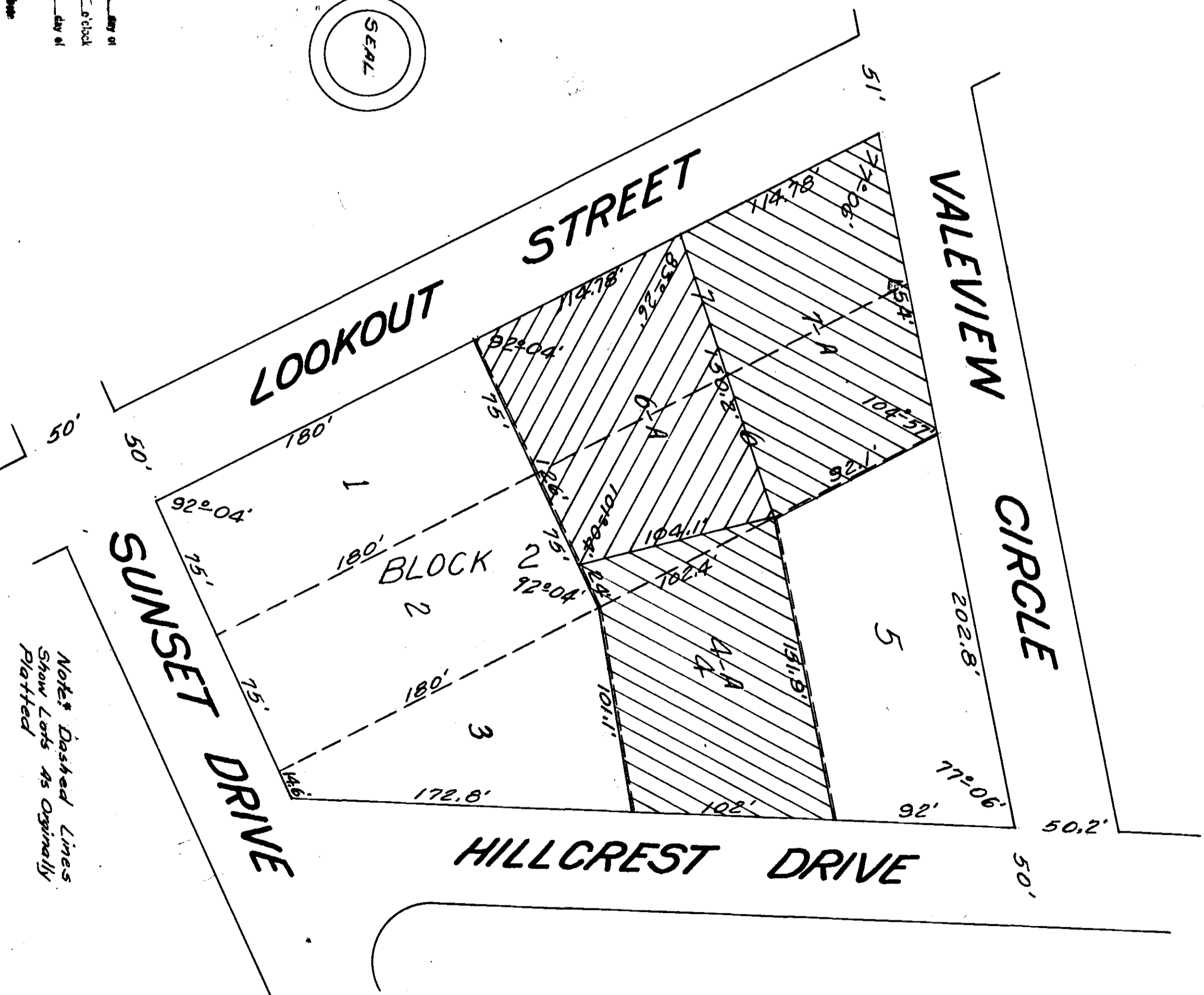
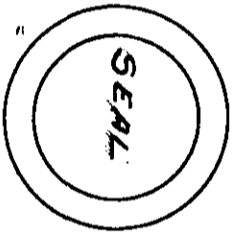
RE-ARRANGEMENT OF LOTS 4, 6 & 7 IN BLOCK 2  
OF THE VALEVIEW SUB-DIVISION

State Of Alabama:  
Etowah County: To All Interested Parties  
I, T.E. Wafford a Registered Engineer -  
Surveyor of Gadsden, Alabama hereby certify  
that I have made an actual survey of the  
lands shown herein and that the same is  
true and correct as shown above on this  
Map or Plat, given under my hand and seal  
this the 18<sup>th</sup> Day of July, 1950.  
Signed: T.E. Wafford C.E.R.L.S.  
T.E. Wafford  
Alabama License No. 29

State Of Alabama  
Etowah County  
We, the undersigned owners of the lands  
herein described do hereby ratify, confirm  
and adopt this Plat as being true and correct.  
Signed: Kaydell Sandlin owner,  
Kay Leth Sandlin  
Signed: May E. Sandlin  
May E. Sandlin.

State Of Alabama  
Etowah County  
I, Mogene W. Brown a Notary Public in and for  
said County and State, do hereby certify that on  
this day appeared before me the above signed  
Owner of the lands herein described, and being  
known to me, acknowledged before me that they  
executed the same voluntarily on the day the  
same bears date, given under my hand and  
seal this 9<sup>th</sup> Day of August, 1950.  
Signed: Mogene W. Brown  
Mogene W. Brown  
Notary Public.

Approved: J. M. Little  
E. M. Pitts Chairman  
Gadsden, Planning Commission  
Approved: W. R. Hooks 7/11/50  
W. R. Hooks, City Engineer  
City of Gadsden, Ala.



Notes: Dashed Lines  
Show Lots as Originally  
Platted

This plat was for record on the 12<sup>th</sup> day of  
August, A. D. 1950 at 2:35 P.M.  
I, M. and duly recorded the 18<sup>th</sup> day of  
August, 1950  
Mogene W. Brown  
Notary Public