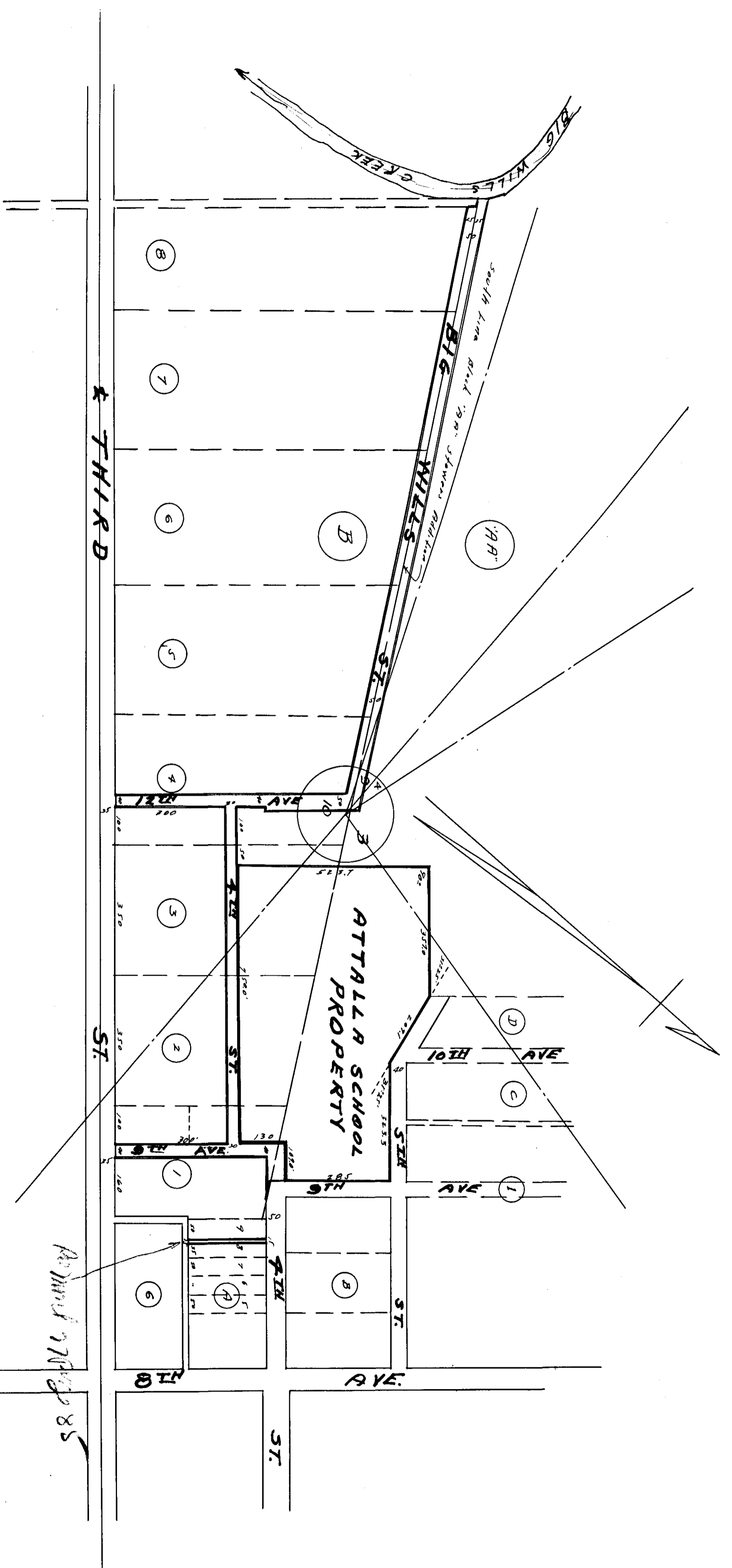


NEW ATALLA SCHOOL PROPERTY
AND DEDICATED STREETS



I, R. B. Bunting, a Registered Engineer and Land Surveyor hereby certify that I have made a survey of the school property and streets shown by this plat and that the survey and plat are true and correct. This the 13th day of August, 1929.

R. B. Bunting Reg. No. 240.

STATE OF ALABAMA:
COUNTY OF ETOWAH:
We the owners of the property, wishing the new Atalla school property to be dedicated, hereby certify, confirm and accept this plat as being true and correct, signed this the 13th day of August, 1929.

R. J. McClain - Jessie McClain.
E. J. Bunk - Ella J. Bunk.

E. J. Bunk - his own.

Robert M. Brown - Lillian Brown.

W. A. Stynes - Dallis Stynes.

W. B. Bunker - Julia Bunker.

J. D. Chandler - Maxine Chandler.

W. H. Tappan - Willa Ann Tappan.

Ferman Brown - Ruby Brown.

STATE OF ALABAMA:
COUNTY OF ETOWAH:
I, C. W. Burke, a Notary Public, in and for said state and county, do hereby certify that R. J. McClain and wife Jessie McClain, E. J. Bunk and wife Ella J. Bunk, Robert M. Brown and wife Lillian Brown, W. A. Stynes and wife Dallis Stynes, W. B. Bunker and wife Julia Bunker, J. D. Chandler and wife Maxine Chandler, W. H. Tappan and wife Willa Ann Tappan, Ferman Brown and wife Ruby Brown, whose names are signed to the foregoing instrument, and who are known to me, acknowledged before me that they signed the contents of, and indorsed, the executed plat, the same voluntarily on the day the same were made, this 13th day of August, 1929.

C. W. Burke
Notary Public.

Filed in office for record on the 20th day of
March, A. D. 1929 at 11:50 A. M.
C. M. and duly recorded the 20th day of
March, 1929.

Frank A. Reagan
Judge of Probate