

MEADOWLAWN No. 1.
 LYING IN THE NW 1/4 SECTION-15 AND THE
 NE 1/4 SECTION-16-TOWNSHIP 12-S-RANGE 5-E.
 ○ INDICATES CONCRETE MONUMENTS

I Homer H. Turner, a Registered Engineer-Surveyor, hereby certify that to be a true and correct map or plat of the property conveyed herein as surveyed by me of or this the 18th day of March 1949.

Signed: Homer H. Turner.
 Registered Engineer No. 879.

We the undersigned owners of the lands herein described do hereby verify, confirm and adopt this plat as being true and correct.

Belle Ferguson.
 Arnie Wray.
 Louis Wray.
 Kenneth E. Shulgan.
 Henry E. Shulgan.

STATE OF ALABAMA:
 COUNTY OF ETOWHA:
 I, Leslie M. Ray, a Notary Public in and for said state and County do hereby certify that on this day appeared before me the above signed owners of the lands herein described and being known to me and being known before me that they executed the same voluntarily on the day the same were signed. Witness my hand and seal this 20th day of March, 1949.

Leslie M. Ray,
 Notary Public.

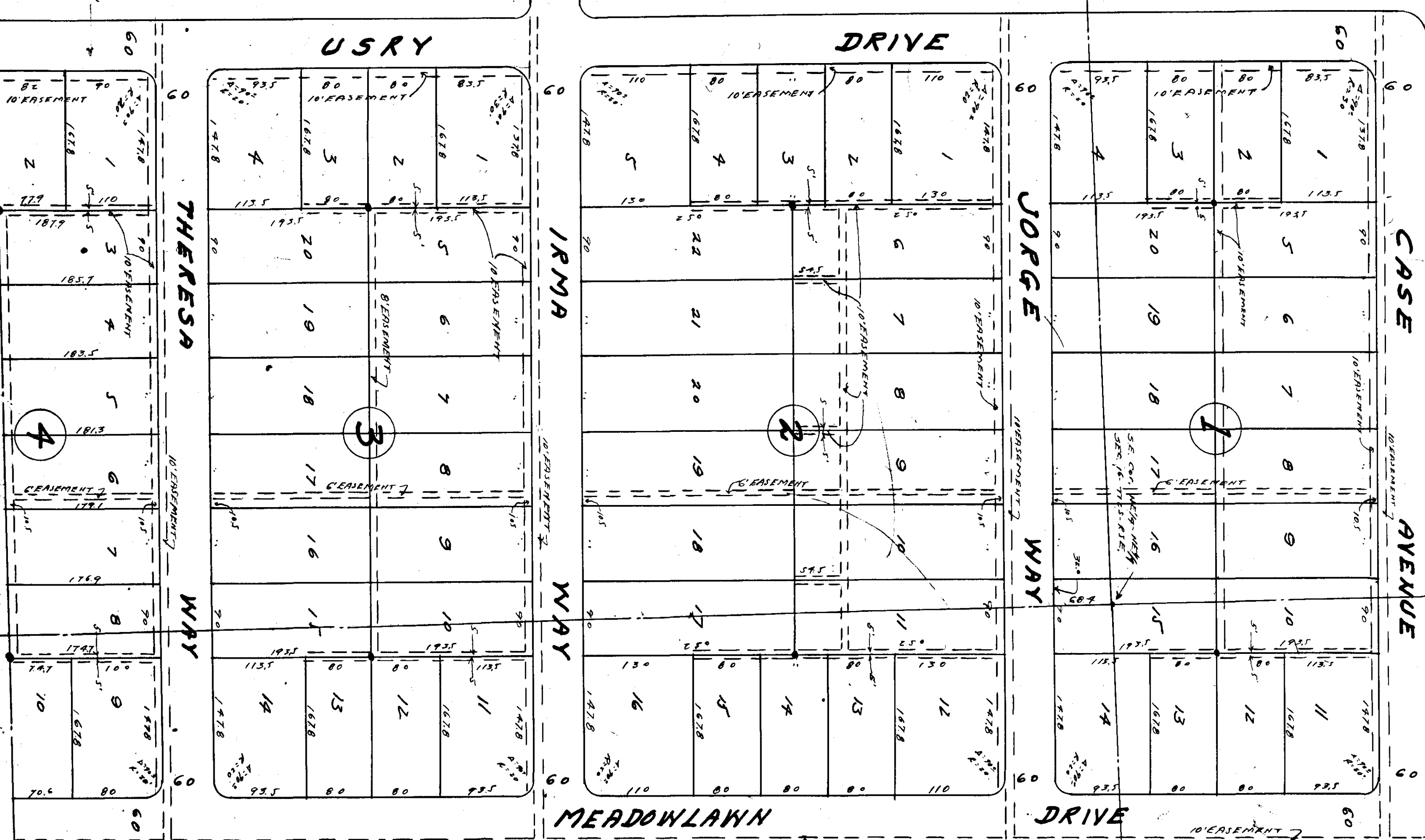
Approved: Grassden Planning Commission
 Date: May 3rd 1957 T. M. Feltch
 Chairman.

Approved: W.P. Hinkle,
 City Engineer.
 Date: May 3, 1957.

FILED IN BOOK FOR RECORD OF MAPS
 May 19 1957 9:14
 P. B. BERRY, COUNTY RECORDS CLERK
 1957
 6th FLOOR
 48
 1957
 1957

Frank A. Rogers

Substitution per mail 20/3/76



See page 213
 for return of plat